



GRANDURA
OUTDOOR & FULLBODY



HARDSTONE

Collection

Inspired by the enduring strength
of **NATURAL STONE**

Hardstone is a collection crafted to deliver lasting performance with timeless appeal. Designed using advanced Full Body technology, the collection reflects durability at its core while maintaining refined aesthetics that complement diverse architectural styles.

Available in versatile sizes of 600x600mm and 600x1200mm, Hardstone offers multiple surface options including Polished, Matt, and Textured carefully selected based on the suitability of each design series. This ensures both visual harmony and functional performance across applications.

Recommended for residential as well as commercial spaces, Hardstone adapts effortlessly to different ambiances, creating environments that are strong in character, balanced in design, and reliable in everyday use.

Strength that shapes every space.

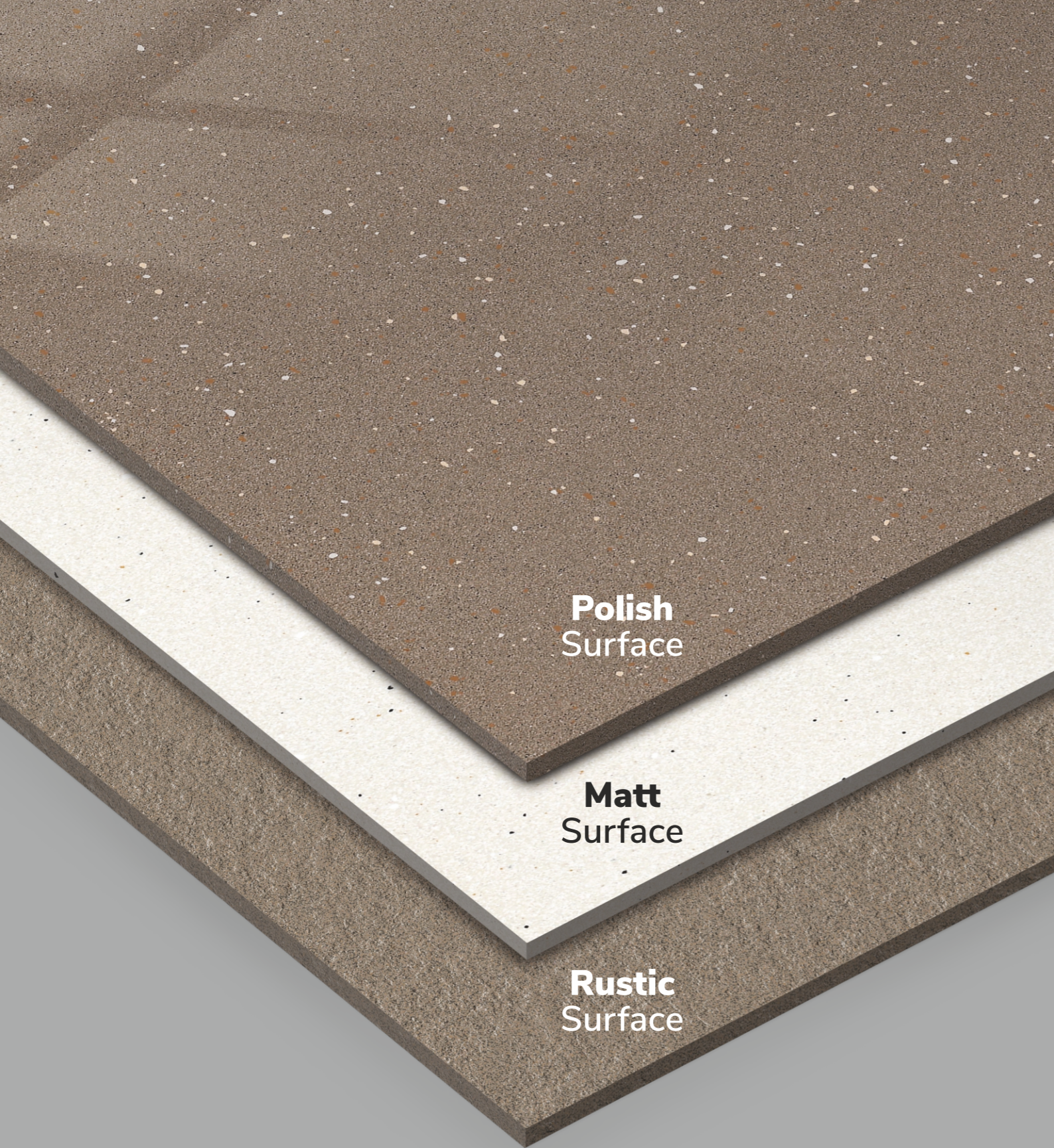
Size: **600x1200mm**

Surface: **Polish | Matt | Rustic**

No. of Series	No. of Designs	No. of Shades	No. of Surface	No. of Sku's
14	05	35	03	76

Designed Exclusive for
'GRANDURA' Segment





**Polish
Surface**

**Matt
Surface**

**Rustic
Surface**

Full Body Vitrified Tiles:

Built with a consistent material composition from surface to core, full body vitrified tiles deliver exceptional strength, durability, and long-lasting performance. Available in polished, matt, and rustic surfaces, they offer design versatility with high resistance, making them ideal for both aesthetic-driven spaces and demanding applications.

APPLICATION AREAS



Residential
(Living Room, Bedroom,
Kitchen)



Indoor Area



Bathroom



Mall Flooring



Offices



Balcony



Commercial Spaces



School & University

WATER RESISTANT

It prevents the absorption of liquids and the accumulation of odours thanks to its low porosity.

STAIN PROTECTION

Hydro and oil repellent antibacterial waterproofing that improves resistance against humidity chemical agents and stains.

**SCRATCH AND
IMPACT RESISTANT**

High tolerance to energy from impacts and cutting tools used on the surface.

FIRE RESISTANT

Fireproof and non-combustible, it maintains its aspect and performance when exposed to high temperatures.

UV RESISTANT

Unalterable by ultraviolet rays, it remains stable against wear and tear due to strong illumination.

EASY TO CLEAN

The use of specific products is unnecessary thanks to the zero-effort care of the material.

ABRASION RESISTANT

High durability and good resistance to wear and tear and scratches from daily use.

FROST RESISTANT

Stable to sudden temperature changes, it withstands extreme cold conditions.



HS Curado Bianco FP (Polish)
HS Curado Bianco MT (Matt)



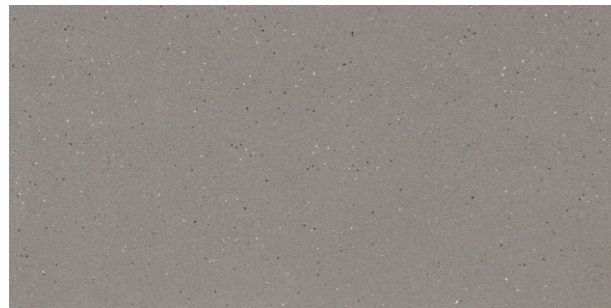
HS Curado Barley FP (Polish)
HS Curado Barley MT (Matt)



FD Ibrida Zicron (Matt)



FD Ibrida Beton (Matt)



HS Curado Grey FP (Polish)
HS Curado Grey MT (Matt)



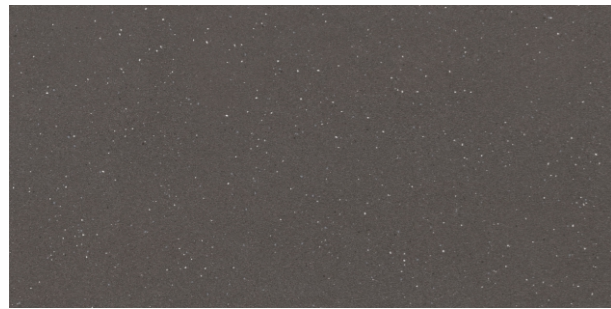
HS Curado Cocoa FP (Polish)
HS Curado Cocoa MT (Matt)



FD Ibrida Silver (Matt)



FD Ibrida Kohle (Matt)



HS Curado Nero FP (Polish)
HS Curado Nero MT (Matt)



FD Ibrida Calce (Matt)



FD Ibrida Toffee (Matt)

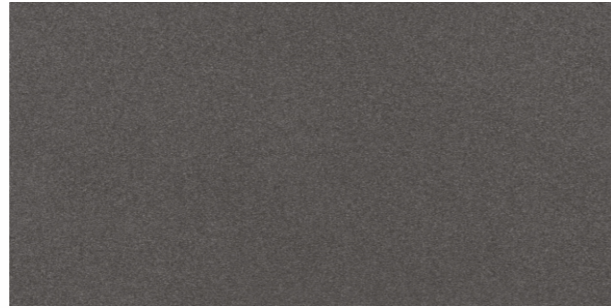


FD Ibrida Menta (Matt)

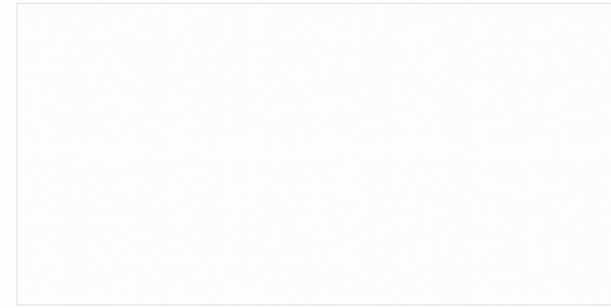




Kota Crystal (Polish)



Nero Crystal (Polish)



Super White Matt



Super White Rustic



Plain Kota (Matt)



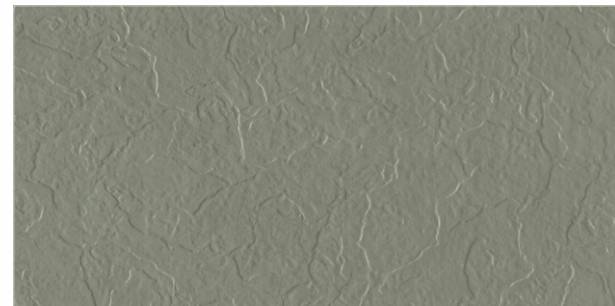
Granure Hard Nero (Matt)



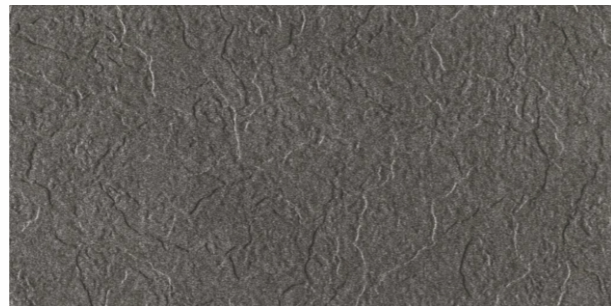
Jet Black Matt



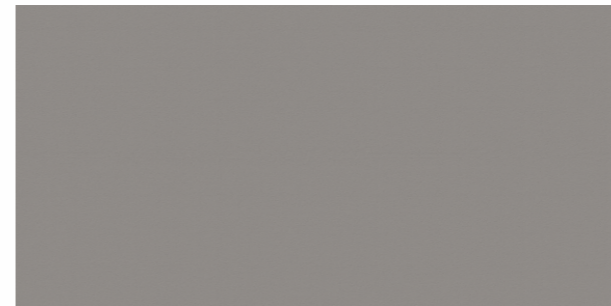
Jet Black Rustic



Kota Rustic



Nero Rustic



Plain Dark Grey (Matt)

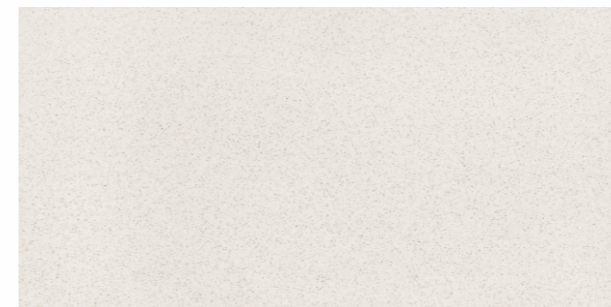


Dark Grey Rustic



Plain Grey (Matt)





Sandune Bianco Crystal (Polish)
 Sandune Bianco (Matt)



Crema Crystal (Polish)
 Granure Hard Crema (Matt)



Granure Hard Mocha (Matt)



Granure Hard Brown (Matt)



Granure Hard Dove Grey (Matt)

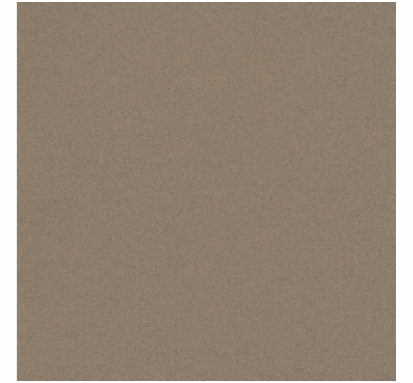




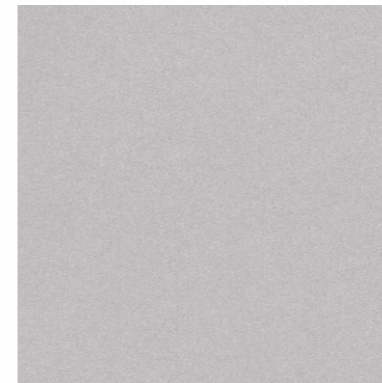
Sandune Bianco Crystal
(Polish)



Crema Crystal
(Polish)



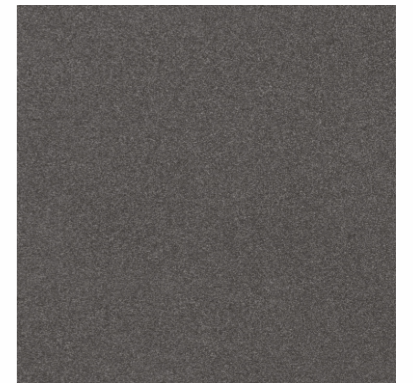
Brown Crystal
(Polish)



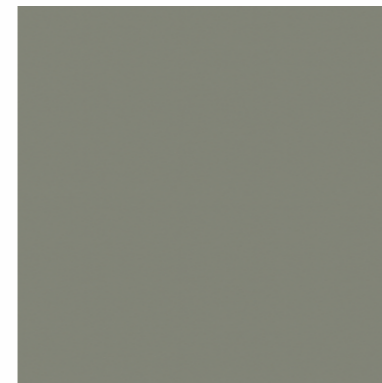
Dove Grey Crystal
(Polish)



Mocha Crystal
(Polish)



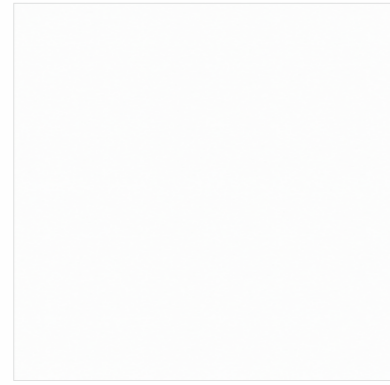
Nero Crystal
(Polish)



Kota Crystal
(Polish)



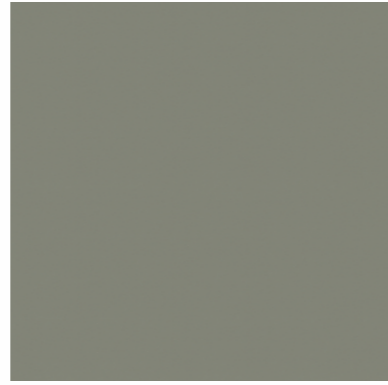
Mocha Crystal (Polish)



Super White Matt



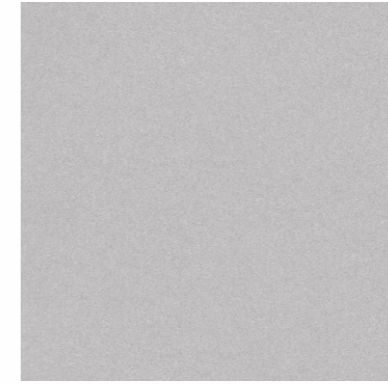
Plain Grey (Matt)



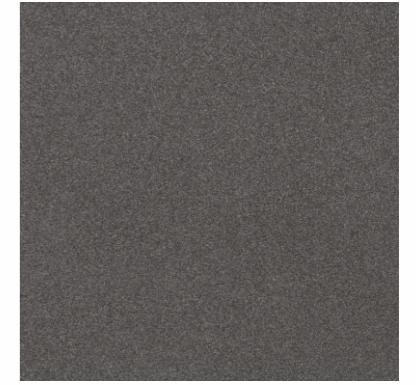
Plain Kota (Matt)



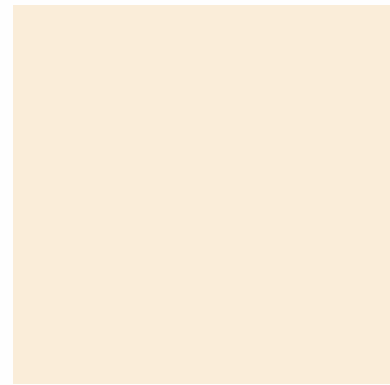
Granure Hard Crudo
(Matt)



Granure Hard Dove Grey
(Matt)



Granure Hard Nero
(Matt)



Plain Crema (Matt)



Plain Dark Grey (Matt)



Jet Black Matt



Granure Hard Mocha
(Matt)



Granure Hard Crema
(Matt)



Granure Hard Choco
(Matt)



Sandune Bianco (Matt)



Granure Hard Grey
(Matt)



Granure Hard Brown
(Matt)





Crema Rustic



Brown Rustic



Hard Grey Rustic



Granure Hard Blanco
(Matt)



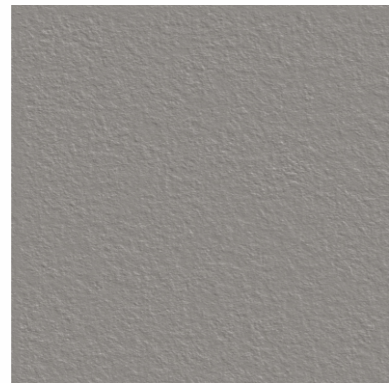
Granure Hard Beige
(Matt)



Granure Hard Buff
(Matt)



Dove Grey Rustic



Dark Grey Rustic



Nero Rustic



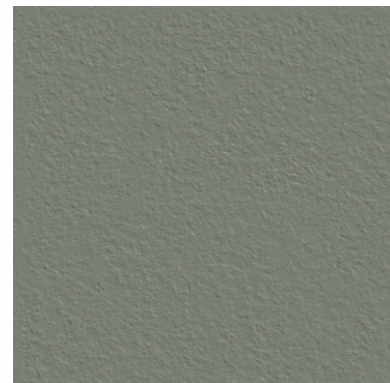
Granure Hard Blanco
Rustico (Rustic)



Granure Hard Beige
Rustico (Rustic)



Granure Hard Buff
Rustico (Rustic)



Kota Rustic



Granure Hard Nero
(Matt)



Granure Hard Choco
(Matt)

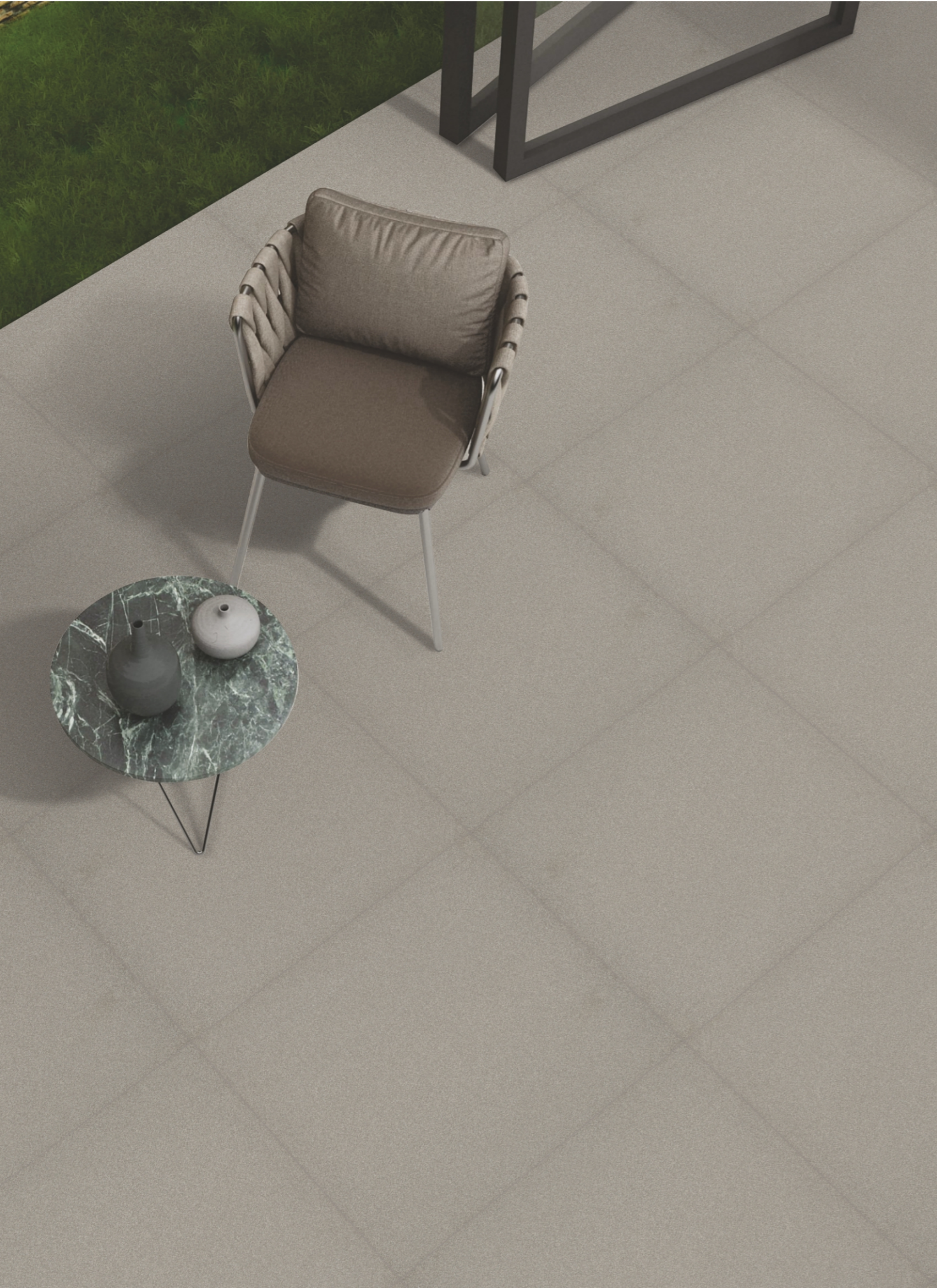


Granure Hard Nero
Rustico (Rustic)



Granure Hard Choco
Rustico (Rustic)





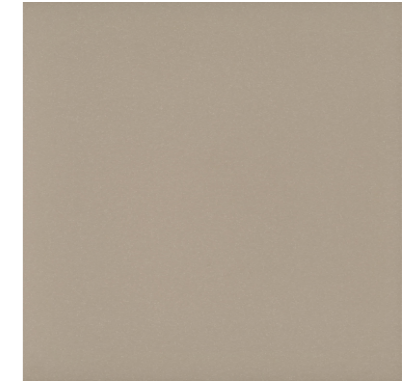
600x
600mm



FT Dessert
(Matt)



FT Choco
(Matt)



FT Soil
(Matt)



FT Earth
(Matt)



FT Olive
(Matt)



FT Lava
(Matt)



FT Carban
(Matt)



HIGH DEPTH Elevation

Inspired by the enduring strength of High Depth Punch Texture Tiles

Designed in a 300x600 mm format with a robust 9 mm thickness, Matt Elevation tiles feature a high-depth punch texture that creates a striking three-dimensional effect. Built for heavy-duty applications, these tiles combine strength with visual impact, ensuring long-lasting performance in demanding environments.

Crafted to complement thematic designs, they enhance exterior wall areas of both commercial and residential spaces. With a natural stone-inspired look and textured finish, they add character, depth, and architectural distinction to any facade or feature wall.

Size: **300x600mm**
Surface: **Matt Elevation**

No. of Designs	No. of Sku's
11	12

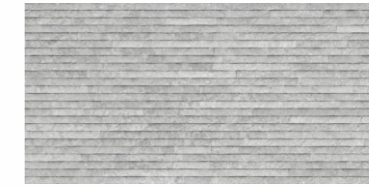
Designed Exclusive for
'GRESTEK' Segment

300x
600mm

HighDepth
Elevation



Extero Gris (Matt)



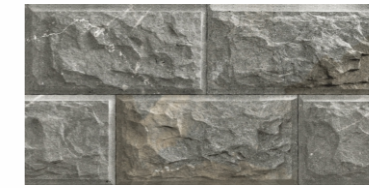
Rapid Gris (Matt)



Rapid Slate (Matt)



Brixen Stone (Matt)



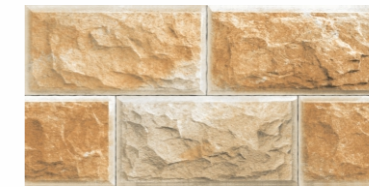
Corinto Gris (Matt)



Louis Slate (Matt)



Extero Beige (Matt)



Corinto Beige (Matt)



Louis Brown (Matt)



Espatra Marfil (Matt)



Edge Slate (Matt)



Delfos Roja (Matt)



GRANDURA

Collection

Strength that **DEFINES GRANDEUR**

Grandura is a resilient tile collection engineered for spaces that demand robust performance whether exterior or interior. Built with strength and sturdiness at its core, the collection delivers dependable durability without compromising on refined aesthetics.

Designed to add grandeur and resilience to demanding environments, Grandura features surfaces enriched with visual depth and class-apart characteristics. It balances practical performance with a strong, confident presence that enhances both functional and architectural spaces.

Available in versatile formats of 400×400mm with a thickness of 12mm, 300×300mm with a thickness of 9mm, and a special Full Body edition in 300×300 mm with a robust 9mm thickness, Grandura is crafted to meet diverse performance and design requirements.

Size: **400x400mm** | **300x300mm**

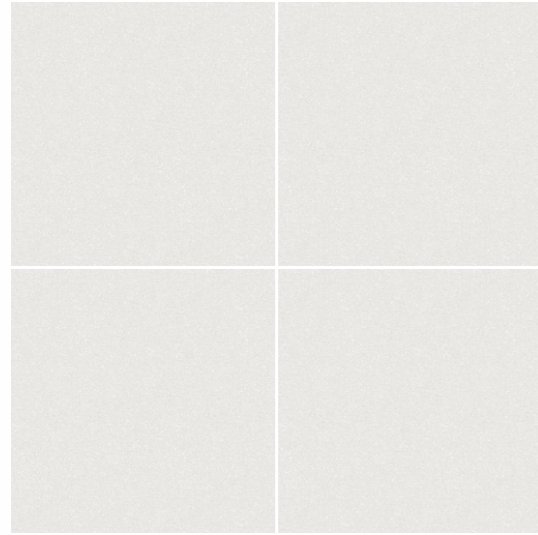
Surface: **Matt** | **Rustic Punch** | **Texture**

No. of Series	No. of Designs	No. of Surface	No. of Sku's
45	63	02	118

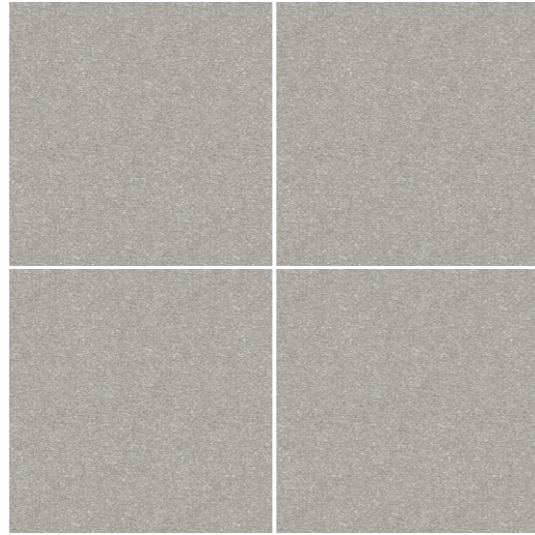
Designed Exclusive for
'GRANDURA' Segment

GRANDURA
OUTDOOR & FULLBODY

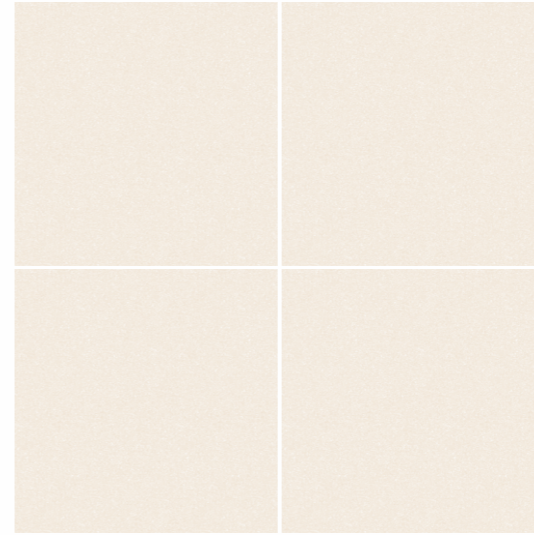




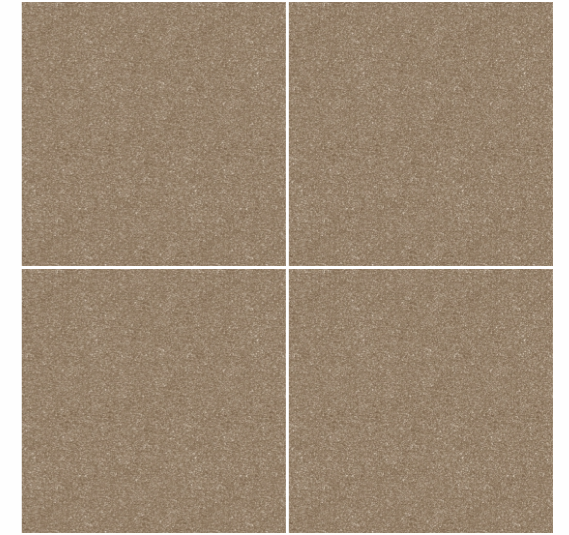
Nuluxe Gris



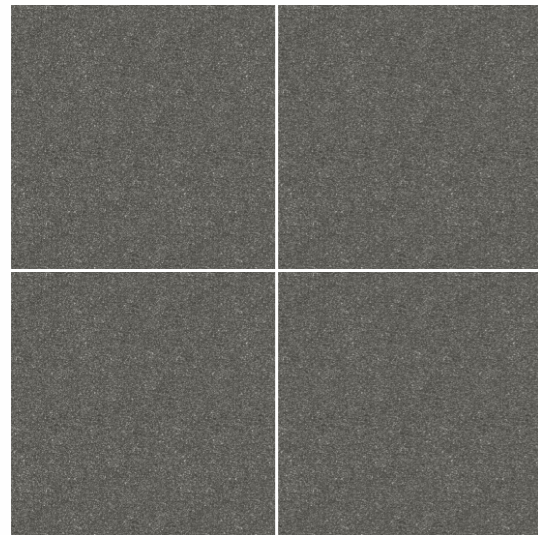
Nuluxe Grey



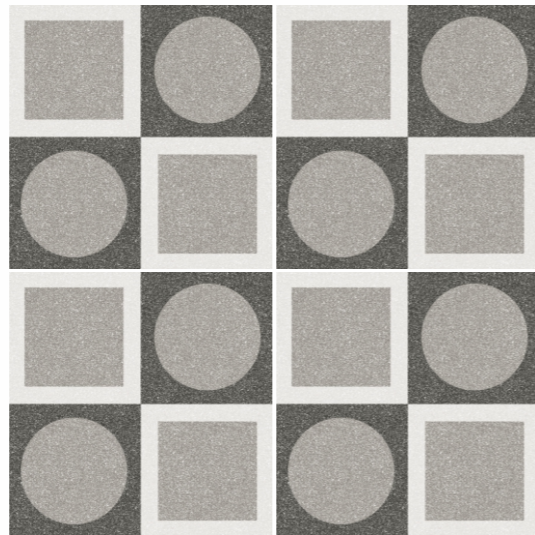
Nuluxe Crema



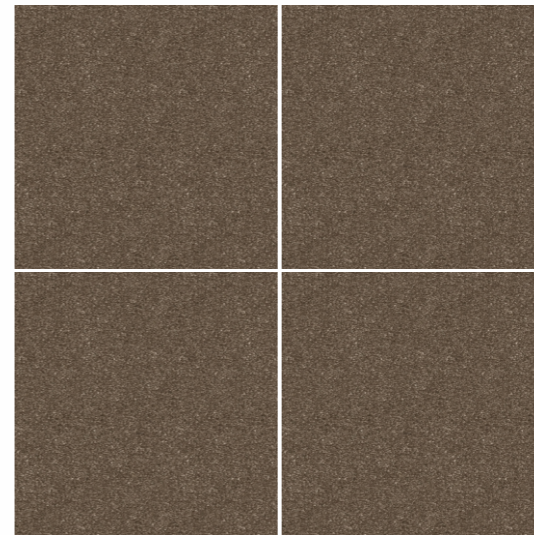
Nuluxe Beige



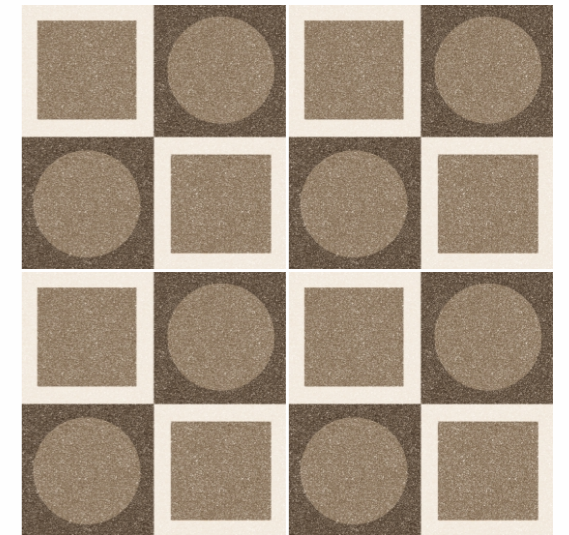
Nuluxe Grigio



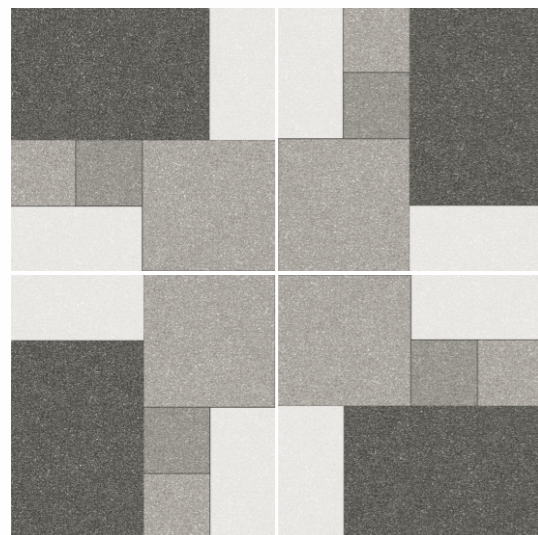
Nuluxe Grigio Decor



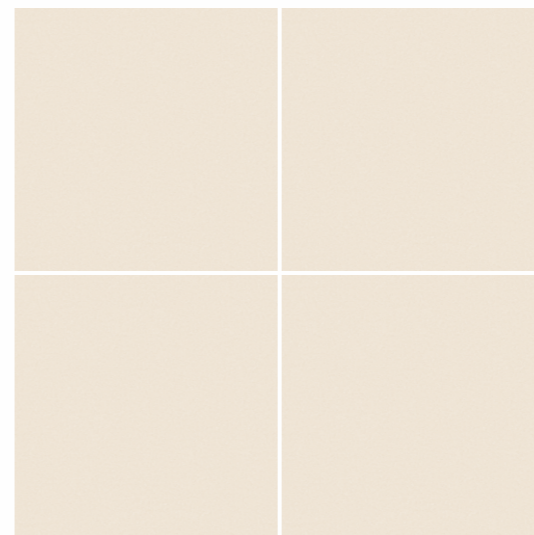
Nuluxe Brown



Nuluxe Beige Decor



Nuluxe Gris Decor

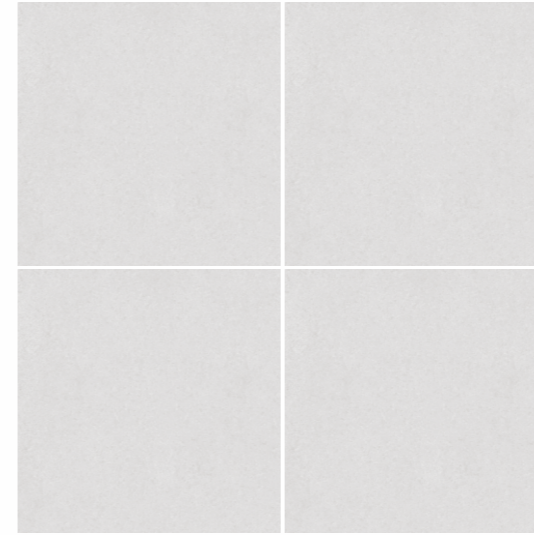


Novart Beige

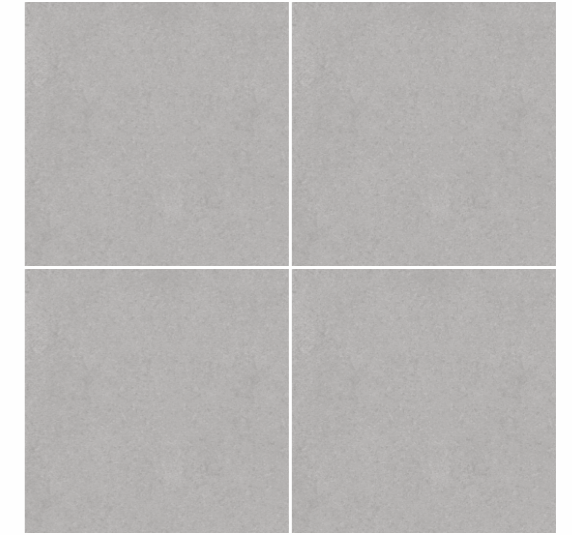


Novart Color Decor

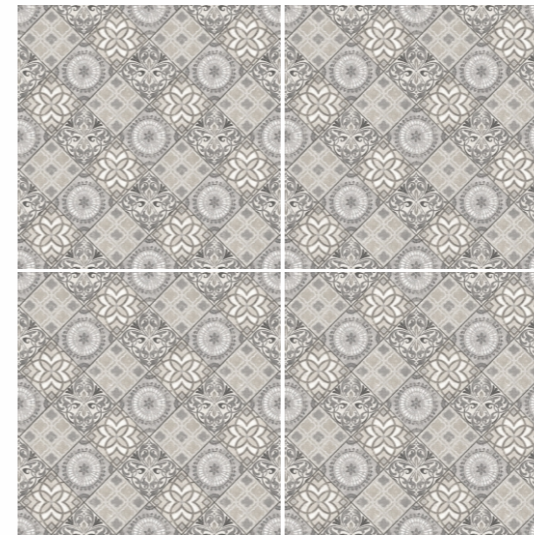




Novart Gris



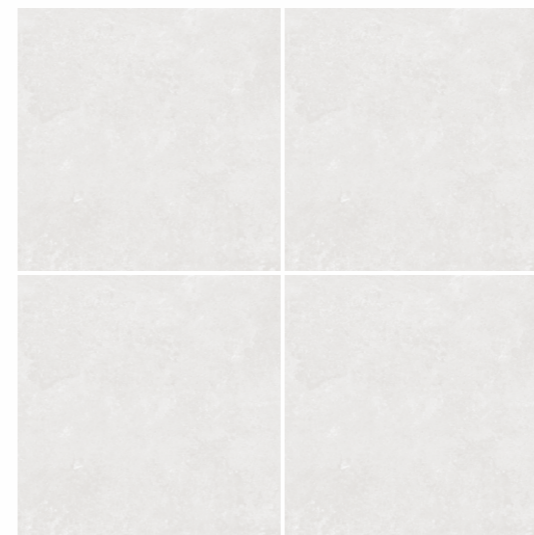
Novart Grey



Olympia Arte



Novart Grigio Decor



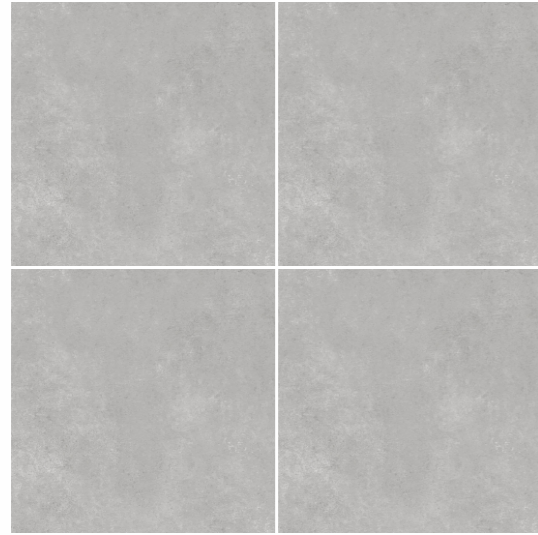
Olympia Gris



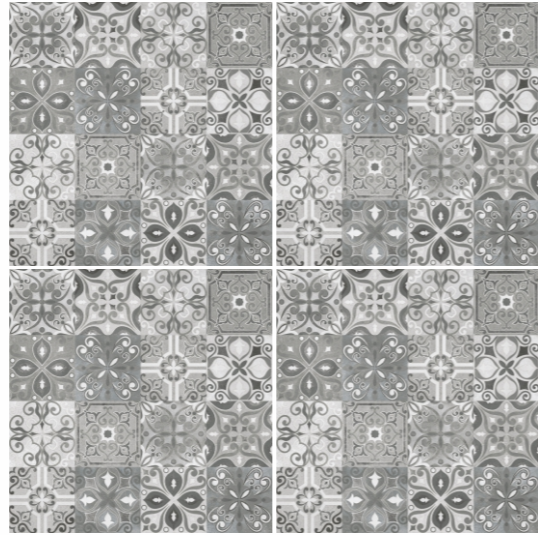
Olympia Grigio



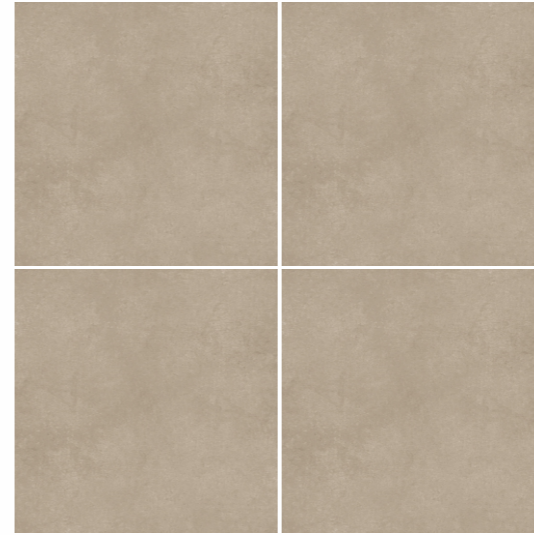
Novart Grey
 Novart Grigio Decor



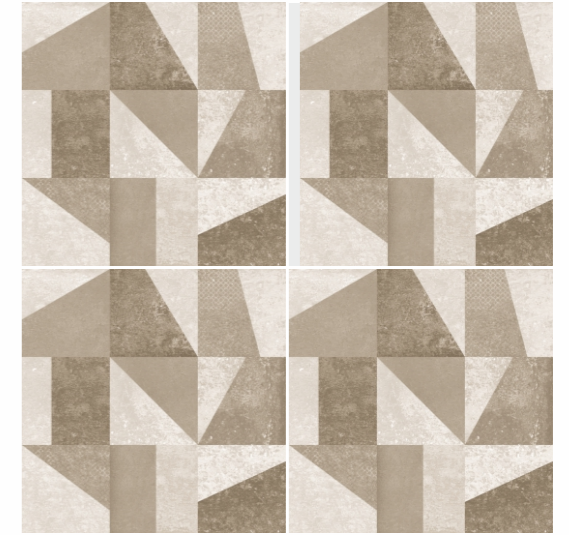
Velvete Grigio



Velvete Grigio Decor



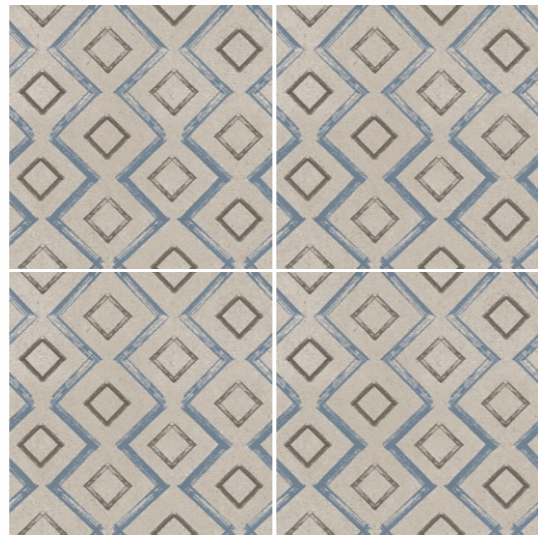
Destreza Choco



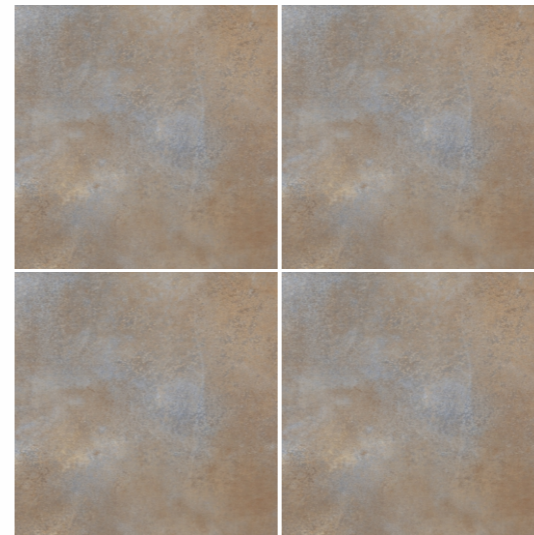
Destreza Choco Decor



Foglia Mushroom (Texture)
 Random 04



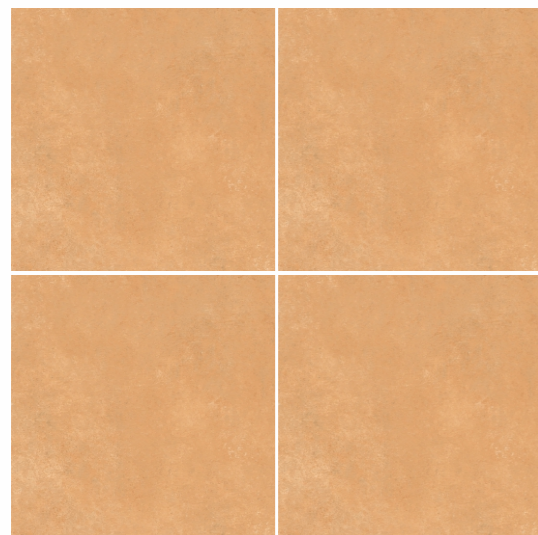
Foglia Mushroom Decor (Texture)



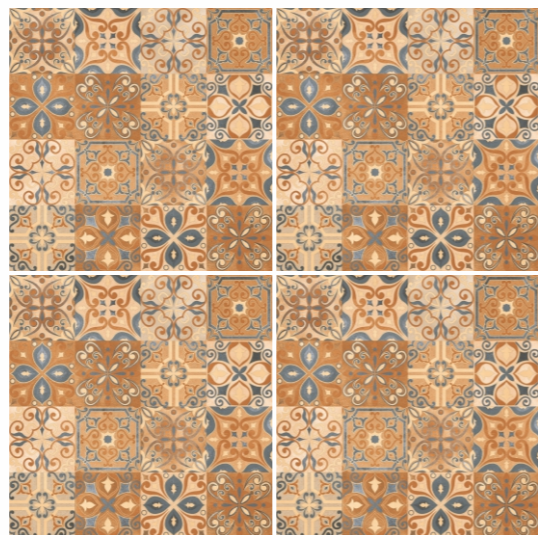
Albert Stone (Texture)



Albert Decor (Texture)



Velvete Brown



Velvete Brown Decor

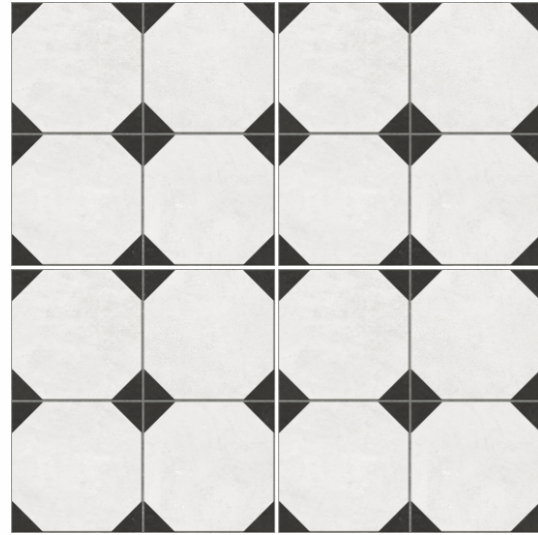


Roost Stone (Texture)

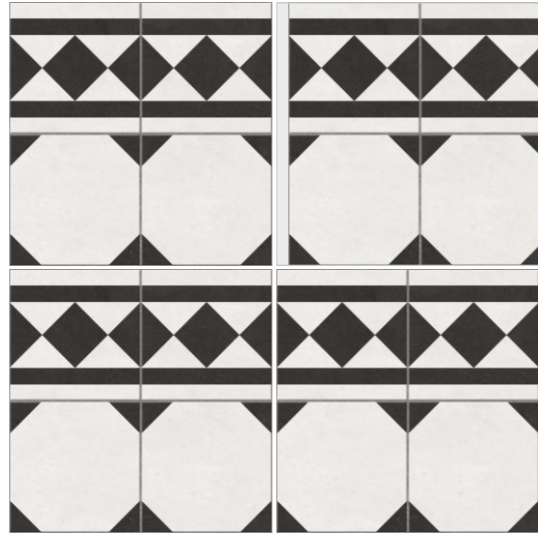


Roost Decor (Texture)

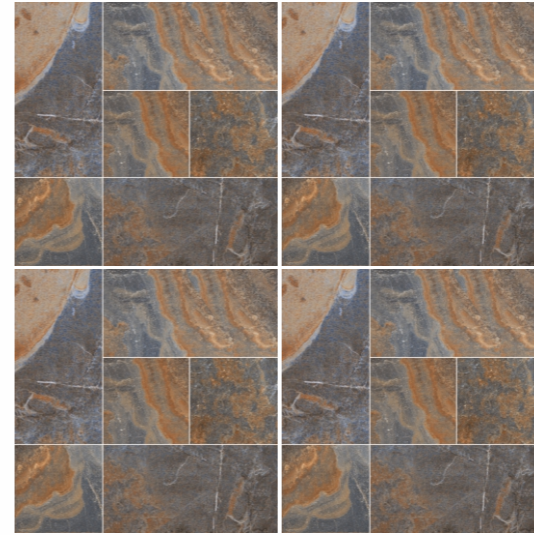




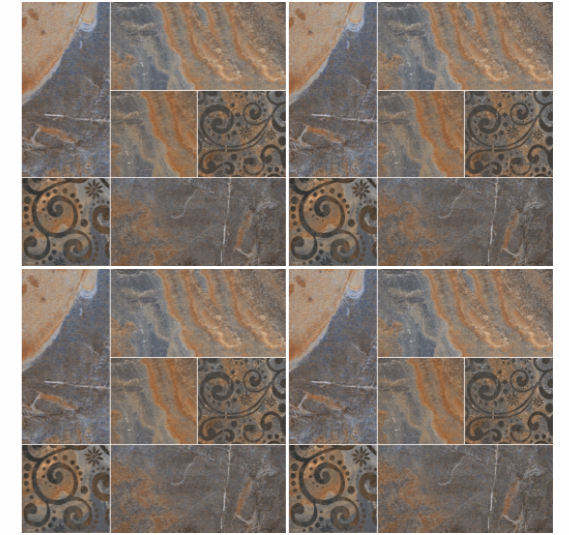
Hexarte Nero



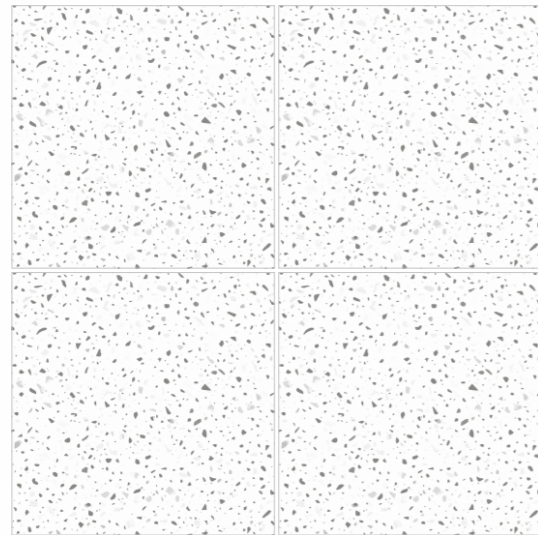
Hexarte Nero Decor-1



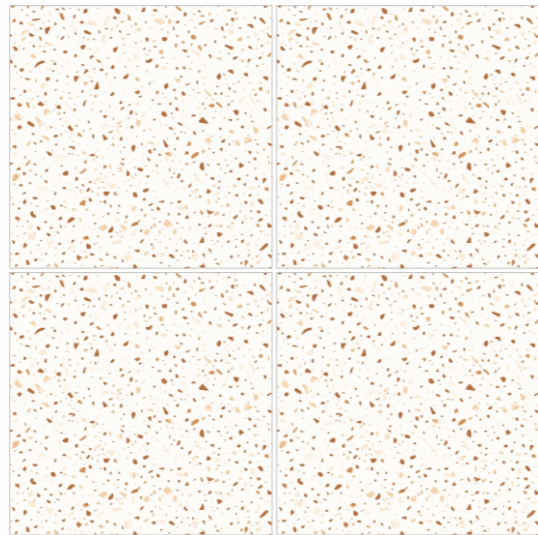
Benzil Stone (Texture)



Benzil Decor (Texture)



Terrazon Bianco



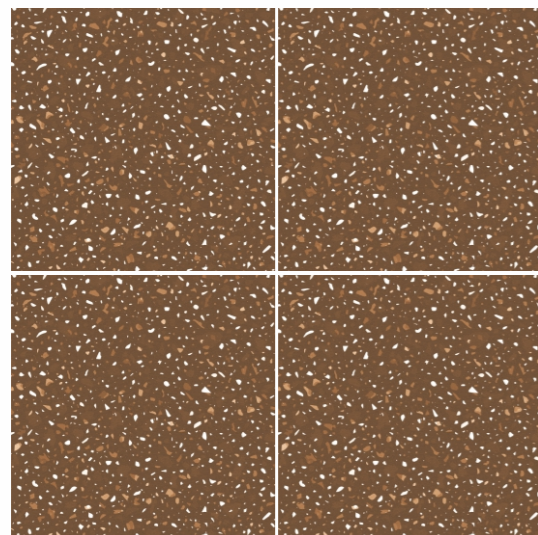
Terrazon Beige



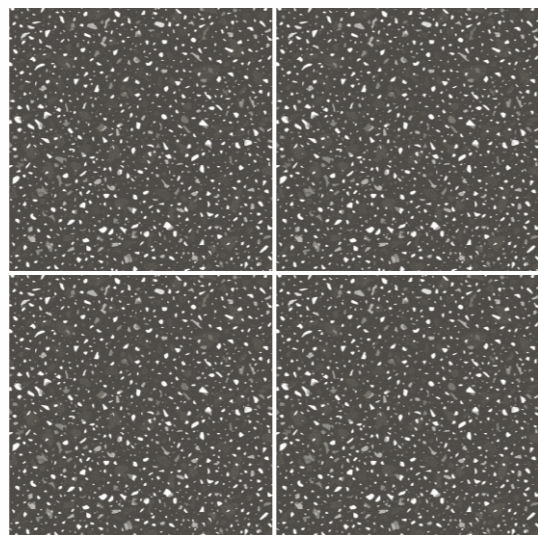
Brickso Slate (Texture)



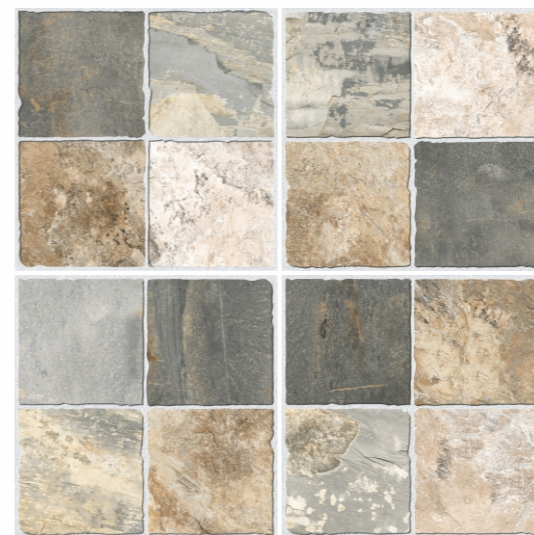
Brickso Stone (Texture)



Terrazon Brown



Terrazon Nero

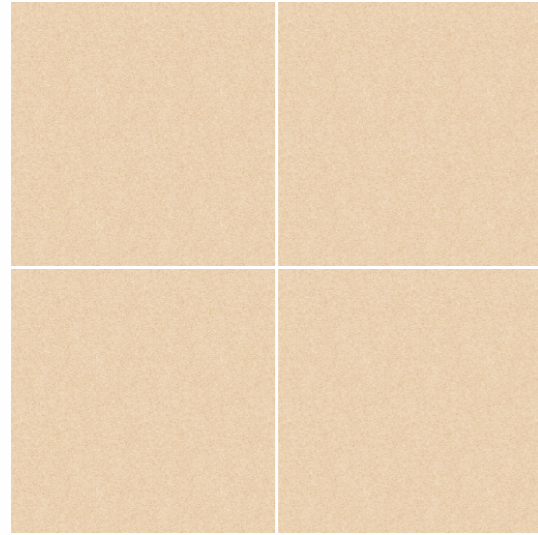


Ultra Slate (Texture)
 Random 08

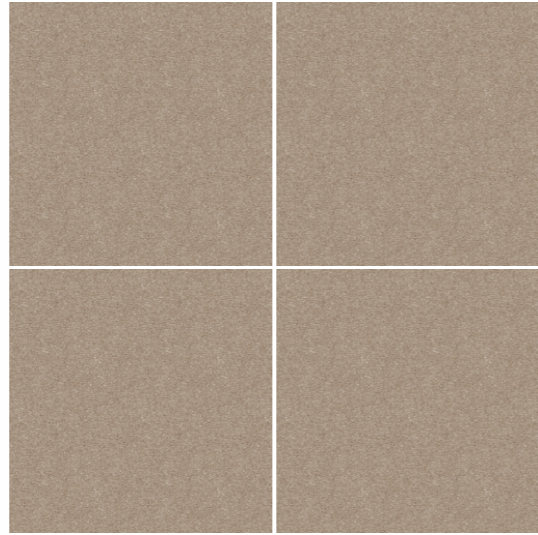


Brickso Brown (Texture)





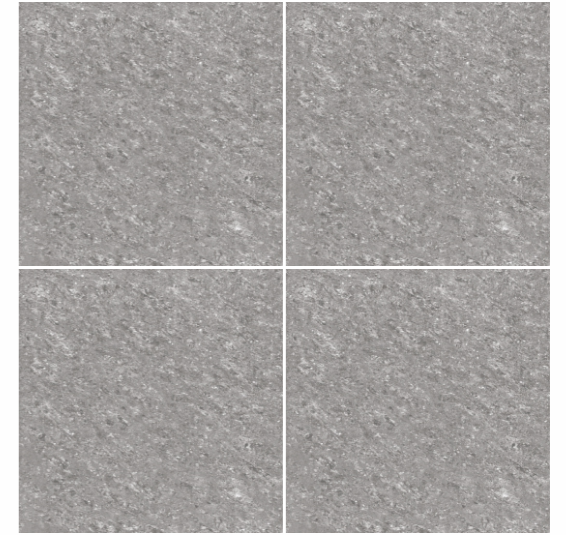
Gripstone Beige



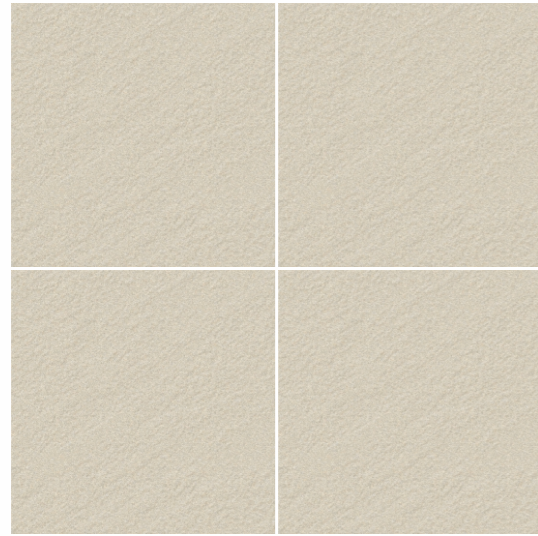
Gripstone Bruno



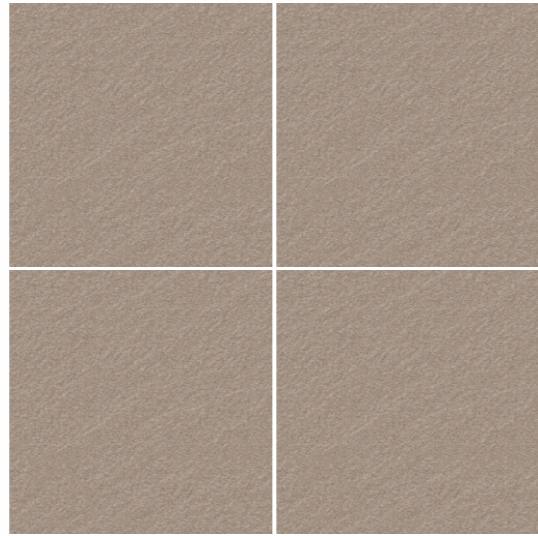
Kyoro Gris



Kyoro Grigio



Derio Beige (Texture)



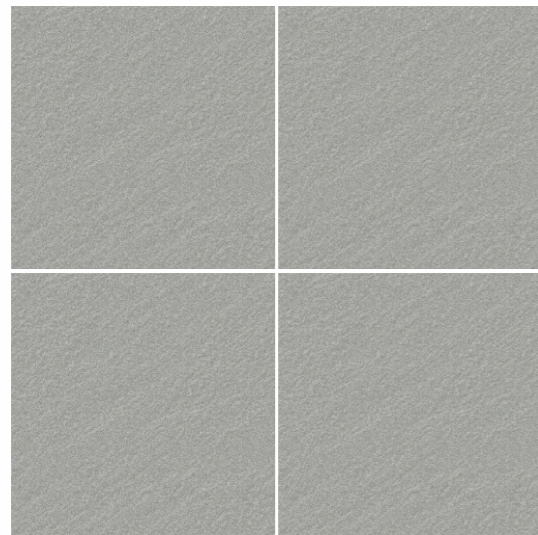
Derio Brown (texture)



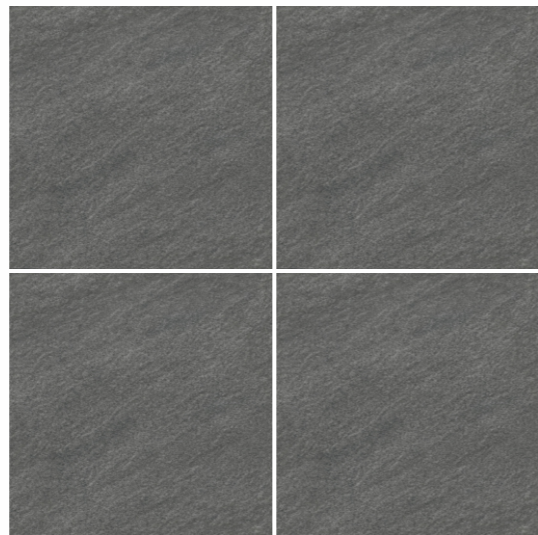
Eslato Beige



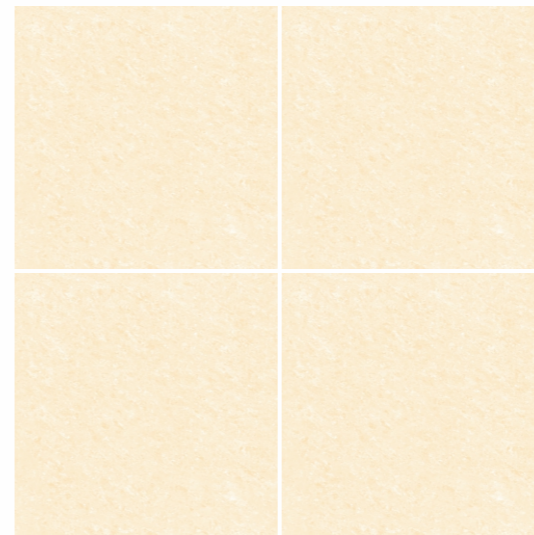
Eslato Brown



Derio Charcole (Texture)



Derio Nero (Texture)



Kyoro Beige

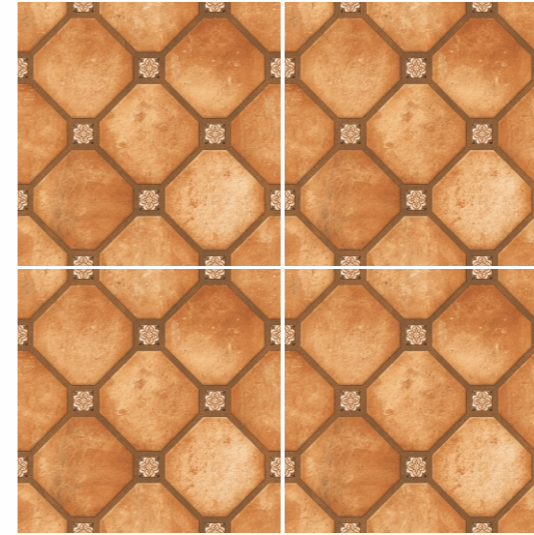


Kyoro Brown





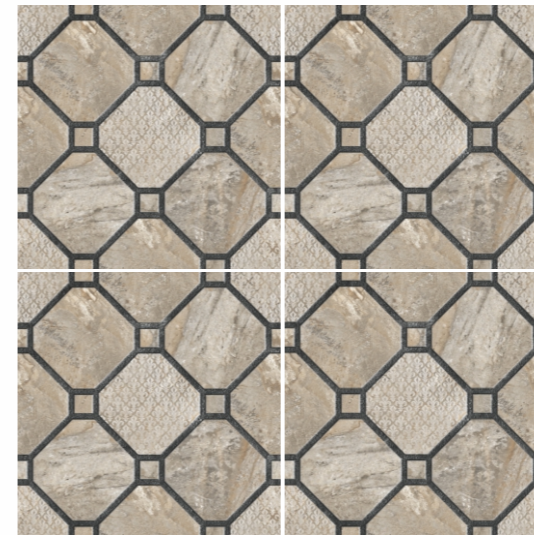
Timwood Brown



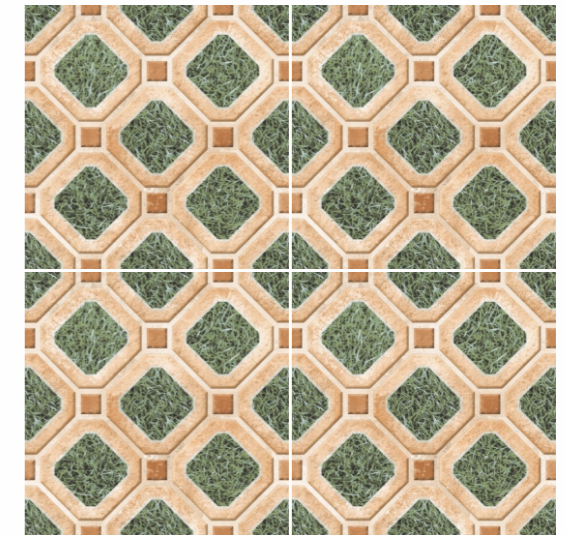
Armanio Brown (Texture)



Armanio Shine (Texture)



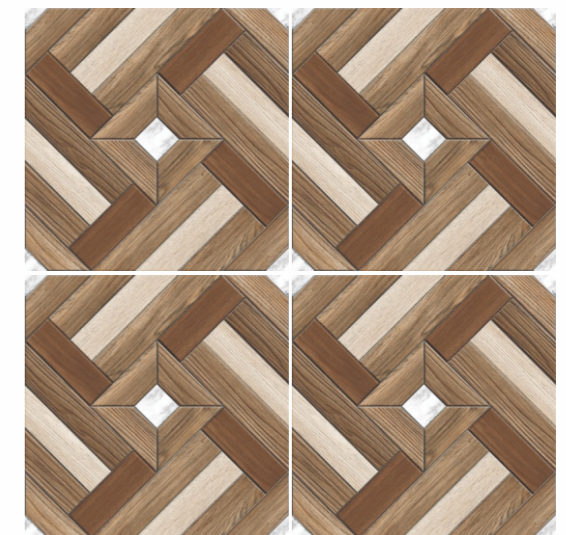
Eminem Stona (Texture)



Anchore Grass (Texture)



Timwood Brown (Texture)

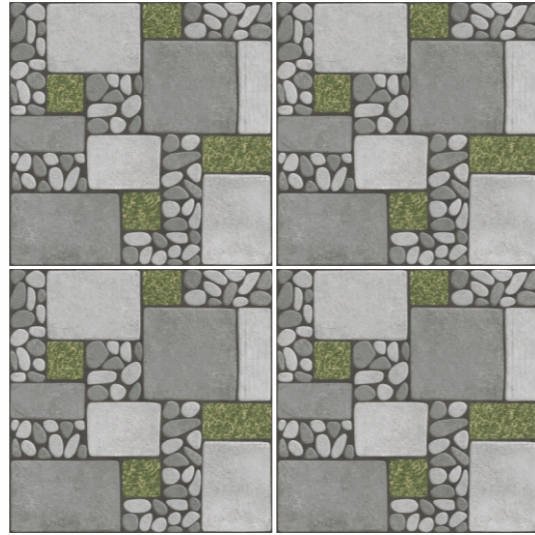


Stripeo Mahagony (Texture)

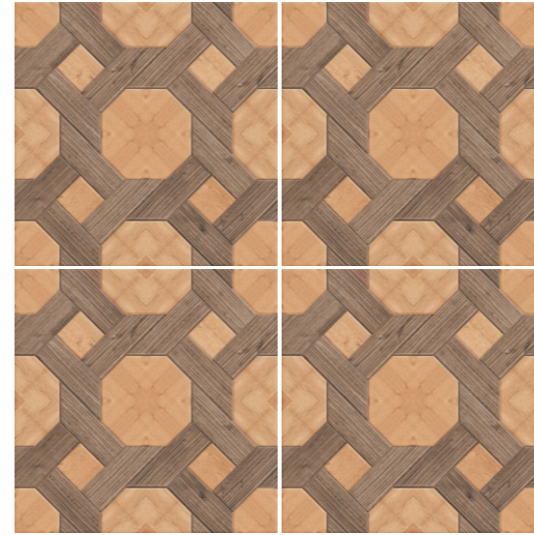




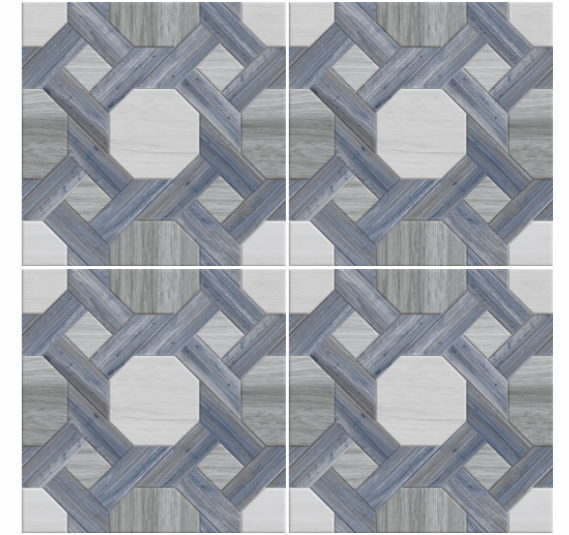
Pebblew Stona (Texture)



Pebblew Grigio (Texture)



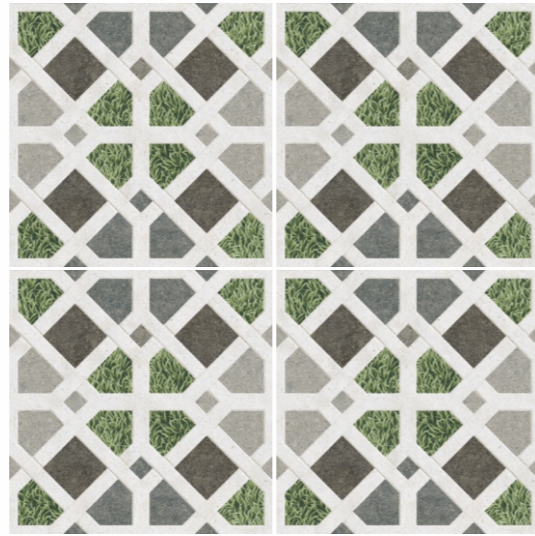
Woodby Brown (Texture)



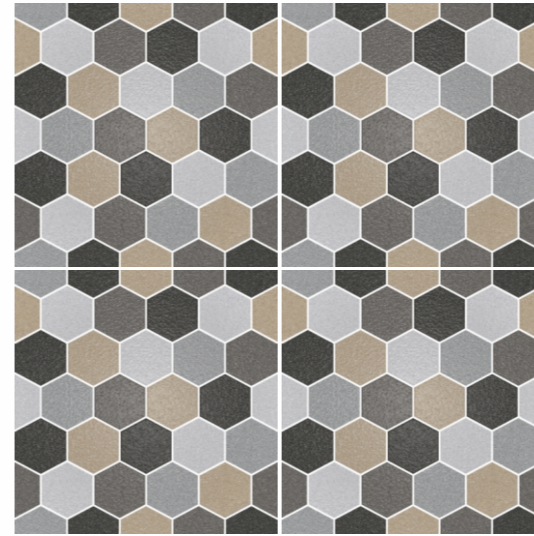
Woodby Blue (Texture)



Pebblew Slate (Texture)



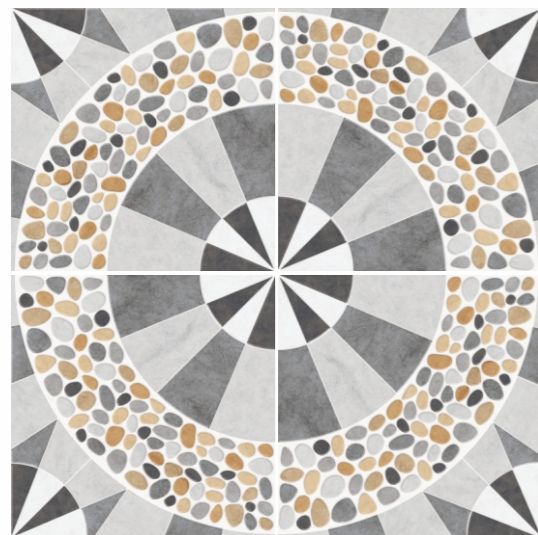
Anchore Gris



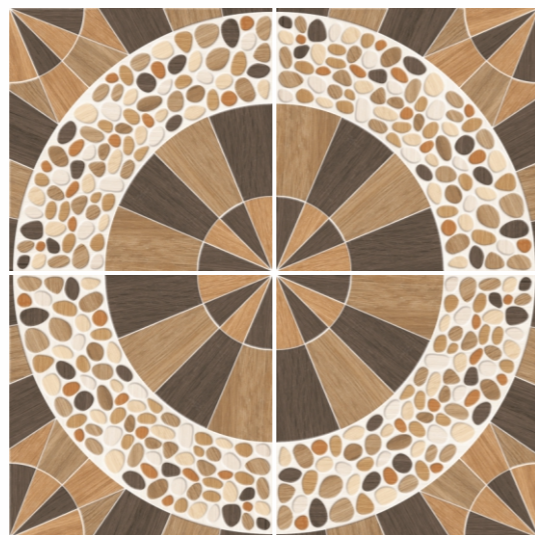
Bathwalk Fusion (Texture)



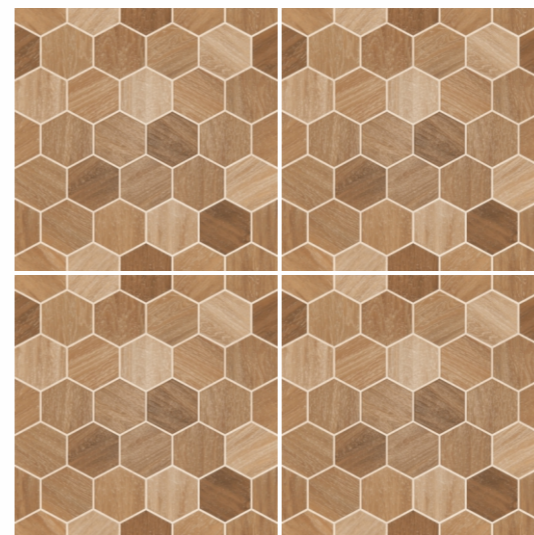
Bathwalk Rusty (Texture)



Pebblon Gris



Pebblon Brown



Bathwalk Wood (Texture)

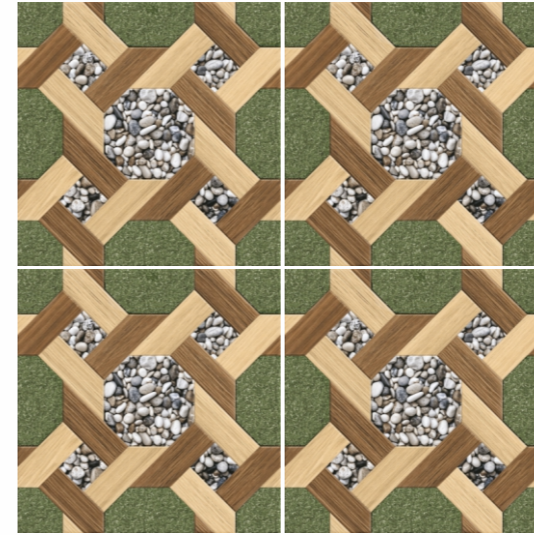


Rustyze Fusion (Texture)

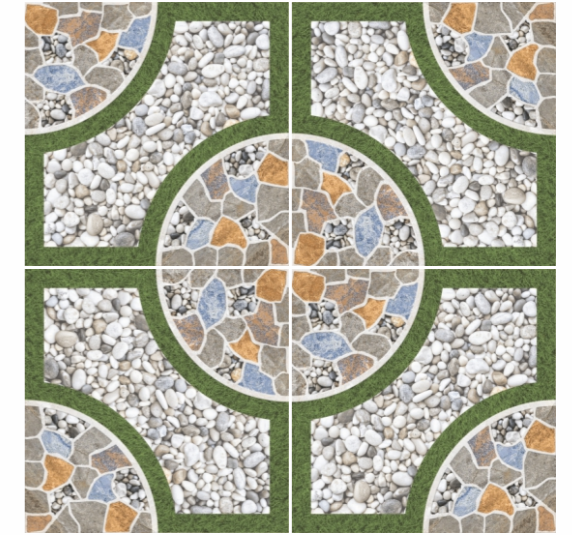




Turftile Sandstone



Turftile Wood (Texture)



Turftile Stones (Texture)



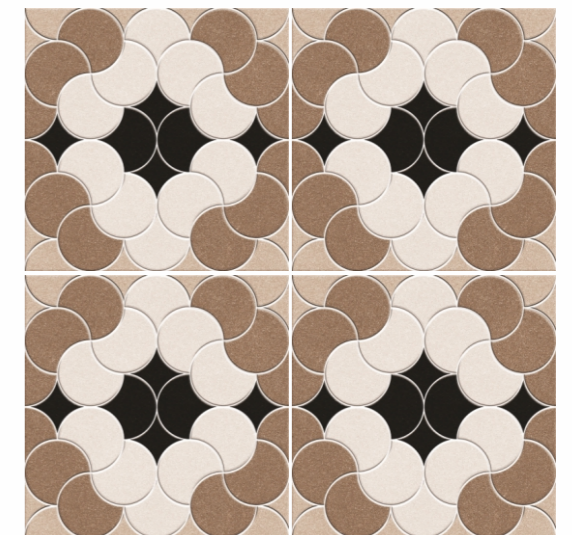
Turftile Sandstone (Texture)



Tijolos Grass (Texture)



Centrio Orange

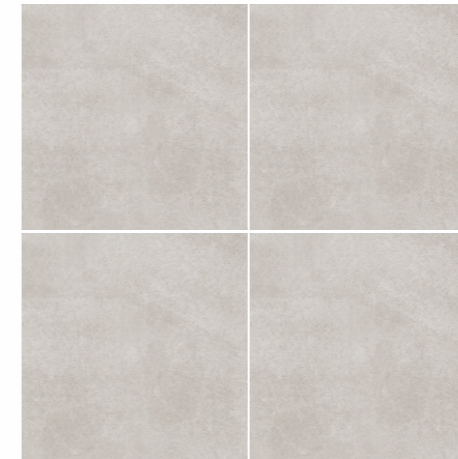


Arcave Brown (Texture)

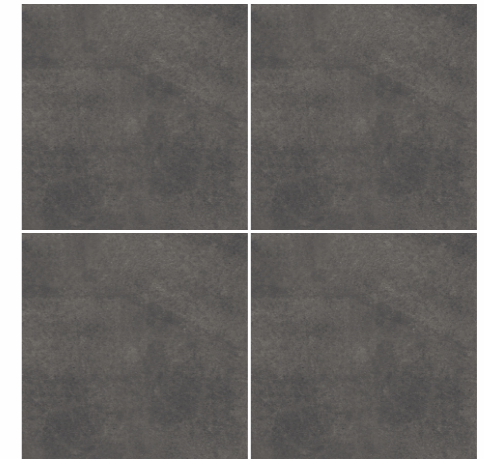




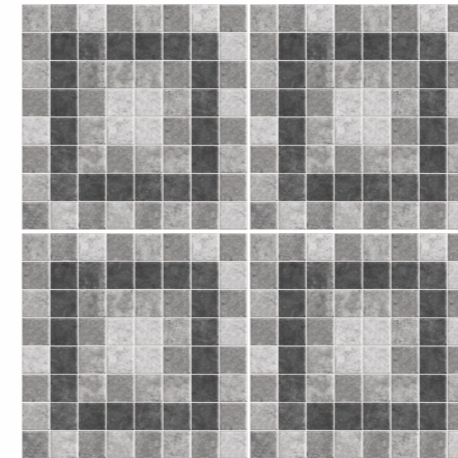
Mosaic Earth Plus



Bonito Light Plus



Bonito Dark Plus



Mosaic Earth Plus (Texture)



Holz Slate Plus (Texture)



Rockscape Grey Plus (Texture)

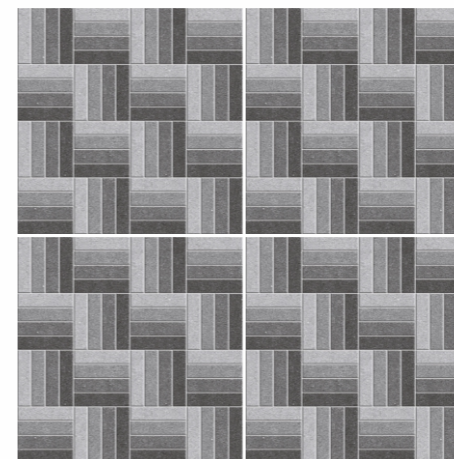


Rockscape Brown Plus (Texture)





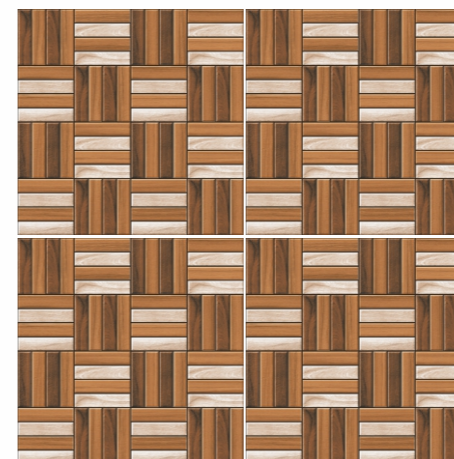
Classy Grey Plus



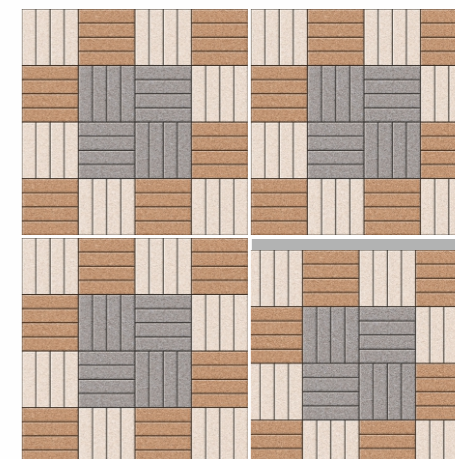
Classy Grey Plus (Texture)



Classy Blush Plus (Texture)



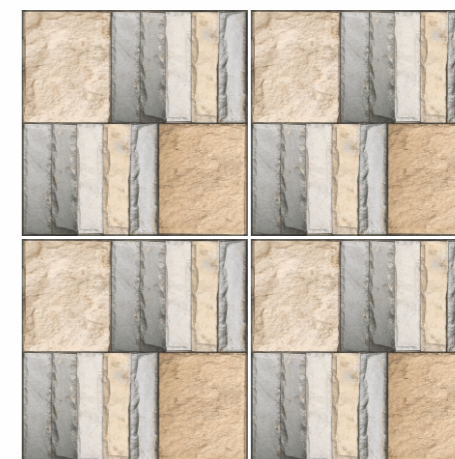
Classy Wood Plus (Texture)



Classy Sand Plus (Texture)

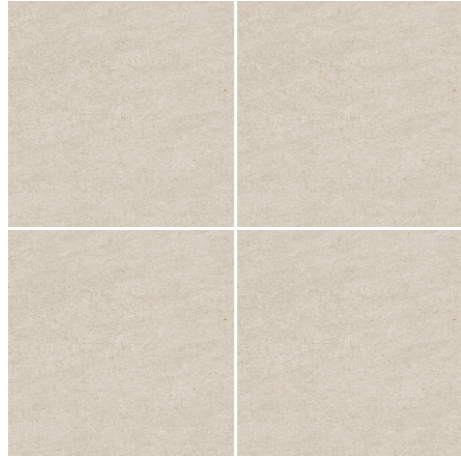


Dolorosa Cotto Plus (Texture)

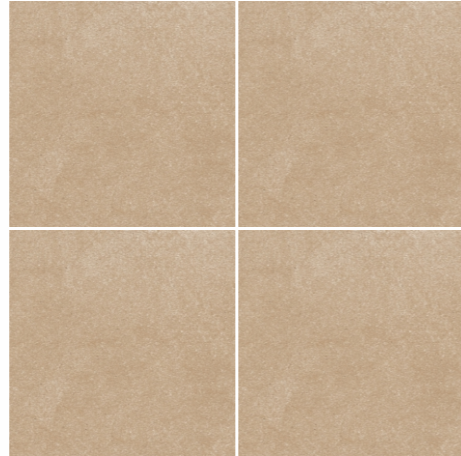


Vertic Grey (Texture)





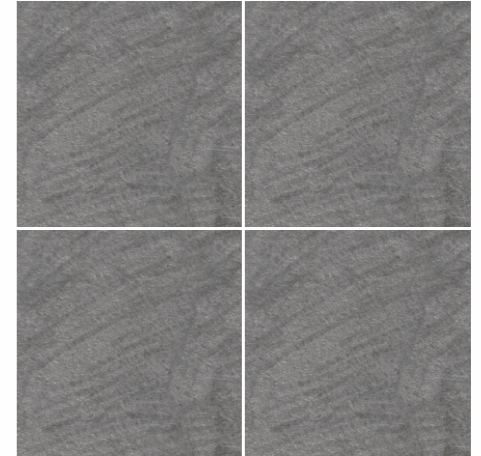
Rodiz Blush Plus
(Rustic Punch)



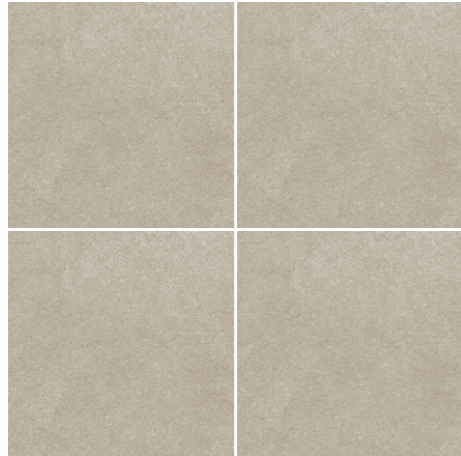
Rodiz Choco Plus
(Rustic Punch)



Petra Grey Plus
(Rustic Punch)



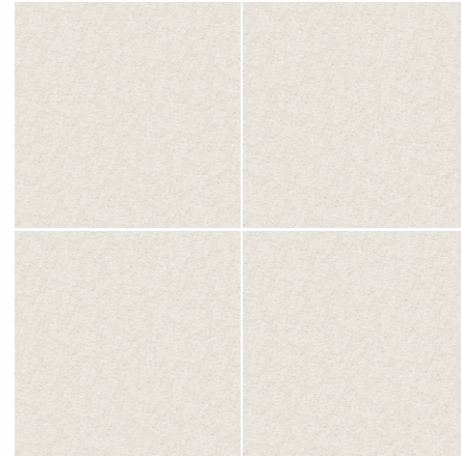
Petra Slate Plus
(Rustic Punch)



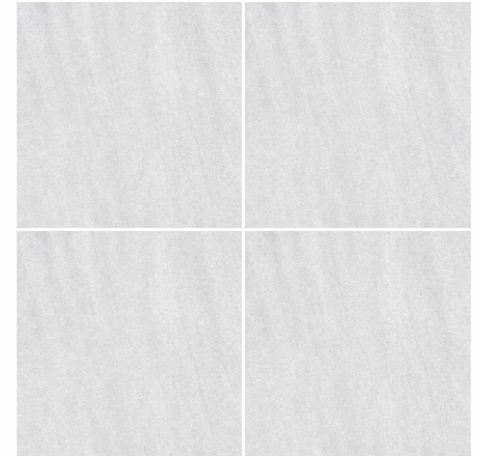
Rodiz Pista Plus
(Rustic Punch)



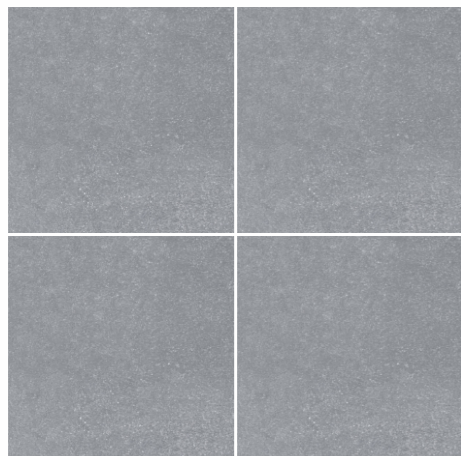
Rodiz Brown Plus
(Rustic Punch)



Grano White Plus
(Rustic Punch)



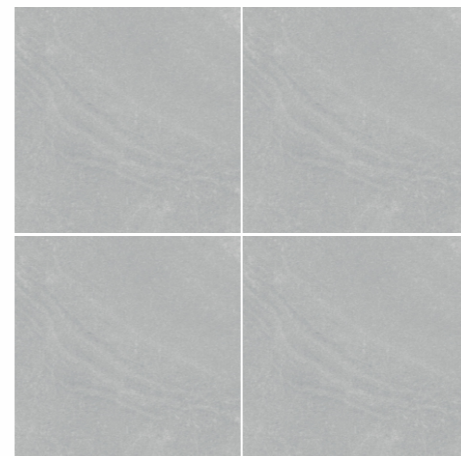
Grano Grey Plus
(Rustic Punch)



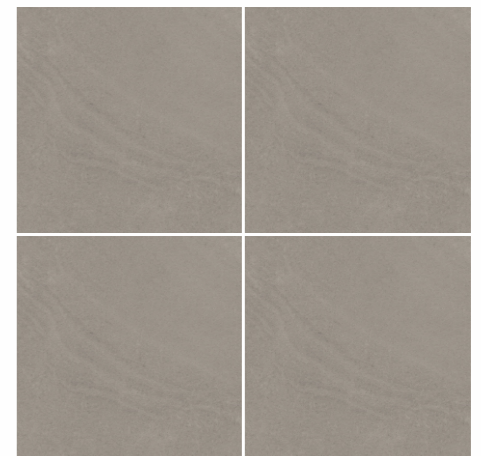
Rodiz Blue Plus
(Rustic Punch)



Petra Beige Plus
(Rustic Punch)



Grano Blue Plus
(Rustic Punch)

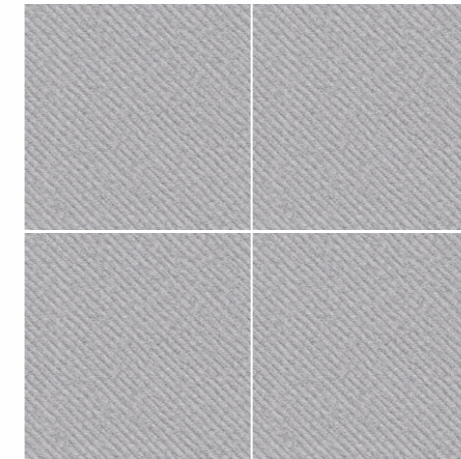


Grano Cement Plus
(Rustic Punch)

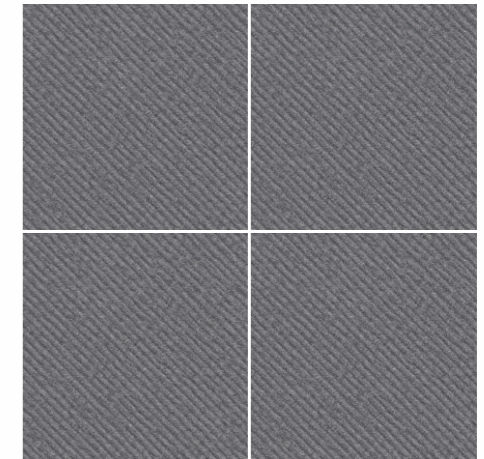




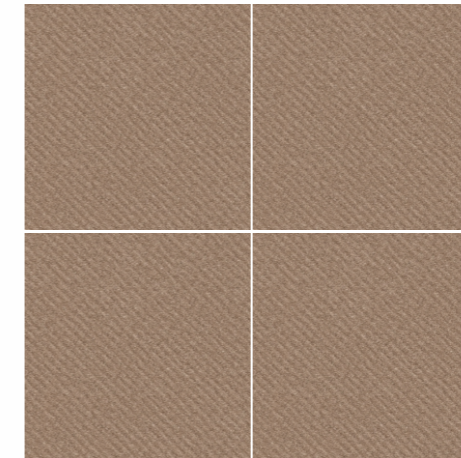
Geosand Brown Plus



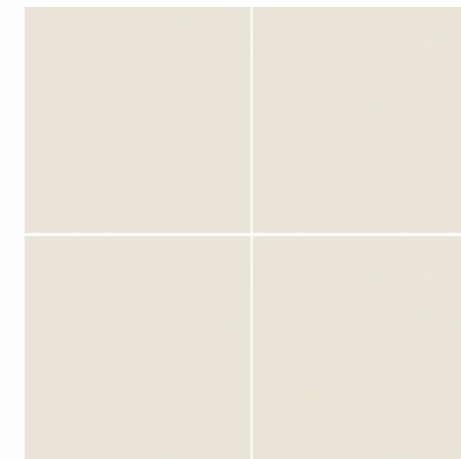
Geosand Gris Plus
 (Rustic Punch)



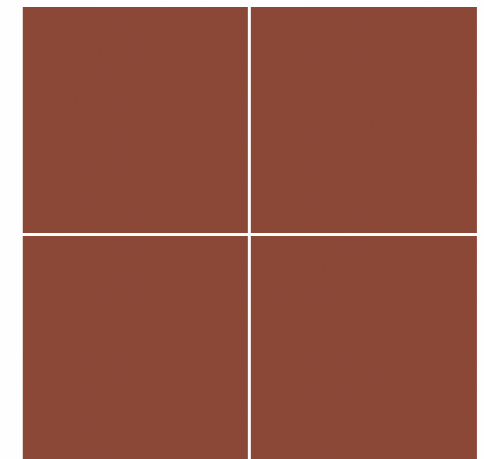
Geosand Grey Plus
 (Rustic Punch)



Geosand Brown Plus
 (Rustic Punch)

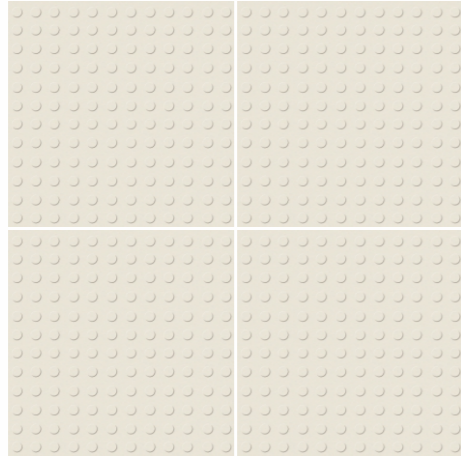


Beige

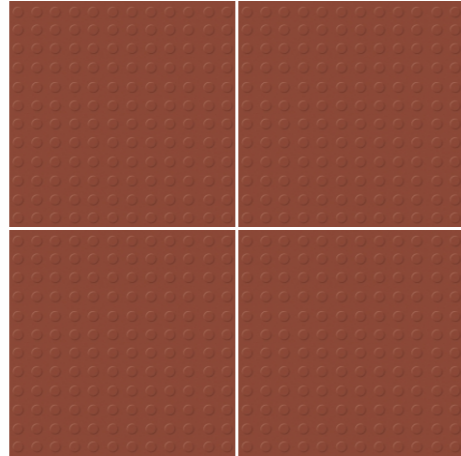


Rosa





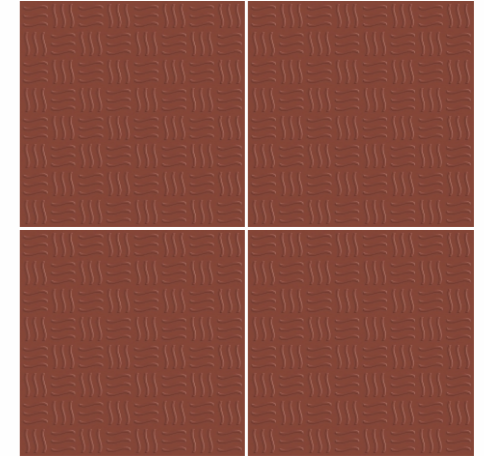
Bullet Beige



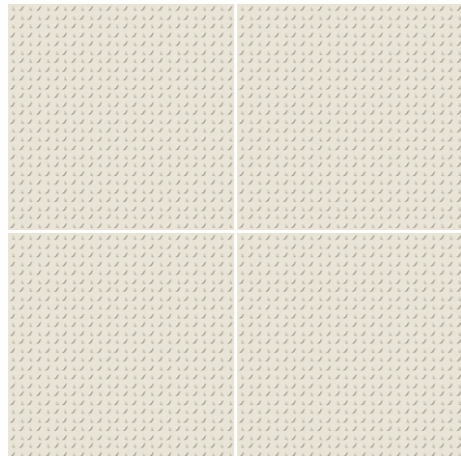
Bullet Rosa



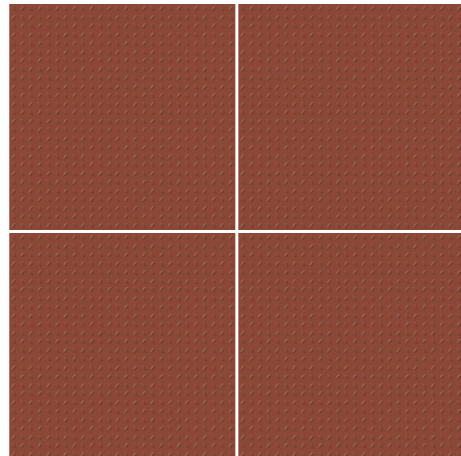
Curvy Beige



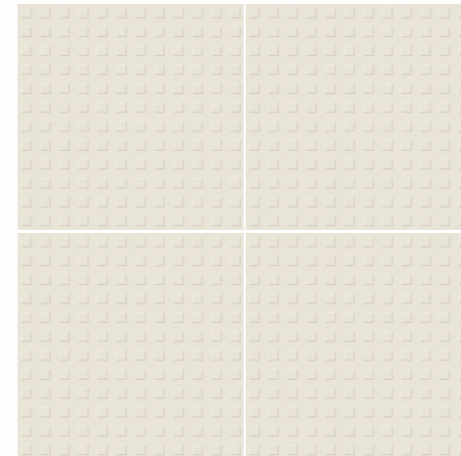
Curvy Rosa



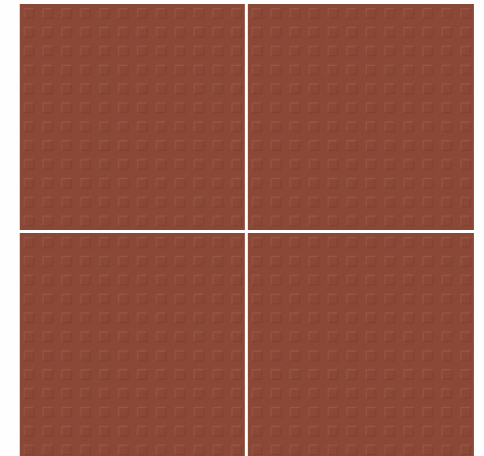
Grit Beige



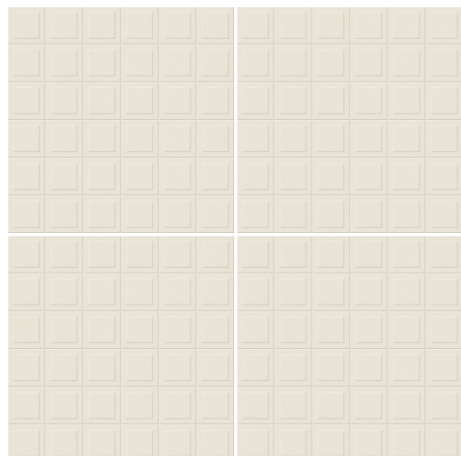
Grit Rosa



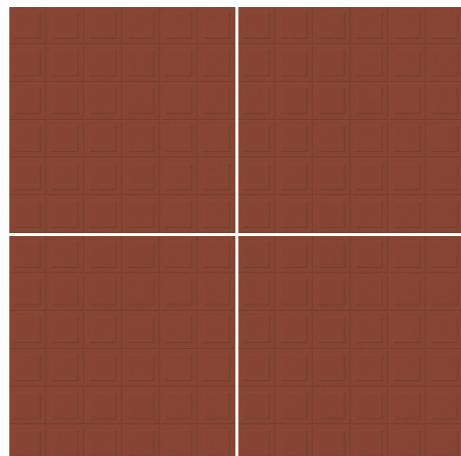
Tint Beige



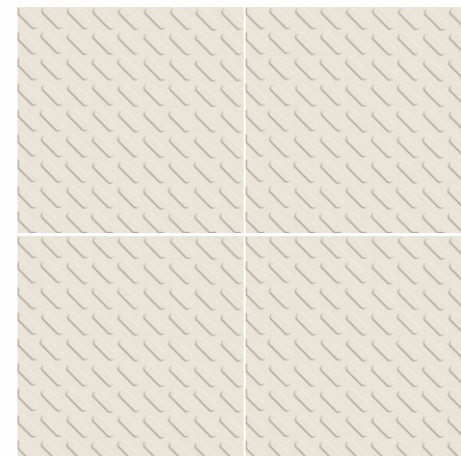
Tint Rosa



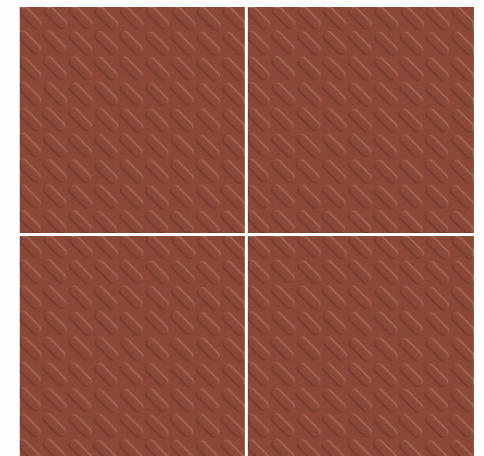
Blocks Beige



Blocks Rosa



Tabula Beige



Tabula Rosa





SOLAR REFLECTIVE ROOF TILES



- Saving of electricity
- Heavy Duty Vitrified
- Reduce surface temperature by 4 to 5 degree Celsius
- No Algae fungal growth
- Anti Skid, Anti Bacterial, Stain Resistance



ECO WHITE
Available size: 300x300mm | Thickness: 9mm

01 SRI (Solar Reflective Index) measure a roof's ability to reject solar heat (reflectance) and the ability to emit heat out (emittances).

04 The U.S green building councils LEED 2.2 user SRI as a way to evaluate a eco white. To get LEED accreditation, building should use a roof with minimum SRI value of 78.

02 Eco white reflects and emit the sun heat instead of absorbing it.

05 Eco white tile on the roof of a building can reduce inside building temperature by low degree centigrade.

03 Eco white is one that reflects the sun's heat and emits absorbed radiation back in to the atmosphere. This will keep the inside building cooler.

3. Results of the measurement:

Solar Direct Reflectance

Sample name	Sample ID	Measurement 1	Measurement 2	Measurement 3	Average
Parking Floor Tiles	SRI/10/18/1392	0.7067	0.7091	0.7083	0.7080

Emissivity

Sample name	Sample ID	Measurement 1	Measurement 2	Measurement 3	Average
Parking Floor Tiles	SRI/10/18/1392	0.918	0.919	0.919	0.919

Solar Reflectance Index (SRI) under different wind conditions

Sample name	Sample ID	Solar Reflectance Index (SRI)		
		Low Wind ($h_c=5 \text{ W m}^{-2} \text{ K}^{-1}$)	Medium Wind ($h_c=12 \text{ W m}^{-2} \text{ K}^{-1}$)	High Wind ($h_c=30 \text{ W m}^{-2} \text{ K}^{-1}$)
Parking Floor Tiles	SRI/10/18/1392	87	87	88

Surface Temperature (Ts) under different wind conditions

Sample name	Sample ID	Surface Temperature (°C)		
		Low Wind ($h_c=5 \text{ W m}^{-2} \text{ K}^{-1}$)	Medium Wind ($h_c=12 \text{ W m}^{-2} \text{ K}^{-1}$)	High Wind ($h_c=30 \text{ W m}^{-2} \text{ K}^{-1}$)
Parking Floor Tiles	SRI/10/18/1392	56.5	49.4	43.2

4. Certificate of Accuracy:

This is to certify that the test results herein presented are, to the best of my knowledge, true and accurate representations of the samples submitted.



Jigar Patel
Jigar Patel
Lab. Technician

Yashkumar Shukla
Yashkumar Shukla
Technical Director

Disclaimer:

- The CEPT Research and Development Foundation, CEPT University is not responsible for any kind of alterations in the physical property of the sample and the customer is solely responsible for it and its consequences.
- Result relates to the sample tested only. Sample will be destroyed after 7 days of issue of the report unless specified by the customer.
- Any complains about this report should be communicated in writing within 7 days of issue of the report.
- The test report shall not be reproduced fully or partially or in parts and cannot be used as an evidence in a court of law and shall be used in advertising media without written approval of Director, CEPT Research and Development Foundation, CEPT University.



TECHNICAL SPECIFICATION

TECHNICAL SPECIFICATION

HighDepth
Elevation

CHARACTERISTICS	Requirement as per ISO 13006:2018 Gr Bla E < 0.5%	Requirement as per IS 15622:2017 Gr Bla E < 0.08%	AGL VALUE	AGL VALUE 16mm	TEST METHOD
(A) DIMENSION & SURFACE QUALITY					
Deviation In Length & Width	± 0.3%	± 0.1%	± 0.1%	± 0.1%	ISO 10545 Part-2 IS 13630 Part-1
Deviation In Thickness	± 5.0%	± 5.0%	± 2.0%	± 3.0%	ISO 10545 Part-2 IS 13630 Part-1
Straightness of Edge	± 0.3%	± 0.1%	± 0.1%	± 0.1%	ISO 10545 Part-2 IS 13630 Part-1
Rectangularity	± 0.3%	± 0.1%	± 0.1%	± 0.1%	ISO 10545 Part-2 IS 13630 Part-1
Surface Flatness	± 0.4%	± 0.5%	± 0.2%	± 0.2%	ISO 10545 Part-2 IS 13630 Part-1
Surface Quality	Min. 95% of Tiles shall be free from visible defects that would impair the appearance of a major area of the tiles	Min. 95% of Tiles shall be free from visible defects that would impair the appearance of a major area of the tiles	Min. 95% of Tiles shall be free from visible defects that would impair the appearance of a major area of the tiles	Min. 95% of Tiles shall be free from visible defects that would impair the appearance of a major area of the tiles	ISO 10545 Part-2 IS 13630 Part-1

(B) PHYSICAL & THERMAL PROPERTIES

Water Absorption % By Wt.	≤ 0.5, Ind. 0.6 Max.	≤ 0.08, Ind. 0.1 Max.	≤ 0.05%	≤ 0.05% (16mm)	ISO 10545 Part-3 IS 13630 Part-2
Flexural Strength (MOR) In N/mm ²	Avr. 35, Ind. Min. 32	Avr. 35, Ind. Min. 32	≥ 41 N/mm ²	≥ 44 N/mm ²	ISO 10545 Part-4 IS 13630 Part-6
Breaking Strength in N	1300 N Min.	1300 N Min.	> 2000 N	Min. 6000N (16mm)	ISO 10545 Part-4 IS 13630 Part-6
Bulk Density (gm/cc)	2.0 Min.	2.2 Min.	≥ 2.2	≥ 2.3	ISO 10545 Part-3 IS 13630 Part-2
Impact Resistance	> 0.40	> 0.55	> 0.55	> 0.90 (16mm)	ISO 10545 Part-5 IS 13630 Part-14
Resistance to Surface Abrasion	Manufacturer to State Class	PEI II Min.	PEI IV	PEI IV	ISO 10545 Part-7 IS 13630 Part-11
Co-efficient of Linear Thermal Expansion from ambient temp to 100°C (K ⁻¹)	9x10 ⁻⁶ Max.	6x10 ⁻⁶ Max.	≤ 6x10 ⁻⁶ K ⁻¹	≤ 6x10 ⁻⁶	ISO 10545 Part-8 IS 13630 Part-4
Thermal Shock Resistance	10 Cycles Min.	10 Cycles Min.	Resistance after 10 Cycles	No Damage after 10 Cycles	ISO 10545 Part-9 IS 13630 Part-5
Moisture Expansion in mm/M	Test Method Available	0.02 Max.	Nil	Nil	ISO 10545 Part-10 IS 13630 Part-3
Crazing Resistance	Required	4 Cycles at 7.5 bar Min.	Resistance	Resistance	ISO 10545 Part-11 IS 13630 Part-9
Frost Resistance	Resistance	Resistance	Resistance	Resistance	ISO 10545 Part-12 IS 13630 Part-10
Moh'S Scratch Hardness	Min. 5	Min. 5	Min. 7	Min. 7	EN 101 IS 13630 Part-13

(C) CHEMICAL PROPERTIES

Resistance To Household Chemicals	No Damage	Min. Class AA	Class AA	Class AA	ISO 10545 Part-13 IS 13630 Part-8
Resistance To Acids & Alkalis (Except HF Acid)	No Damage	Min. Class AA	Class AA	Class AA	ISO 10545 Part-13 IS 13630 Part-8
Stain Resistance	Min. Class 3	Min. Class 1	Class 1	Class 1	ISO 10545 Part-14 IS 13630 Part-8

Packing Specification

Size (mm)	Thickness (mm)	No. of Tiles / Box	Area Sq. mtr. / Sq. ft. Per Box
600x600mm	9mm	04 pcs.	1.44m ² / 15.5 Sq. ft.
600x600mm	16mm	02 pcs.	0.72m ² / 7.75 Sq. ft.
600x1200mm	8.5mm	02 pcs.	1.44m ² / 15.5 Sq. ft.

CHARACTERISTICS	Standard as per ISO - 13006 / EN 14411 GROUP Bia	AGL VALUE	TEST METHOD
-----------------	--	-----------	-------------

DIMENSION & SURFACE QUALITY

Deviation In Length & Width	± 0.5%	± 0.2%	ISO-10545-2
Deviation In thickness	± 5.0%	± 4.0%	ISO-10545-2
Straightness in side	± 0.5%	± 0.2%	ISO-10545-2
Rectangularity	± 0.5%	± 0.2%	ISO-10545-2
Surface flatness	± 0.5%	± 0.2%	ISO-10545-2
Color difference	Unaltered	No Change	ISO-10545-16

STRUCTURAL PROPERTIES

Water absorption	< 0.50%	< 0.05%	ISO-10545-3
Apparent density	>2.0 G/CC	>2.1 G/CC	DIN 51082

MASSIVE MECHANICAL PROPERTIES

Modulus of rupture	Min. 35 N/mm ²	Min. 40 N/mm ²	ISO-10545-4
Breaking strength	Min. 1300 N	> 1300 N	ISO-10545-4

SURFACE MECHANICAL PROPERTIES

Surface abrasion resistance	As per mfg	Min. class-3	ISO-10545-7
MOH's Hardness	As per mfg	Min. 6	EN 101

THERMO HYGROMETRIC PROPERTIES

Frost resistance	No Damage	No Damage	ISO-10545-12
Thermal shock resistance	No Damage	No Damage	ISO-10545-9
Moisture expansion	Nil	Nil	ISO-10545-10
Thermal expansion (COE)	Max. 9.0 x 10 ⁻⁶	Max. 6.5 x 10 ⁻⁶	ISO-10545-8
Crazing resistance	As per mfg	Min. 4 cycle	ISO-10545-11

CHEMICAL PROPERTIES

Chemical Resistance	No Damage	No Damage	ISO-10545-13
Stain resistance	Resistant	Resistant	ISO-10545-14

SAFETY PROPERTIES

Slip resistance	As per mfg	>0.40	ISO-10545-17
Fire resistance	As per mfg	Fireproof	N.A.

Packing Specification

Size (mm)	Thickness (mm)	No. of Tiles / Box	Area Sq. mtr. / Sq. ft. Per Box
300x600mm (Elevation)	9mm	05 pcs.	0.9m ² / 9.68 Sq. ft.

CHARACTERISTICS	Requirement as per ISO 13006:2018 Gr Bla E ≤ 0.5%	Requirement as per IS 15622:2017 Gr Bla 0.08 ≤ E ≤ 3.0%	AGL VALUE	TEST METHOD
-----------------	--	--	-----------	-------------

(A) DIMENSION & SURFACE QUALITY

Deviation In Length & Width	± 0.3%	± 0.1%	± 0.1%	ISO 10545 Part-2 IS 13630 Part-1
Deviation In Thickness	± 5.0%	± 5.0%	± 3.0%	ISO 10545 Part-2 IS 13630 Part-1
Straightness of Edge	± 0.3%	± 0.1%	± 0.1%	ISO 10545 Part-2 IS 13630 Part-1
Rectangularity	± 0.3%	± 0.1%	± 0.1%	ISO 10545 Part-2 IS 13630 Part-1
Surface Flatness	± 0.4%	± 0.5%	± 0.2%	ISO 10545 Part-2 IS 13630 Part-1
Surface Quality	Min. 95% of Tiles shall be free from visible defects that would impair the appearance of a major area of the tiles	Min. 95% of Tiles shall be free from visible defects that would impair the appearance of a major area of the tiles	Min. 95% of Tiles shall be free from visible defects that would impair the appearance of a major area of the tiles	ISO 10545 Part-2 IS 13630 Part-1

(B) PHYSICAL & THERMAL PROPERTIES

Water Absorption % By Wt.	≤ 0.5, Ind. 0.6 Max.	0.08 ≤ E ≤ 3.0 Ind. 3.3 Max.	≤ 0.5	ISO 10545 Part-3 IS 13630 Part-2
Flexural Strength (MOR) In N/mm ²	Avr. 30, Ind. Min. 27	Avr. 30, Ind. Min. 27	≥ 35 N/mm ²	ISO 10545 Part-4 IS 13630 Part-6
Breaking Strength in N	1300 N Min.	1100 N Min.	> 1800 N	ISO 10545 Part-4 IS 13630 Part-6
Bulk Density (gm/cc)	2.0 Min.	2.0 Min.	≥ 2.2	ISO 10545 Part-3 IS 13630 Part-2
Resistance to Surface Abrasion	Manufacturer to State Class	PEI II Min	Min. PEI IV	ISO 10545 Part-7 IS 13630 Part-11
Co-efficient of Linear Thermal Expansion from ambient temp to 100°C (K ⁻¹)	9x10 ⁻⁶ Max.	7x10 ⁻⁶ Max.	≤ 6x10 ⁻⁶	ISO 10545 Part-8 IS 13630 Part-4
Thermal Shock Resistance	10 Cycle Min.	10 Cycle Min.	No Damage after 10 Cycles	ISO 10545 Part-9 IS 13630 Part-5
Moisture Expansion in mm/M	Test Method Available	0.02 Max.	Nil	ISO 10545 Part-10 IS 13630 Part-3
Craze Resistance	Required	4 Cycle at 7.5 bar Min.	Resistance	ISO 10545 Part-11 IS 13630 Part-9
Frost Resistance	Resistance	Resistance	Resistance	ISO 10545 Part-12 IS 13630 Part-10
Moh'S Scratch Hardness	Min. 5	Min. 5	≥ 7	EN 101 IS 13630 Part-13

(C) CHEMICAL PROPERTIES

Resistance To Household Chemicals	No Damage	Min. Class AA	Class AA	ISO 10545 Part-13 IS 13630 Part-8
Resistance To Acids & Alkalis (Except HF Acid)	No Damage	Min. Class AA	Class AA	ISO 10545 Part-13 IS 13630 Part-8
Stain Resistance	Min. Class 3	Min. Class 1	Class 1	ISO 10545 Part-14 IS 13630 Part-8

Packing Specification

Size (mm)	Thickness (mm)	No. of Tiles / Box	Area Sq. mtr. / Sq. ft. Per Box
400x400mm (Grandura)	12mm	05 pcs.	0.80 m ² / 8.61 Sq. ft.
300x300mm (Grandura)	9mm	08 pcs.	0.72 m ² / 7.75 Sq. ft.
300x300mm (Grandura)	9mm	10 pcs.	0.90 m ² / 9.69 Sq. ft.

CHARACTERISTICS	Requirement as per ISO 13006:2018 Gr Bla E ≤ 0.5%	Requirement as per IS 15622:2017 Gr Bla 0.08 ≤ E ≤ 3.0%	AGL VALUE	TEST METHOD
-----------------	--	--	-----------	-------------

(A) DIMENSION & SURFACE QUALITY

Deviation In Length & Width	± 0.3%	± 0.1%	± 0.1%	ISO 10545 Part-2 IS 13630 Part-1
Deviation In Thickness	± 5.0%	± 5.0%	± 3.0%	ISO 10545 Part-2 IS 13630 Part-1
Straightness of Edge	± 0.3%	± 0.1%	± 0.1%	ISO 10545 Part-2 IS 13630 Part-1
Rectangularity	± 0.3%	± 0.1%	± 0.1%	ISO 10545 Part-2 IS 13630 Part-1
Surface Flatness	± 0.4%	± 0.5%	± 0.2%	ISO 10545 Part-2 IS 13630 Part-1
Surface Quality	Min. 95% of Tiles shall be free from visible defects that would impair the appearance of a major area of the tiles	Min. 95% of Tiles shall be free from visible defects that would impair the appearance of a major area of the tiles	Min. 95% of Tiles shall be free from visible defects that would impair the appearance of a major area of the tiles	ISO 10545 Part-2 IS 13630 Part-1
Solar Reflectance Index (SRI)			Min 75	

(B) PHYSICAL & THERMAL PROPERTIES

Water Absorption % By Wt.	≤ 0.5, Ind. 0.6 Max.	0.08 ≤ E ≤ 3.0, Ind. 3.3 Max.	≤ 0.5%	ISO 10545 Part-3 IS 13630 Part-2
Flexural Strength (MOR) In N/mm ²	Avr. 30, Ind. Min. 27	Avr. 30, Ind. Min. 27	≥ 35 N/mm ²	ISO 10545 Part-4 IS 13630 Part-6
Breaking Strength in N	1300 N Min.	1100 N Min.	> 1800 N	ISO 10545 Part-4 IS 13630 Part-6
Bulk Density (gm/cc)	2.0 Min.	2.0 Min.	≥ 2.2	ISO 10545 Part-3 IS 13630 Part-2
Resistance to Surface Abrasion	Manufacturer to State Class	PEI II Min	Min PEI IV	ISO 10545 Part-7 IS 13630 Part-11
Co-efficient of Linear Thermal Expansion from ambient temp to 100°C (K ⁻¹)	9x10 ⁻⁶ Max.	7x10 ⁻⁶ Max.	≤ 6x10 ⁻⁶	ISO 10545 Part-8 IS 13630 Part-4
Thermal Shock Resistance	10 Cycle Min.	10 Cycle Min.	No Damage after 10 Cycles	ISO 10545 Part-9 IS 13630 Part-5
Moisture Expansion in mm/M	Test Method Available	0.02 Max.	Nil	ISO 10545 Part-10 IS 13630 Part-3
Craze Resistance	Required	4 Cycle at 7.5 bar Min.	Resistance	ISO 10545 Part-11 IS 13630 Part-9
Frost Resistance	Resistance	Resistance	Resistance	ISO 10545 Part-12 IS 13630 Part-10
Moh'S Scratch Hardness	Min. 5	Min. 5	≥ 7	EN 101 IS 13630 Part-13

(C) CHEMICAL PROPERTIES

Resistance To Household Chemicals	No Damage	Min. Class AA	Class AA	ISO 10545 Part-13 IS 13630 Part-8
Resistance To Acids & Alkalis (Except HF Acid)	No Damage	Min. Class AA	Class AA	ISO 10545 Part-13 IS 13630 Part-8
Stain Resistance	Min. Class 3	Min. Class 1	Class 1	ISO 10545 Part-14 IS 13630 Part-8

Packing Specification

Size (mm)	Thickness (mm)	No. of Tiles / Box	Area Sq. mtr. / Sq. ft. Per Box
300x300mm	9mm	08 pcs.	0.72m ² / 7.75 Sq. ft.

Where Surface
MEETS RESPONSIBILITY



Asian Granito India Limited Achieves **GreenPro** Certification from CII, Reinforcing Its Position in Green Building Materials

- GreenPro Certification covers AGL's key product categories including **Wall Tiles, Porcelain Body Tiles, Full Body Vitrified Tiles, Glazed Vitrified Tiles, Dual Sink-double Digital Tiles, Double Charged Vitrified Tiles and Soluble Salt Tiles**
- Recognition underscores AGL's focus on environmentally responsible manufacturing and sustainable standards
- Supports the growing demand for certified green materials in India's construction sector

GreenPro certification, developed by the Confederation of Indian Industry, is one of India's most trusted eco-labels, recognising products that meet stringent environmental and sustainability standards across their life cycle. This certification reinforces AGL's long-standing commitment to responsible growth, supported by ISO 14001-certified manufacturing practices, collaboration with green building councils like IGBC, and continuous investment in energy efficiency, water conservation, and waste reduction. Receiving the GreenPro certification strengthens AGL's role in promoting sustainable construction, aligns with global ESG priorities, and supports the construction industry's growing preference for certified green materials in both commercial and residential projects.



NOTES

- All Technical Specifications in This Catalogue are for Premium Grade Material only.
- SHADE/SIZE VARIATION are inherent characteristics to ceramics. Certain products purposely have variations which are part of design & process. The same have been indicated.
- It is recommended to blend tiles by mixing tiles from various boxes & check for natural hue before fixing the tiles.
- It is recommended to check the tiles before laying/fixing. Quality standards cover 1st/Premium Quality only.
- Company's liability is limited on material that has not been laid.
- NO COMPLAINT SHALL BE ENTERTAINED ON TILES ALREADY FIXED/LAID.
- The liability is also limited to the material supplied by the company; no other claim is entertained under any circumstances.
- No complaint is entertained on decoration done on tiles. other than the ones done by Asian Granito India Ltd.

GENERAL NOTE: Any complaint must be brought to the company's notice within 10 days of purchase & before fixing of tiles.

How to avoid defects & complaints:

- Use Premium Quality Tiles
- Select tile sizes that are adaptable to the space, prioritizing the area dimensions rather than just the intended use.
- Avoid careless laying of Tiles
- Avoid poor maintenance for instance, by cleaning with strong chemicals or with abrasive equipment e.g. metallic scrubber
- Always keep Tiled area clean & ensure dusting/mopping regularly
- Put Doormats/Foot-mats at all strategic locations to avoid loose debris/dust from entering the Tiled area



List of detergents for removal of stain.

STAIN (Created by)	Beer	Blood	Calcar	Cement	Cigarette	Soft Drinks	Coffee	Edible Oil	Glue	Ice Cream	Ink	Juices	Marker Ink	Nicotine	Paints	Resin	Rust	Tar	Tea	Turmeric	Wine
SOLVENTS (Turpentine, Acetone, Trichloroety - Line etc.)								•	•		•		•			•		•			
SODIUM HYPO (Chlorite (NaOCL)												•								•	
ACIDS DILUTED (Hydrochloric acid*)			•	•	•						•			•	•		•			•	
ALKALI (Sodium hydroxide/potassium hydroxide)	•	•				•	•			•											•

*Commercial grade shall not be used

DISCLAIMER : Asian Granito India Ltd. reserves the right to delete & amend either totally or partially, any of the colors, shapes, sizes, references and other technical specifications contained in this catalogue at anytime. The colors shown of tiles in this catalogue are purely illustrative and limited to printing process. Please refer actual sample before final selection. The details of sizes, colors, references should be verified for typographical errors. All complaints need to be reported within 10 days of purchase. Always follow instructions to avoid complaint due to bad masonry.

CORPORATE OFFICE & BRANCHES



DISPLAY CENTRE & OFFICE

GUJARAT

Display Centre - Ahmedabad

AGL Luxury Tile Arcade

S.G. Highway, Nr. Gota Cross Road,
Beside Gota over bridge, Ahmedabad - 382481.

Mobile: 98258 03713 / 99099 29920

E-mail: asianworld.amd@aglasiangranito.com

AGL Export House - Morbi

Ch-5, Eden Ceramic City,
Opp.Honest Hotel, National Highway,
Lalpar Road, Morbi - 363642.

Mobile: 99799 90591

E-mail: exportmorbi@aglasiangranito.com

AGL Showroom

Future Ceramic Private Limited

Nr. Adicon Ceramica Tiles Pvt, Survey No. 84P1,
84P2, 85/1, 85/2P1, 85/2P2, B/h Harikrupa
Papers LLP, 8-A NH, At Post Gala, Morbi - 363642.

Mobile: 93166 32661

E-mail: display@futureceramic.co.in

Factory Display Centre - Morbi

(Sanitaryware & Faucets)

AGL Sanitaryware Pvt. Ltd.

Survey No. 153 P1, 153 P2, 154 P2, 8A National
Highway, B/h. Bahadurgadh Bus Stand,
At. Bahadurgadh, Morbi - 363642.

Mobile: 93166 32908

E-mail: export34@aglasiangranito.com

MAHARASHTRA

AGL Display Centre - Mumbai

A- 402, Citi Point, Nr. kohinoor Hotel,
Opp. ICICI Bank, J.B. Nagar,
Chakala Metro Station, Andheri (East),
Mumbai - 400 059. Mobile: 93214 95229
E-mail: mumbaishowroom@aglasiangranito.com

AGL Display Centre - Mumbai

(Marblex & Grestek)

Gala Impecca, Gr. Floor, Mathuradas Vasanji Rd,
Next to Courtyard Marriott, J. B. Nagar,
Kurla - Andheri Road, Andheri (East) - 400059.
Mobile : 76000 98595

AGL Display Centre - Pune

Capital Square, 1st & 2nd floor, Plot No. 5,
Opp. Kataria High School, Industrial Estate,
Mukund Nagar, Pune - 411037.
Mobile : 93717 65505

TELANGANA

AGL Display Centre - Hyderabad

202 2nd Floor & 302 3rd Floor, Kurve Elite,
Plot No. 58, Phase-1, Kamala Puri Colony Main Rd,
Opp. Krishe Meadows, Hyderabad - 500073.

Mobile: 99099 90434, 96420 11146

E-mail: hydshowroom1@aglasiangranito.com,
hydshowroom@aglasiangranito.com

TAMILNADU

AGL Display Centre - Chennai

Bascon Futura SV IT Park, 2nd Floor, 56-L,
Venkatanarayana Rd, Parthasarathi Puram,
T. Nagar, Chennai - 600017.

Mobile: 98408 47193

KARNATAKA

AGL Display Centre - Bangalore

Asian Granito India Ltd., Region Office

No. 37/17, 31/18, Brahmananda Court, Opp.
R Kannada News Channel, S.R. Nagar,
Lalbagh main road, Bangalore - 560027.

Mobile: 81605 21204

E-mail: bangloreshowroom@aglasiangranito.com

KERALA

AGL Display Centre - Kochi

No.51/2910 D2 Adjacent To Bread World,
Thykoodam Bridge Service Road,
Vytila, Kochi - 682019.

Mobile: 78618 09641

E-mail: cochinshowroom@aglasiangranito.com

WEST BENGAL

AGL Display Centre - Kolkata

5th Floor, Office No. 5A, PS SOLARIS Building,
113/H, Opp. Flaming Hospital. Matheswartala Rd.
Topsia, Kolkata - 700046.

Mobile: 85840 65565

E-mail: kolkattashowroom@aglasiangranito.com

UTTAR PRADESH

AGL Display Centre - Noida

F-15, Ground Floor, Sector 8,
Gautam Buddha Nagar,
Noida - 201301.

Mobile: 85111 30500

E-mail: noidashowroom@aglasiangranito.com

OFFICE

GUJARAT

Corp. Office - Ahmedabad

ASIAN GRANITO INDIA LTD.

202, Dev Arc, Opp. Iskcon Temple,
S. G. Highway, Ahmedabad - 380 015.

Phone: +91 79 66125500/698

Toll Free: 1800 123 3455

E-mail: info@aglasiangranito.com

AGL Office - Morbi

B - 26, Parshwanath Complex-1
Opp. kuber Cinema, 8-A National Highway,
Lalpar Road, Morbi - 363642.

Mobile: 9825802077

E-mail: aglmorbi@aglasiangranito.com

RAJASTHAN

AGL Office - Jaipur

Lower Ground, D-5, Vaishali Nagar,
Jaipur - 302021.

Mobile: 70734 84069

MADHYA PRADESH

AGL Office - Indore

3rd Floor, Plot No 101, WB Scheme No. 94,
Sector - B, Opp. HDFC Bank,
Nr. Bombay Hospital, Indore - 452010.

Mobile: 99092 62533 / 73140 06670

E-mail: acctsindore@aglasiangranito.com

TAMIL NADU

AGL Office - Trichy

Mark Diamond Residency, No-36,
V O C Road, Cantonment, Trichy - 620001.

Mobile: 99406 00262

PUNJAB

AGL Office - Chandigarh

CCC Chandigarh City Centre, Block A
3rd Floor, Soho 325, Vip Road, Near Metro
Zirakpur, Chandigarh - 140603.

Mobile : 93163 13880, 99882 22471





Asian Granito India Ltd.

Regd. & Corp. Office

202, Dev Arc, Opp. Iskcon Temple, S.G. Highway,
Ahmedabad - 380 015, Gujarat, INDIA

Phone: +91 79 66125500/698 | CIN: L17110GJ1995PLC027025

E-mail : info@aglasiangranito.com | Web : www.aglasiangranito.com

Follow Us:    



1800 123 3455
Toll-free: Mon-Sat 10am-6pm

ONE SCAN AWAY TO EXPLORE MORE ABOUT US



SCAN CODE TO
DOWNLOAD
AGL TILES APP



SCAN CODE TO
DOWNLOAD
CATALOGUE



SCAN TO FIND
EXCLUSIVE
STORE