



FRESCO  
RIZON | FRESCO  
COLLECTION

# Introducing FRESCO RIZON Collection

## A New Dawn in DECORATIVE SURFACES

A standout from the Rizon Collection, the 200x200mm Fresco Rizon tile blends artistic charm with timeless form, **inspired by the rising light of the horizon**. Each compact tile features rich detail and soulful patterns, turning walls and floors into warm, story-filled galleries where art and surface meet.

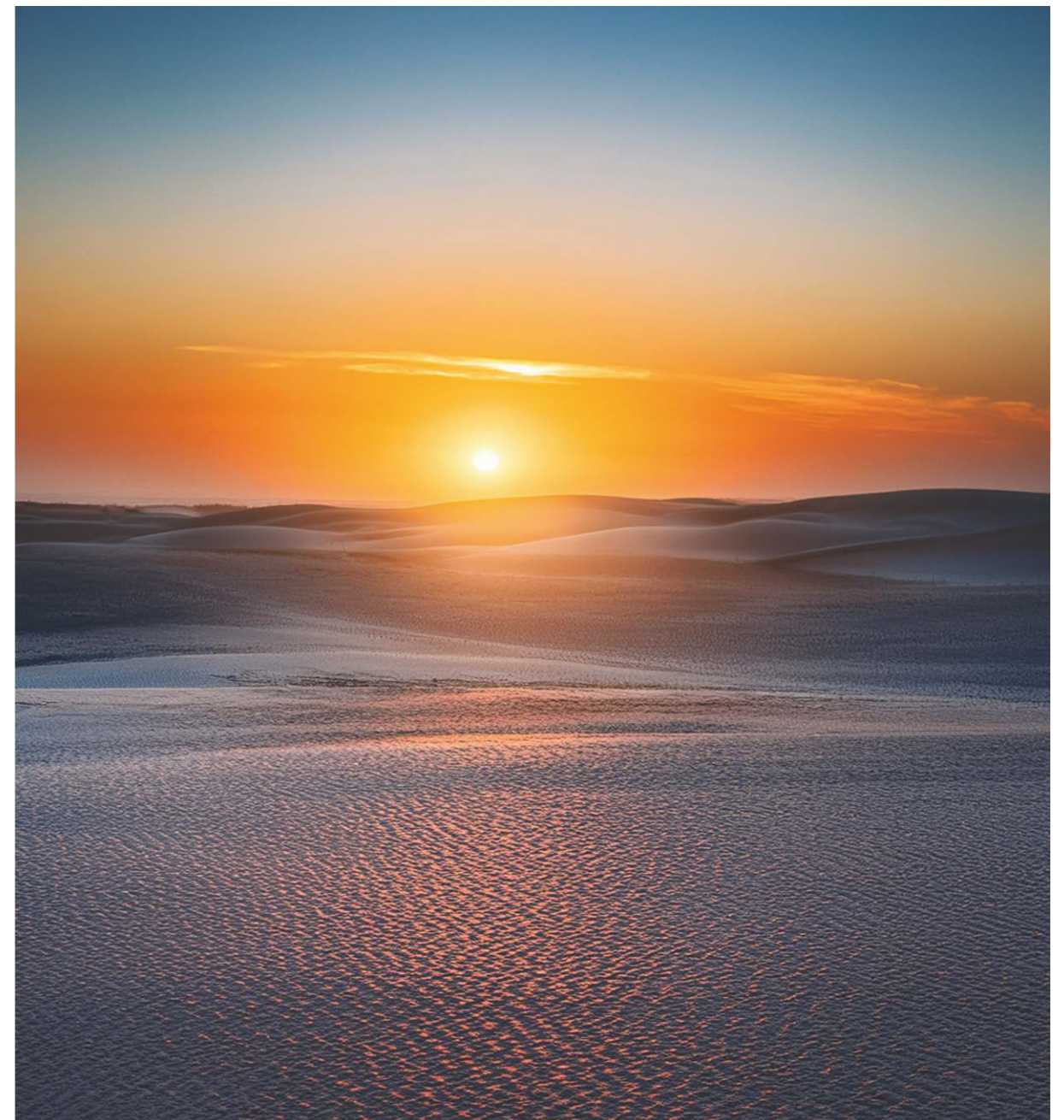
Size: 200x200mm

No. of Concept	No. of Series	No. of Effect
54	07	03

Designed Exclusive for  
'FRESCO' Segment



FRESCO  
RIZON  
COLLECTION



FRESCO  
**RIZON**  
COLLECTION

SERIES

● HYUSORA

● RUG

● WALLPAPER

● MOROCCAN

● DECOR

● POSTER

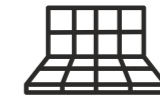
Surface: **Matt**

Effects: **MT Granules | GL Granules | Carving**

**APPLICATION AREAS**



Residential  
(Living Room, Bedroom, Kitchen)



Indoor Area



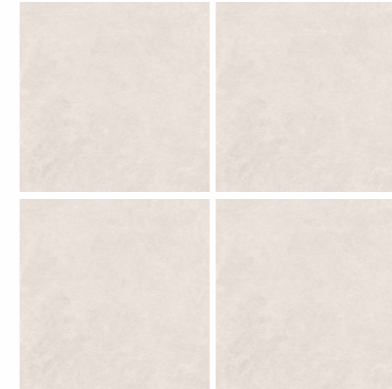
Balcony



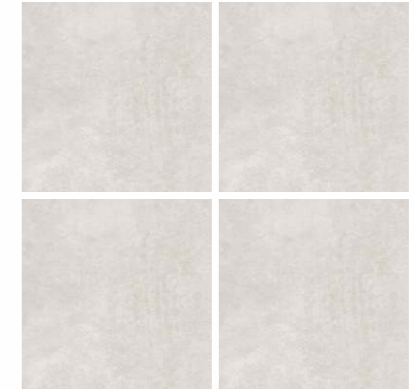
Bathroom



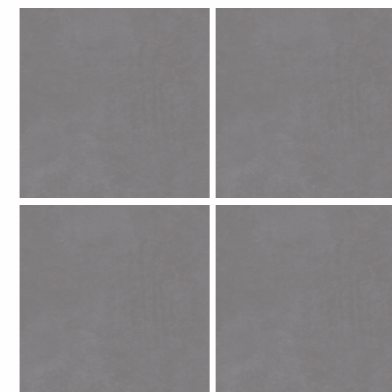
Offices



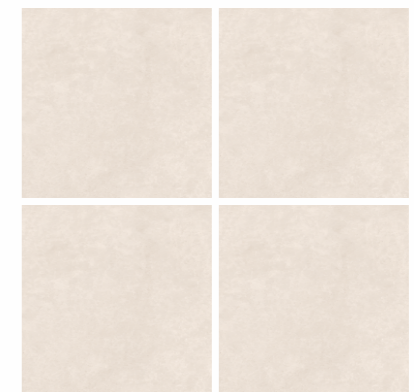
Hyusora Bliss



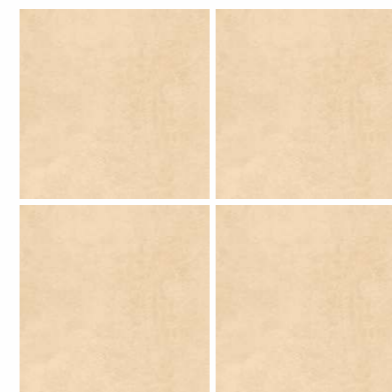
Hyusora Calm



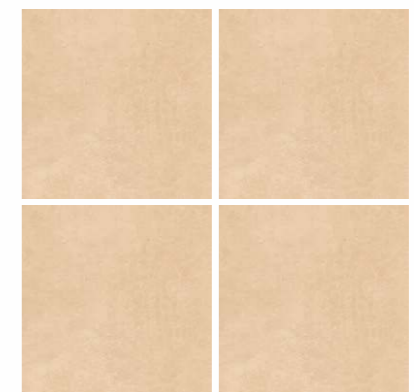
Hyusora Drift



Hyusora Glow



Hyusora Hush

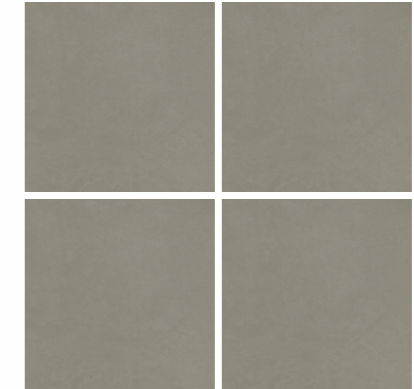


Hyusora Ease

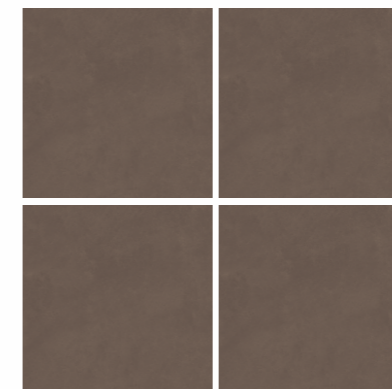




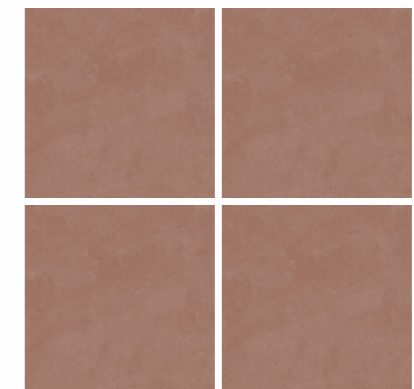
Hyusora Lush



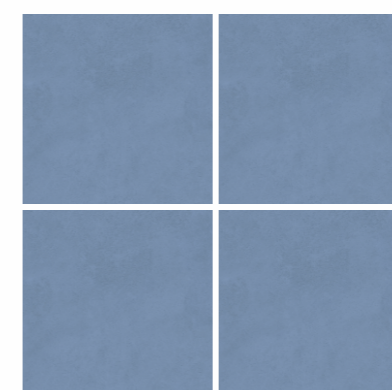
Hyusora Hope



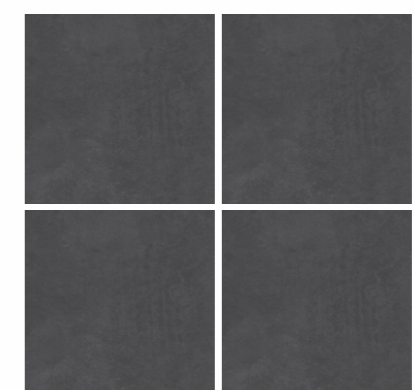
Hyusora Whimsy



Hyusora Muse



Hyusora Serenity



Hyusora Charm

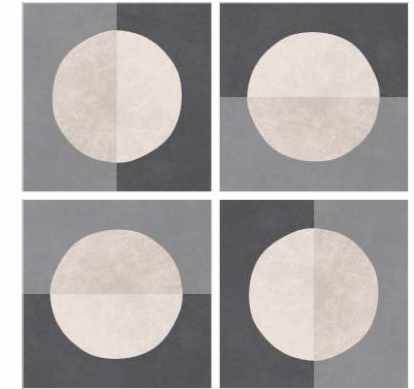




African Sage



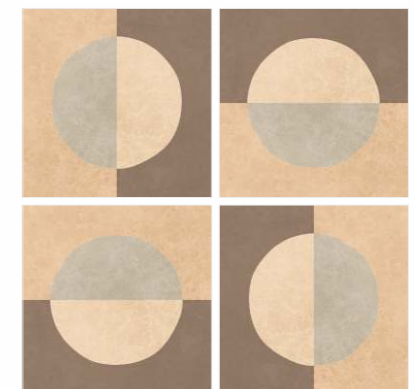
African Ivor  
 (Glossy Granules)



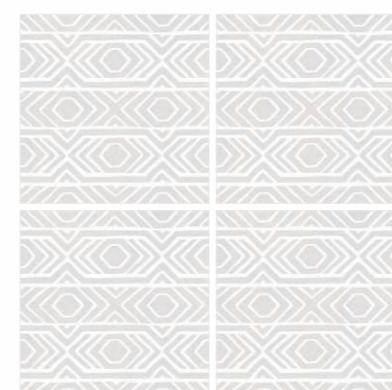
Sphere Classic  
 (Glossy Granules)



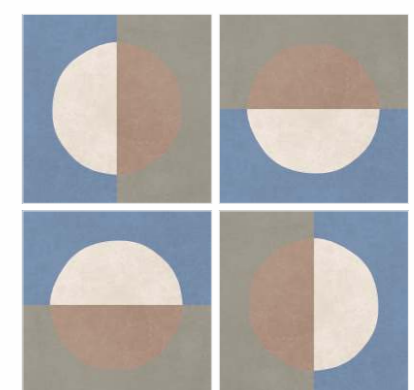
African Sage  
 (Glossy Granules)



Sphere Heritage  
 (Glossy Granules)

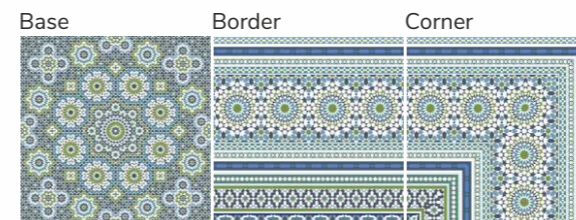


African Myst  
 (Glossy Granules)

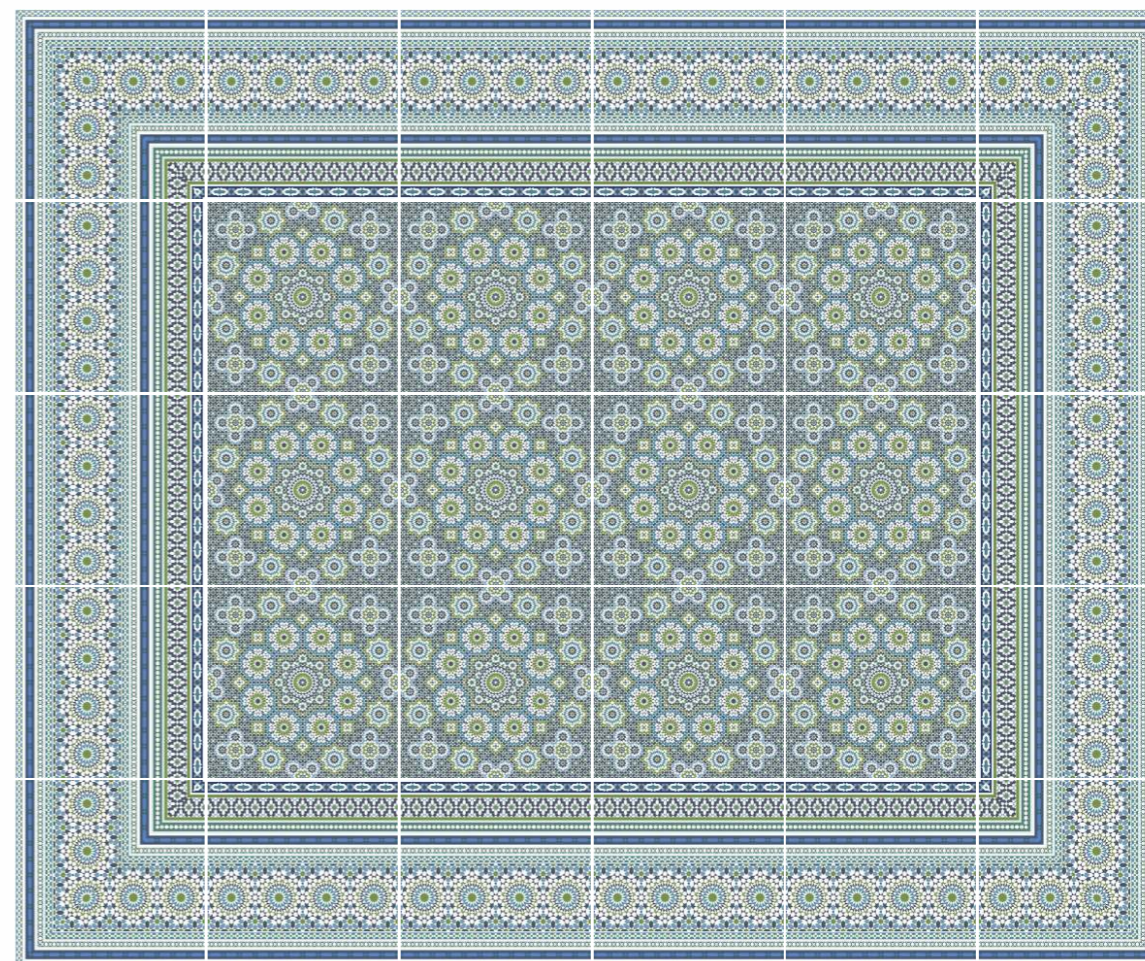


Sphere Morden  
 (Glossy Granules)



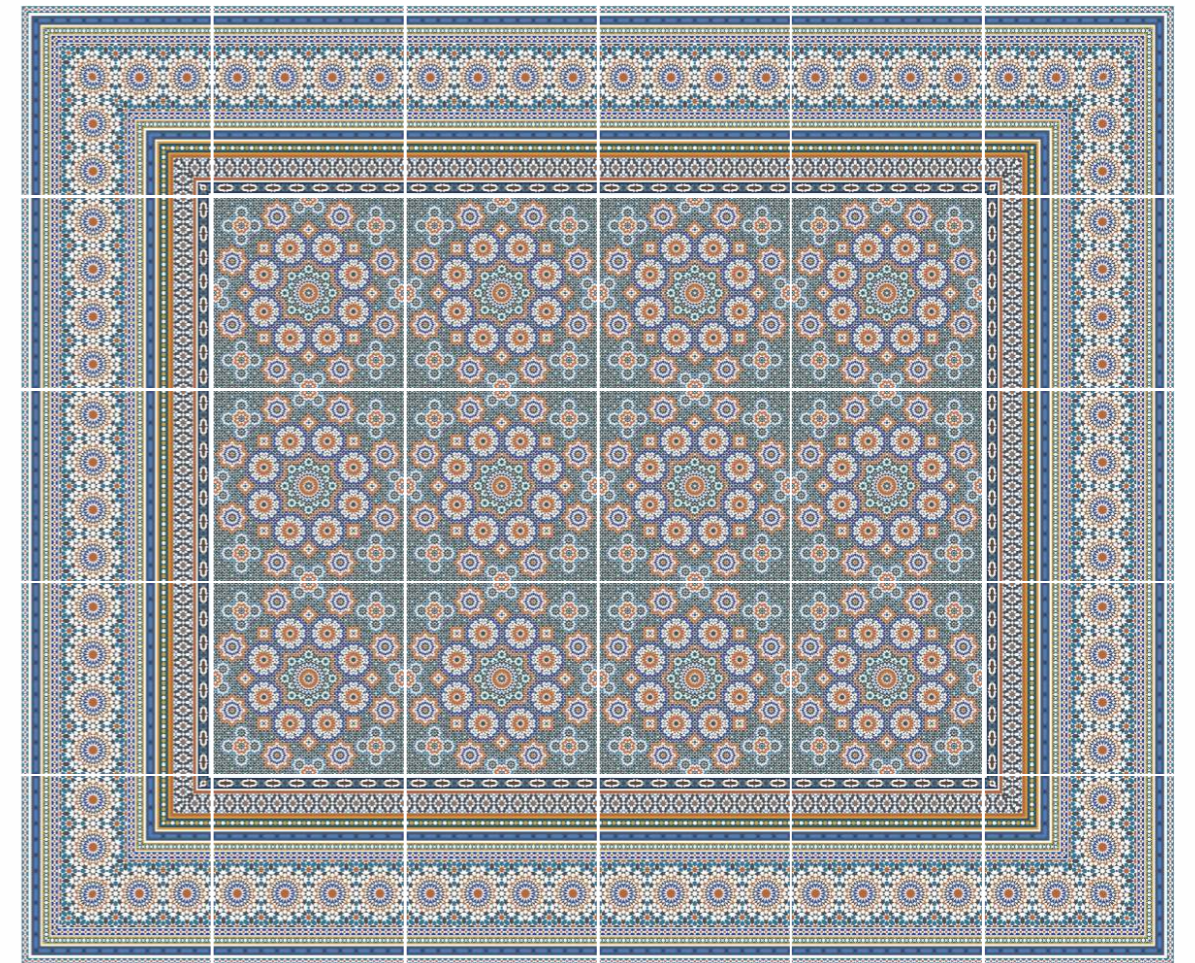


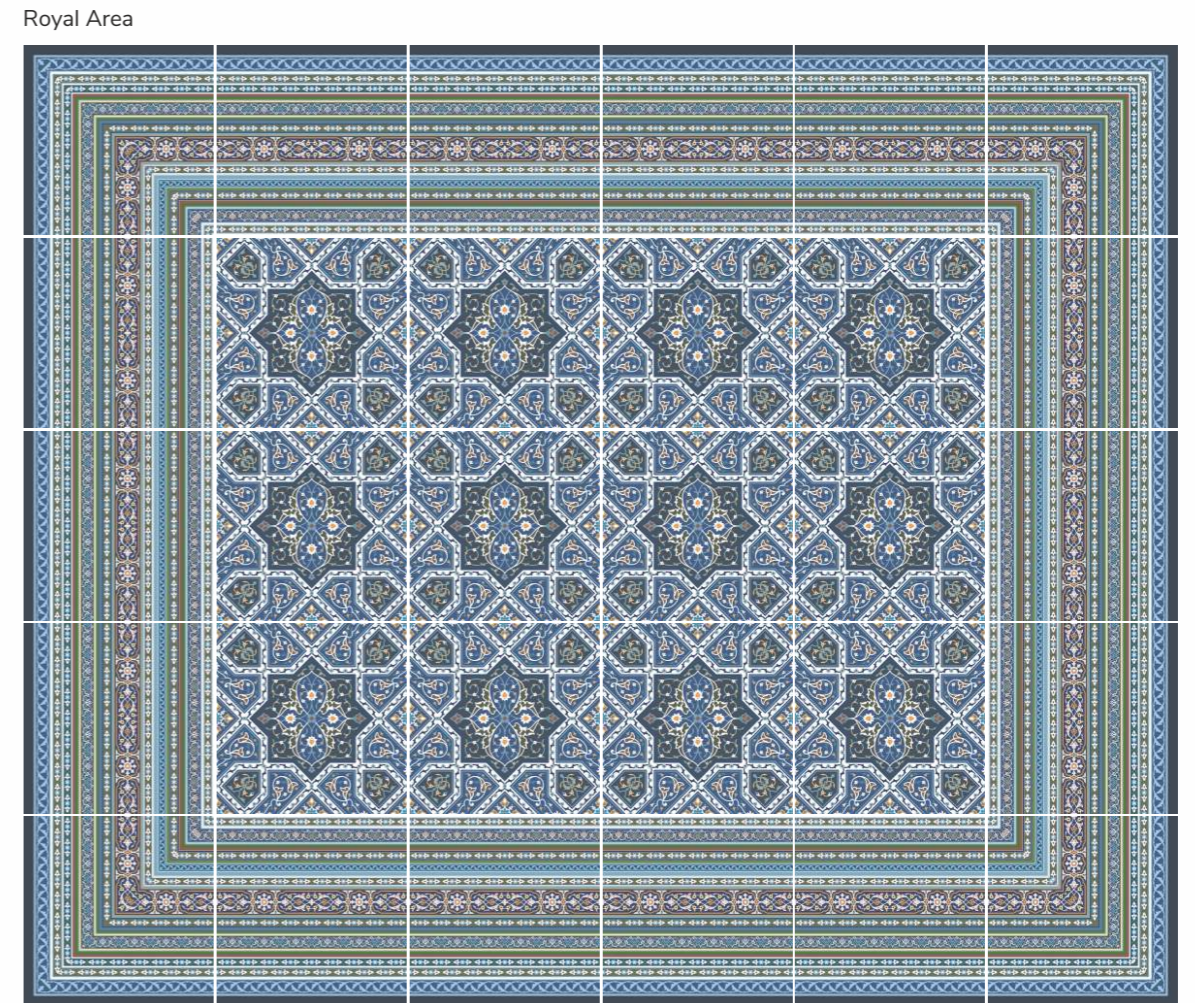
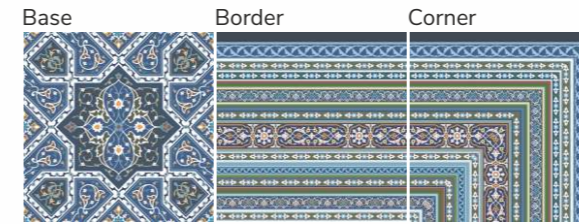
Caliph Pearl (Carving)





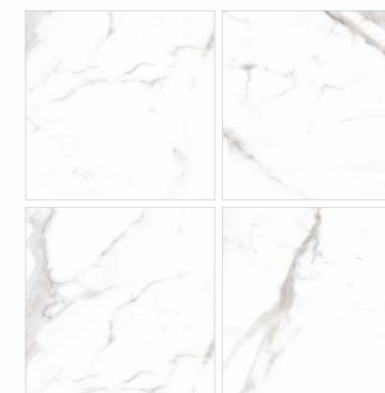
Caliph Gem (Carving)



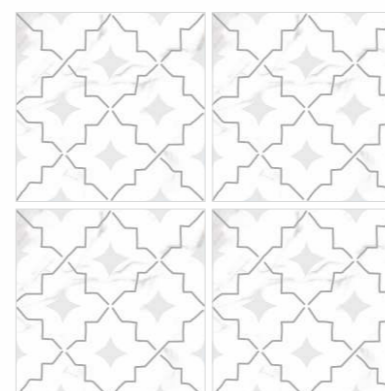




Marmoblanc Hexa  
 (Glossy Granules)



Marmoblanc  
 Random 10



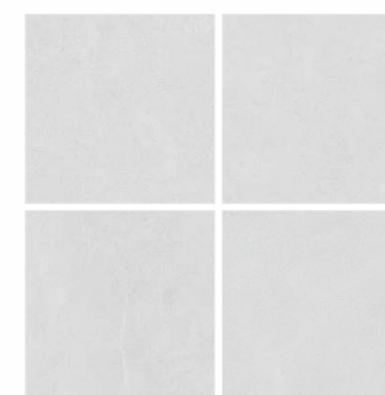
Cosmahal White  
 (Glossy Granules)



Marmoblanc  
 Random 10

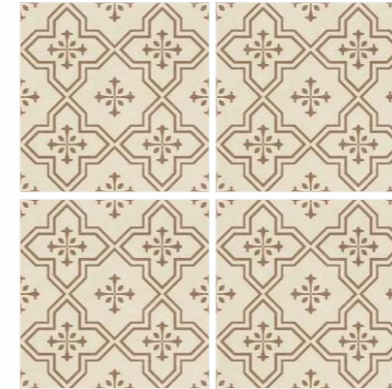


Rosedust Tropica  
 (Matt Granules)  
 Random 04

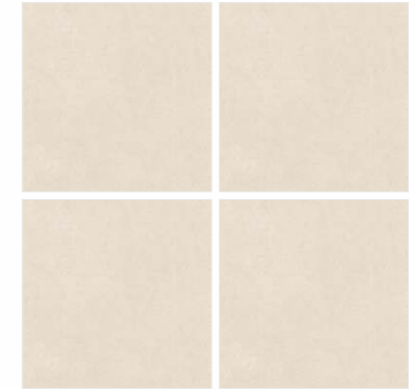


Rosedust  
 Random 24

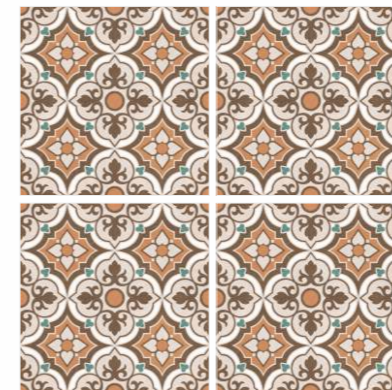




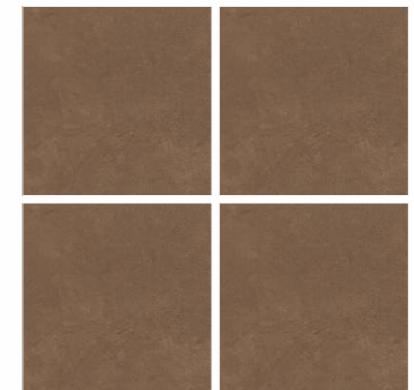
Coco Angle  
 (Glossy Granules)



Coco  
 Random 04



Browny Curve  
 (Glossy Granules)



Browny  
 Random 03

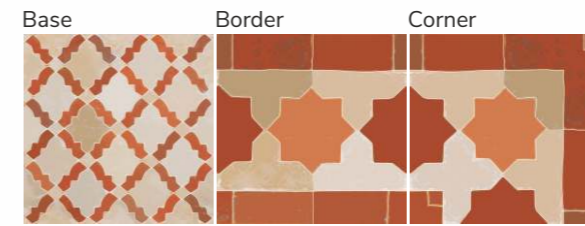


Flora Aloe  
 (Glossy Granules)



Flora  
 Random 08



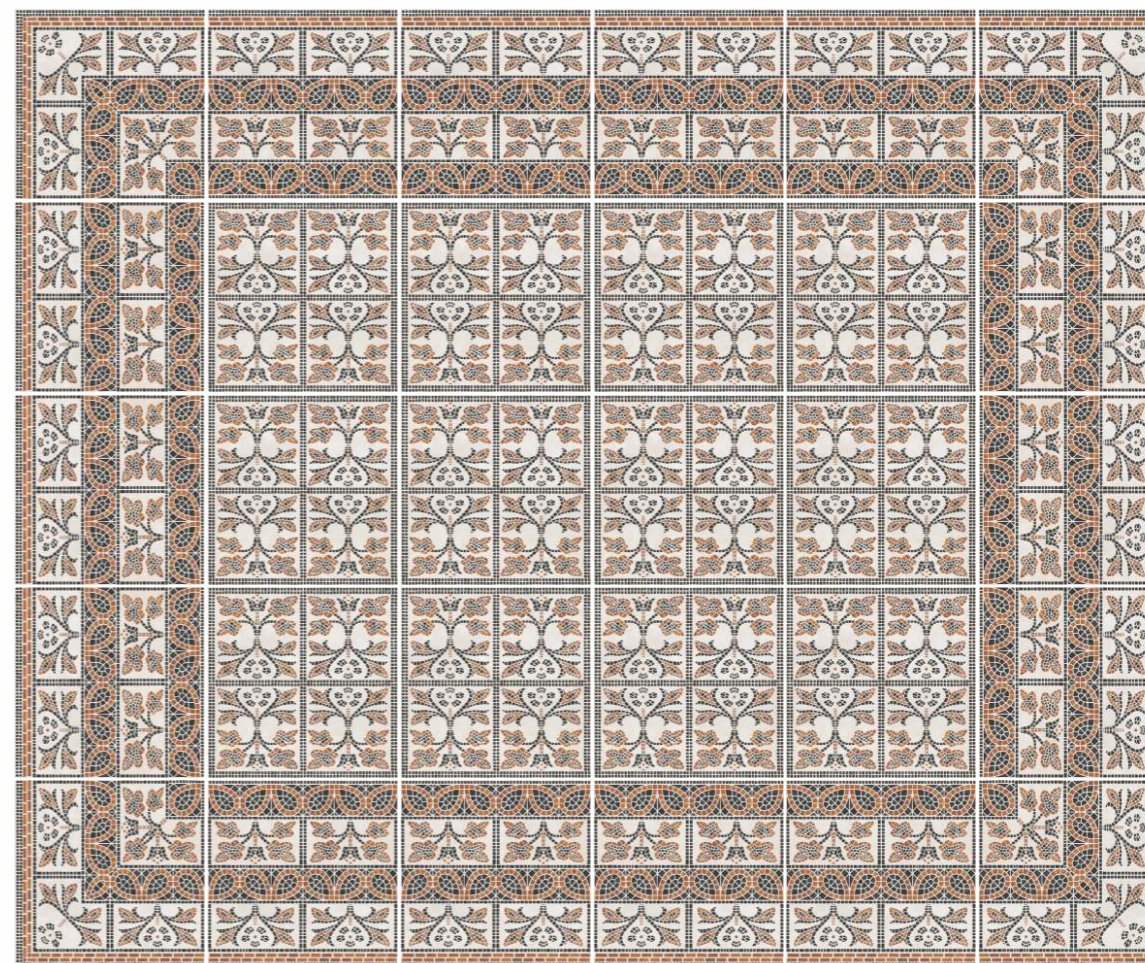


Waxterra (Matt Granules)





Mosaico Terra (Glossy Granules)





Sage Cross



Morocco Sea  
 (Carving)  
 Random 06



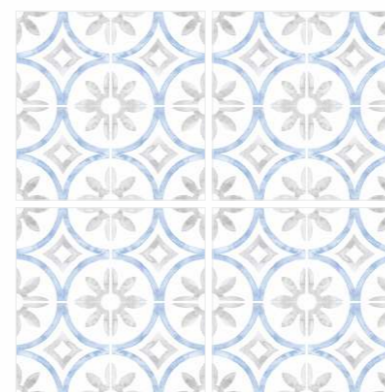
Sage Cross  
 (Carving)



Morocco Terra  
 (Carving)  
 Random 06



Flaggy Joy  
 (Carving)  
 Random 08



Watero Coal  
 (Glossy Granules)

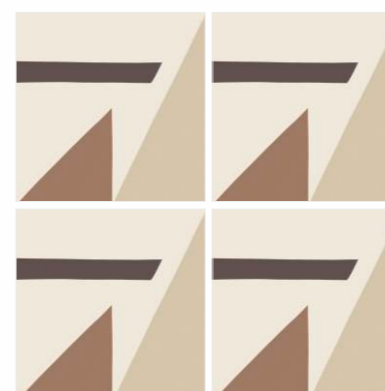




**Abstraculer**  
 (Glossy Granules)  
 Random 04



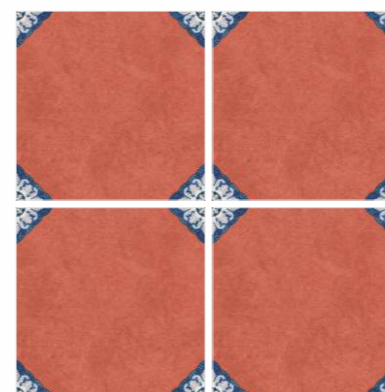
**Home Garden**  
 (Glossy Granules)  
 Random 06



**Punto Lustra**  
 (Glossy Granules)



**Lava**  
 (Glossy Granules)  
 Random 12



**Terra Vitrosa**  
 (Glossy Granules)

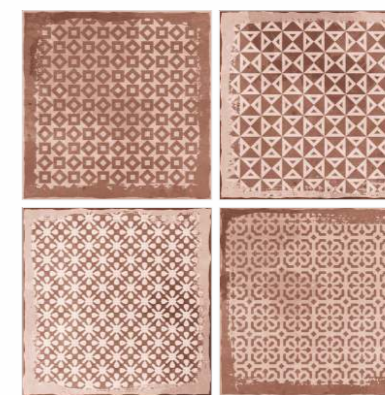


**Matria**  
 (Glossy Granules)  
 Random 06





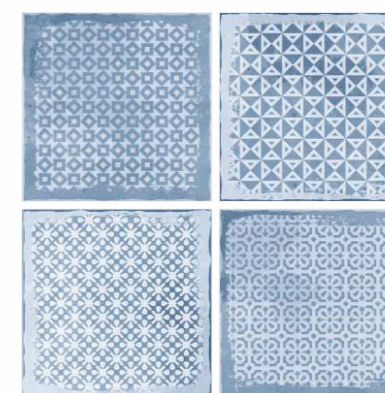
**Crysta Ash**  
 (Glossy Granules)  
 Random 06



**Emerge Mud**  
 (Glossy Granules)  
 Random 08



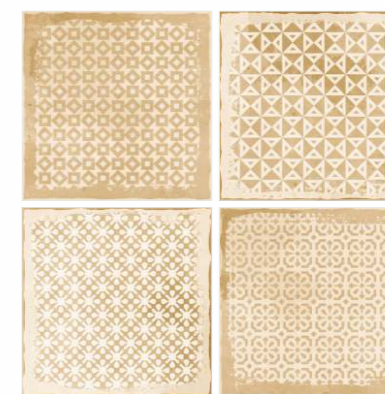
**Crysta Ink**  
 (Glossy Granules)  
 Random 06



**Emerge Sky**  
 (Glossy Granules)  
 Random 08



**Crysta Trunk**  
 (Glossy Granules)  
 Random 06



**Emerge Terra**  
 (Glossy Granules)  
 Random 08

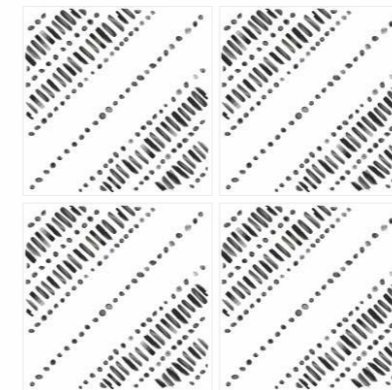




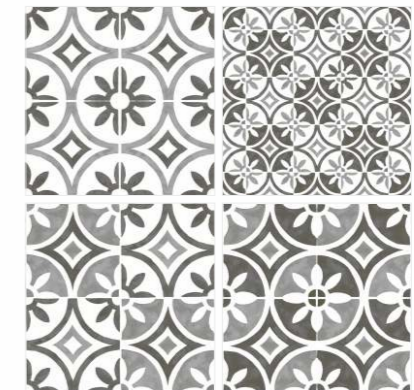
Espana Sea  
 (Glossy Granules)  
 Random 08



Espana Soil  
 (Glossy Granules)  
 Random 08



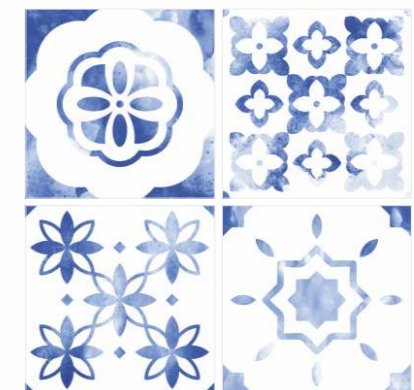
Gem Noir  
 (Glossy Granules)



Black Pearl  
 (Glossy Granules)  
 Random 04

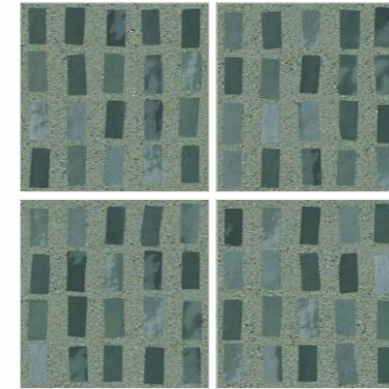


Boxy Teal  
 (Glossy Granules)

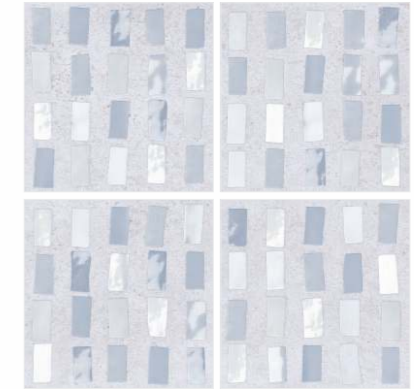


Euro Ink  
 (Glossy Granules)  
 Random 06





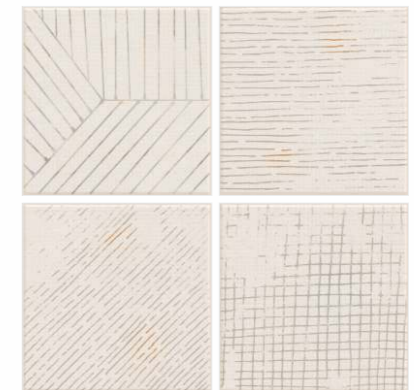
Jellyblock Aloe  
 (Glossy Granules)  
 Random 04



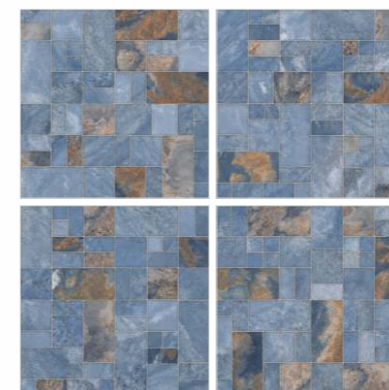
Jellyblock Myst  
 (Glossy Granules)  
 Random 04



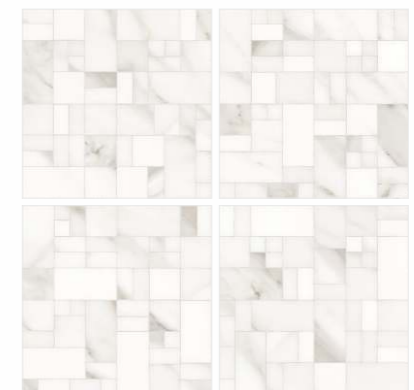
Linea Warm  
 (Glossy Granules)  
 Random 09



Linea Neutral  
 (Glossy Granules)  
 Random 09



Marmosaic Azzure  
 (Glossy Granules)  
 Random 04



Marmosaic Bianco  
 (Glossy Granules)  
 Random 04





Orna Cement  
 (Glossy Granules)  
 Random 04



Orna Brick  
 (Glossy Granules)  
 Random 04



Pavilion Bliss  
 (Glossy Granules)  
 Random 12



Rabat Squares  
 (Glossy Granules)  
 Random 25

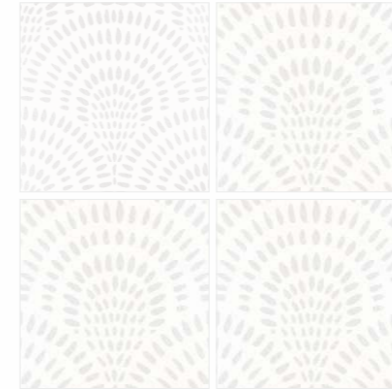


Persian Teal  
 (Glossy Granules)  
 Random 04

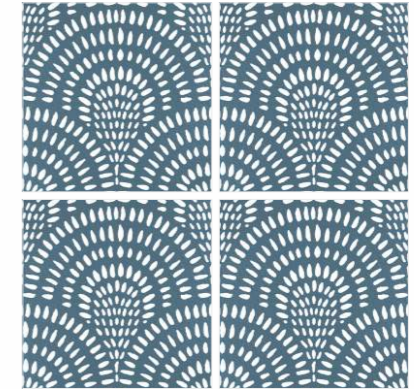


Sketch Pen  
 (Glossy Granules)  
 Random 16





Shell Ice  
 (Matt Granules)



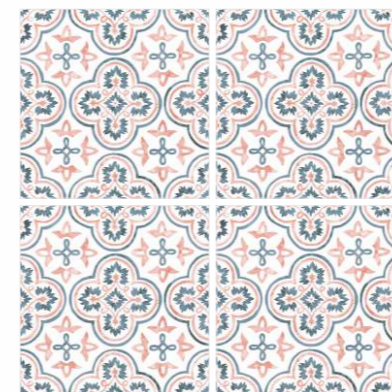
Shell Aqua  
 (Matt Granules)



Sharpen Bisque  
 (Matt Granules)



Sharpen Sage  
 (Matt Granules)



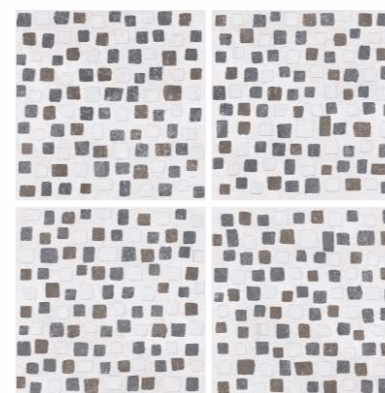
Sharpen Rose  
 (Matt Granules)



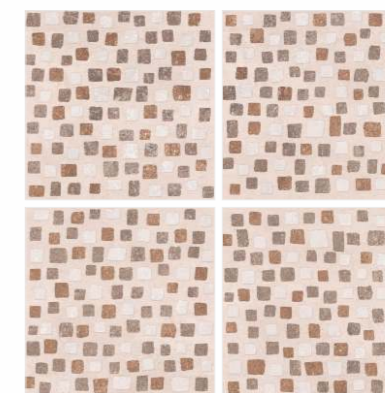
Brickline  
 (Matt Granules)

Random 06

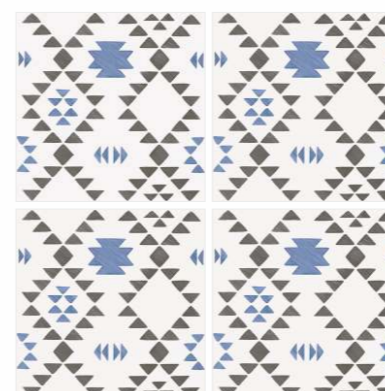




Squable Moon  
 (Matt Granules)  
 Random 04



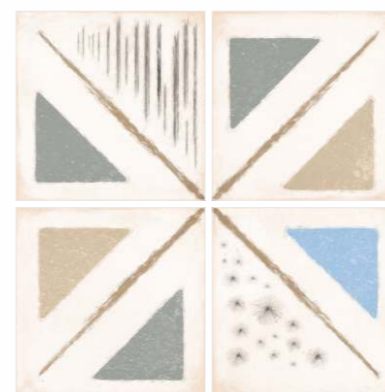
Squable Sun  
 (Matt Granules)  
 Random 04



Toran Blue  
 (Matt Granules)



Toran Brown  
 (Matt Granules)



Tokyo Sweet  
 (Matt Granules)  
 Random 04



Warm Tempo  
 (Matt Granules)  
 Random 06





Cronyx Motif



Ventine Motif (Carving)  
 Random 04



Crosthine Motif  
 (Glossy Granules)



Cronyx Motif  
 (Glossy Granules)

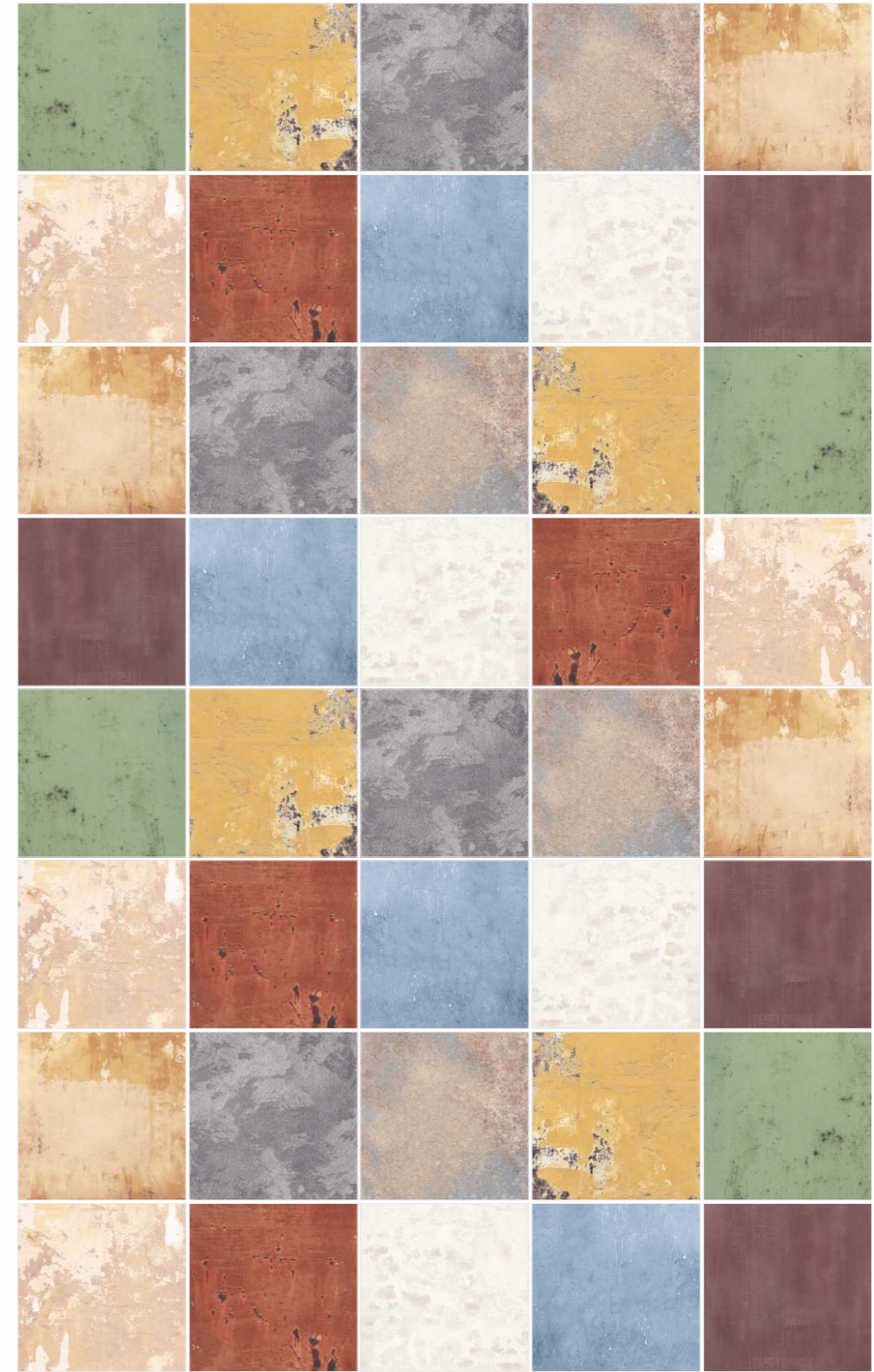


Venyx Motif  
 (Glossy Granules)  
 Random 02





Wallrust

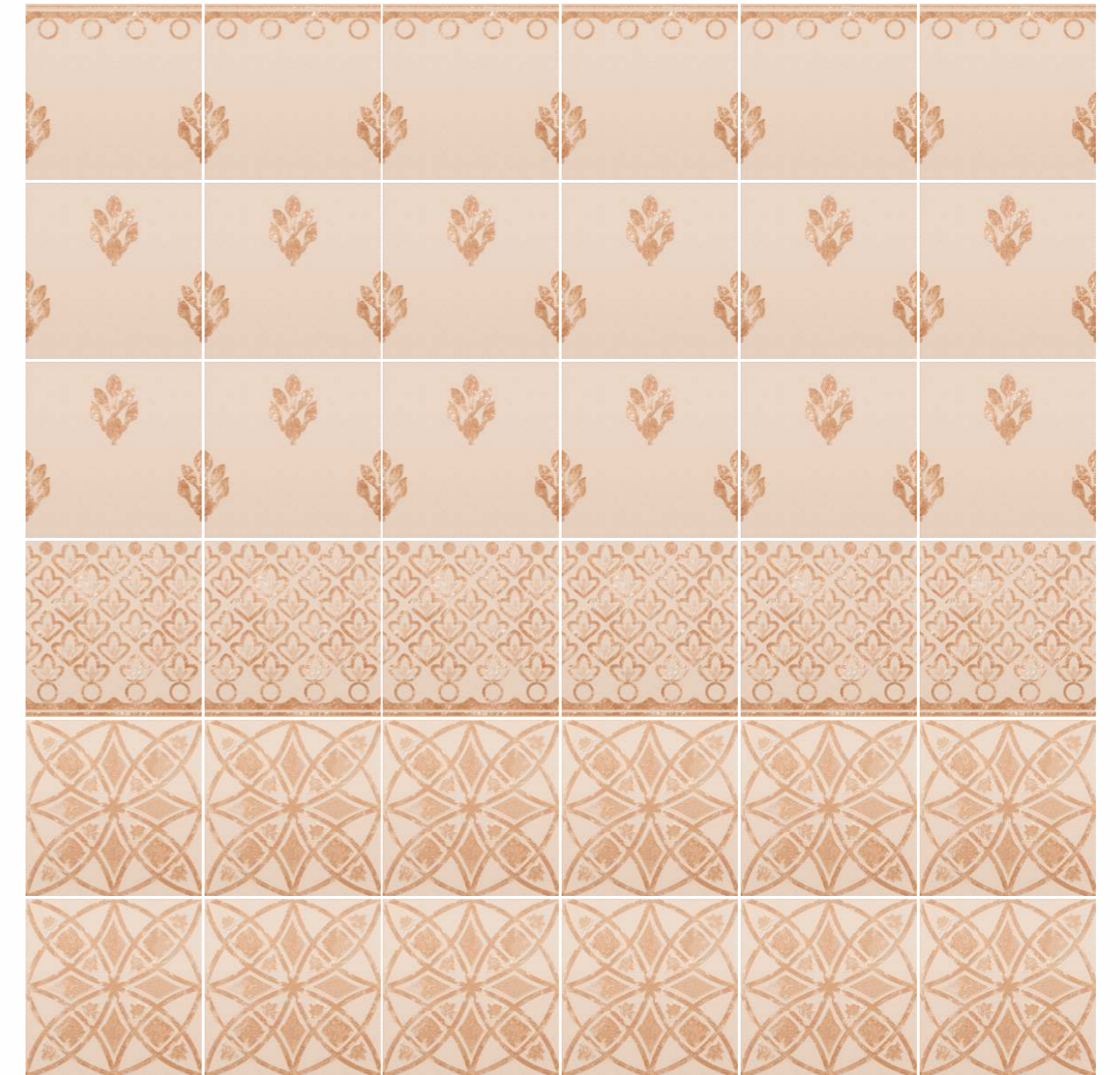


Random 10





Jewel Gold (Glossy Granules)





Jim Corbett (Glossy Granules)



Random 36



# Fresco Collection

## Celebrates The Artful Craftsmanship Of Decorative Design,

Transforming surfaces into expressions of creativity and character. Inspired by timeless artistry, the collection is thoughtfully crafted to add visual interest and design depth to contemporary spaces. Offered in multiple dimensions, Fresco includes a classic square format of 200x200mm, a sleek brick format of 65x260mm, and intricately designed mosaic options available in various micro sizes. These formats allow designers and architects to create patterns, highlights, and statement features with ease.

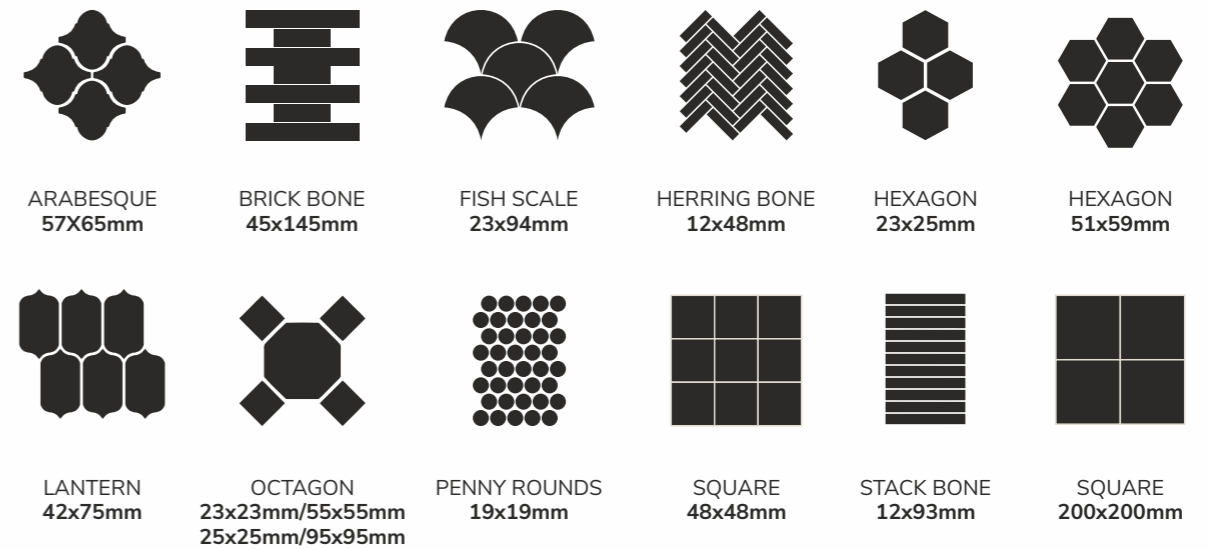
The collection is available in Matt and Glossy surfaces, with select designs enhanced by special effects such as shine and carving, applied according to the suitability of each design series. Manufactured using advanced GVT (Glazed Vitrified Tile) technology, Fresco is suitable for a wide range of applications including kitchens, floors, bedrooms, bathrooms, balconies, cafes, restaurant and feature areas.

Designed to complement its surrounding environment, Fresco empowers architects and designers to define themes, highlight spaces, and decorate interiors with refined artistic expression.

Crafted art for inspired spaces.

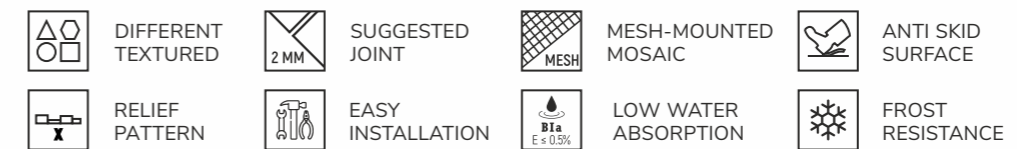
# FRESCO

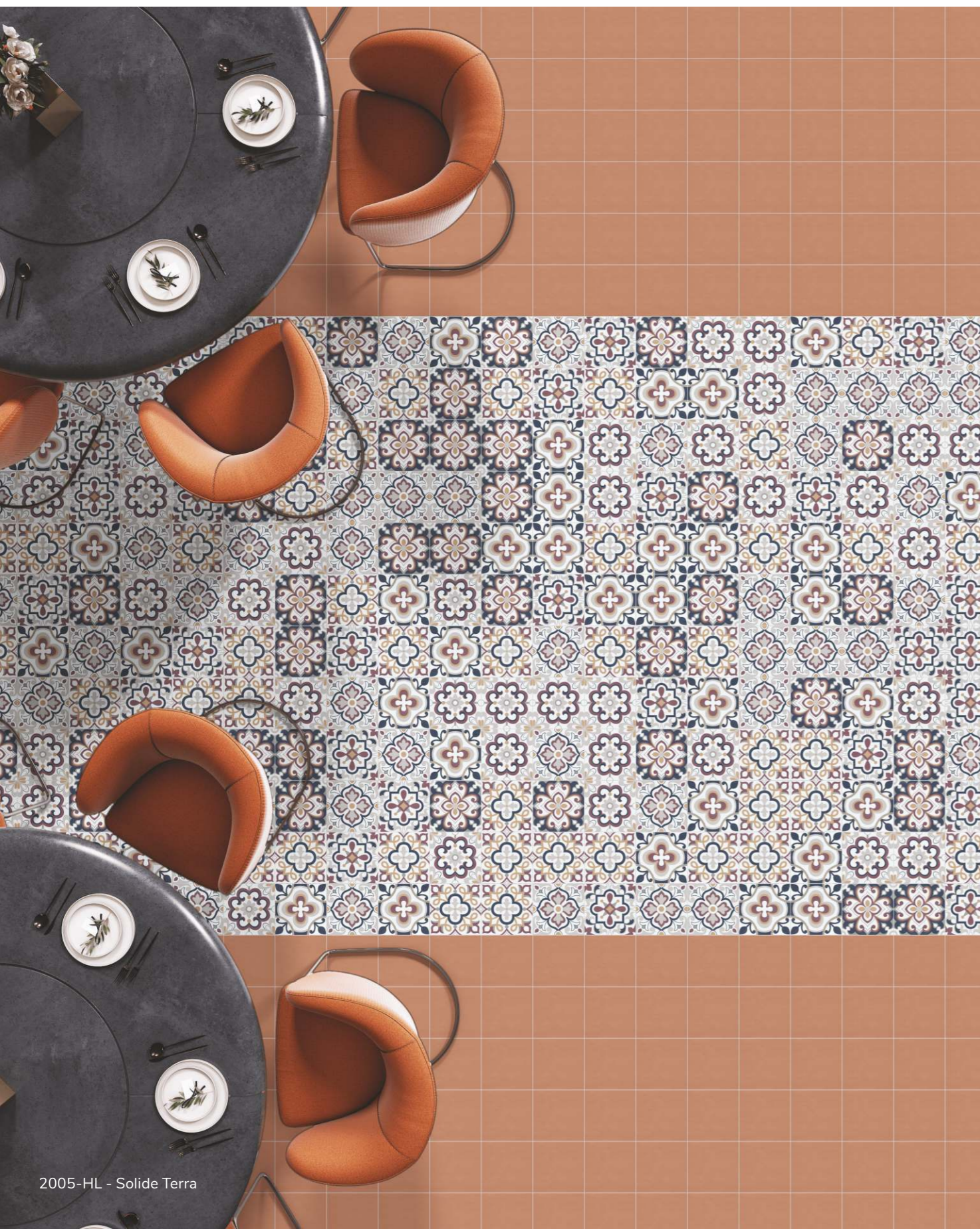
Discover a versatile collection of wall tiles with infinite possibilities in designs, formats and elegant patterns. Add character to your wall with the vivid tones and textures of tiles.



The vivid patterns add charm to any wall and the classy features add versatility. The different textures give walls an all-new definition of elegance, add accent details and artistic components. The Fresco collection depict the authentic allure of the wall while connecting the emotions.

## TILE FEATURES





2005-HL - Solide Terra



2001-HL  
 Random 06

Solide Nevy



2005-HL  
 Random 06

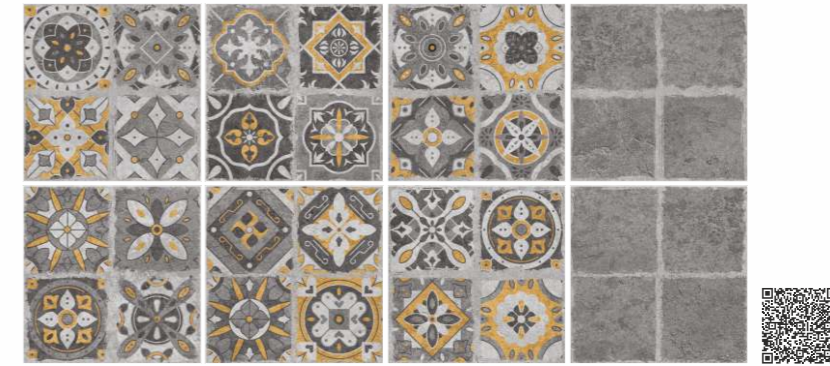
Solide Terra



2017-HL  
 Random 06

2017-LT  
 Random 06





2016-HL  
 Random 06

2016-DK  
 Random 06



2013-HL  
 Random 06

2013-LT

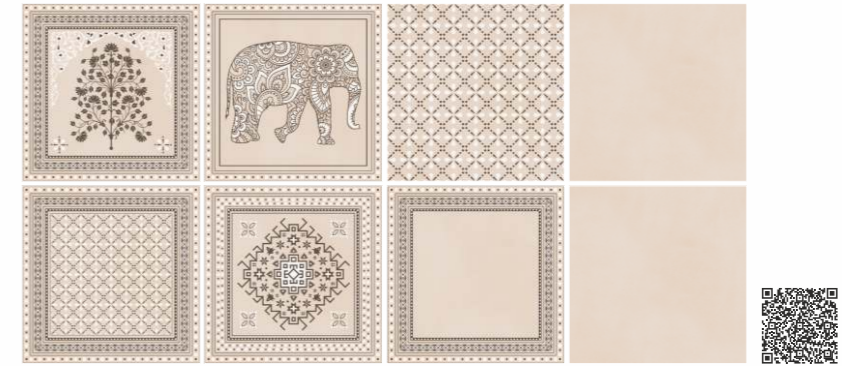


2021-HL  
 Random 06

2021-LT  
 Random 06

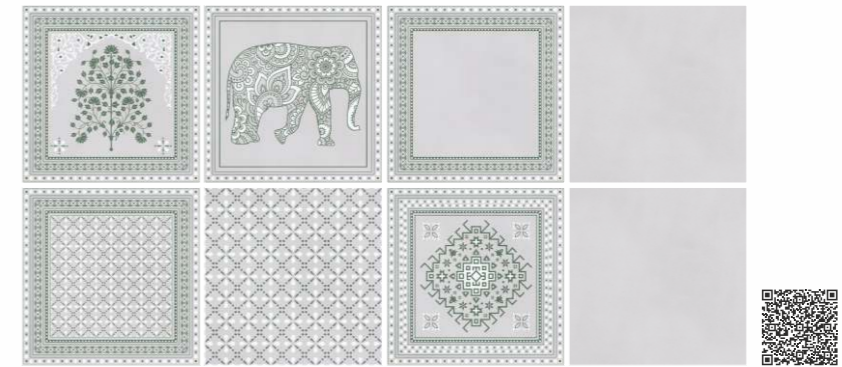


2027-HL - 2027-LT



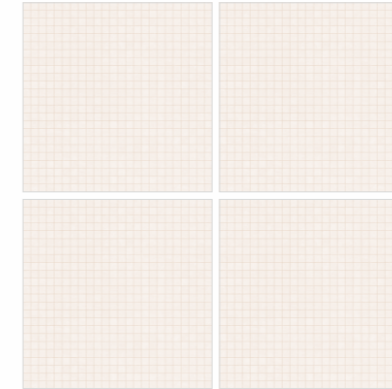
2027-HL  
Random 06

2027-LT

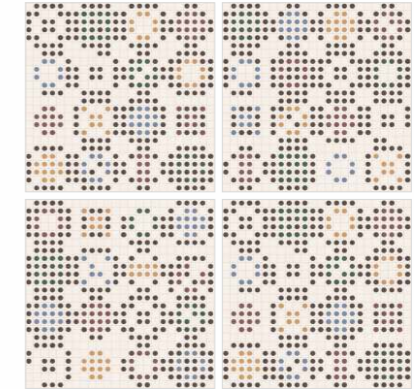


2028-HL  
Random 06

2028-LT



2032-LT



2032-HL

Random 03



2064-LT

Random 02

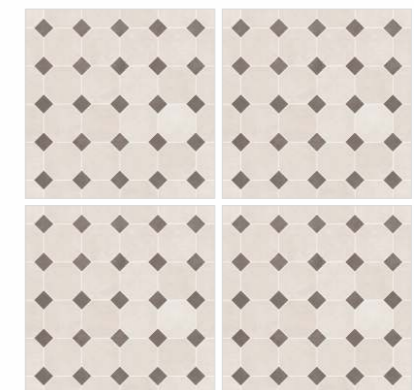


2064-HL



2061-LT

Random 02



2061-HL

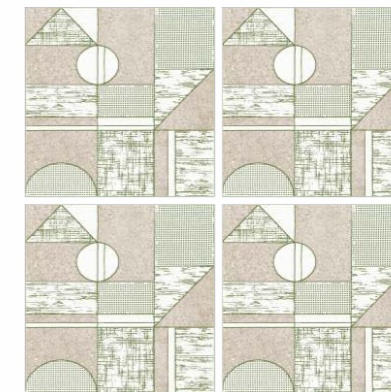




2071-HL



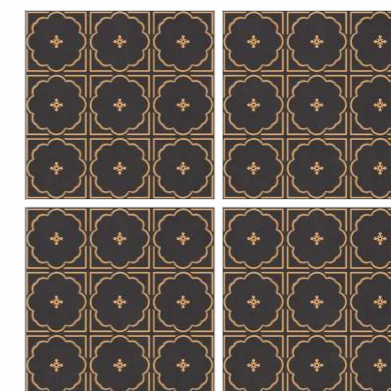
Solide Musk



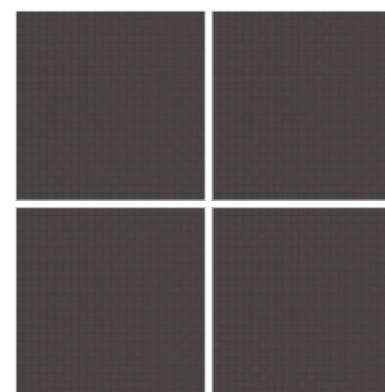
2074-HL



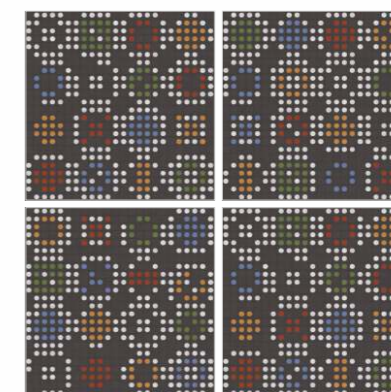
Solide Cumin



2071-HL



2031-DK



2031-HL  
 Random 03

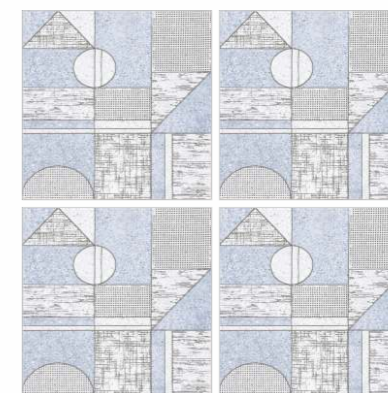




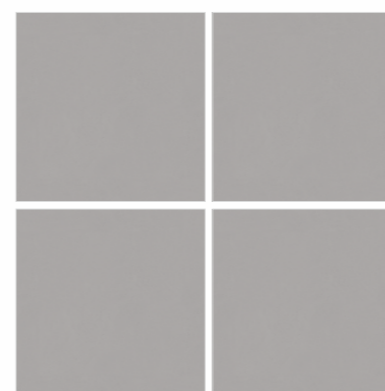
2060-HL - 2060-LT



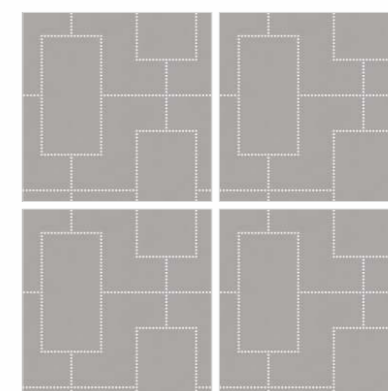
Solide Saline



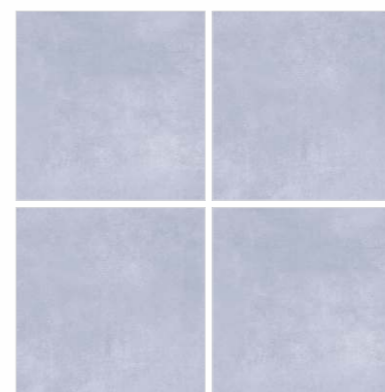
2076-HL



2054-LT

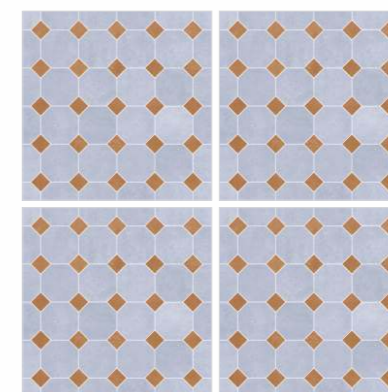


2054-HL



2060-LT

Random 02



2060-HL





2034-HL - 2034-LT



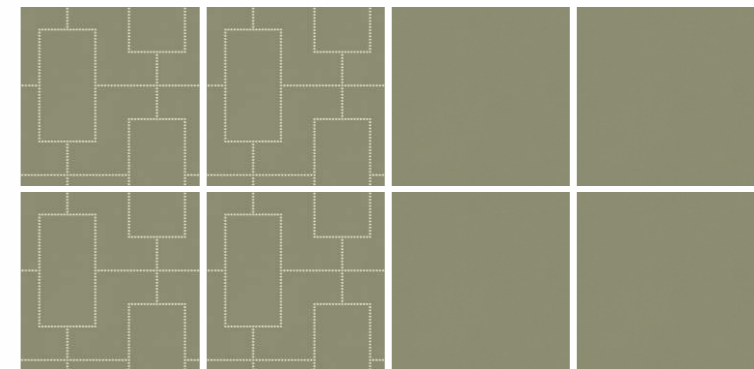
2034-HL  
 Random 09

2034-LT  
 Random 09



2026-HL  
 Random 04

2026-LT  
 Random 04



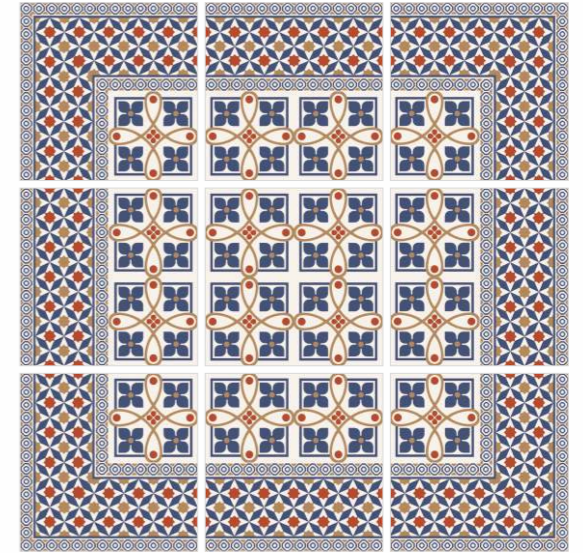
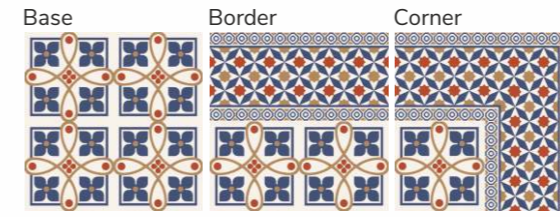
2052-HL

2052-LT

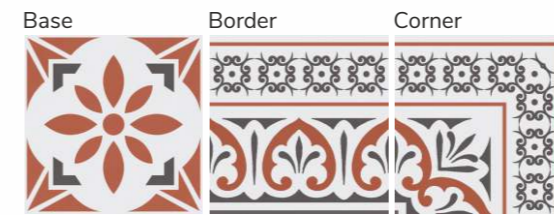




2042-HL



2037-HL

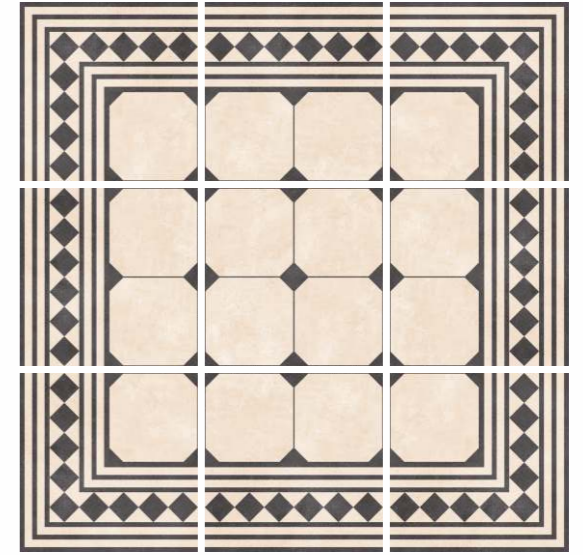
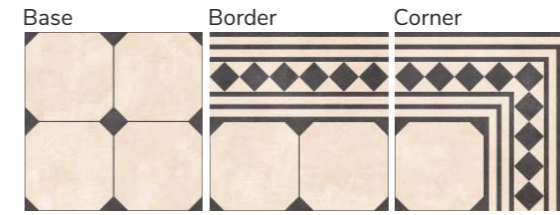


2042-HL





2038-HL

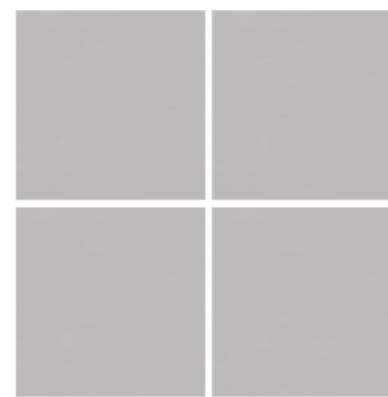


2038-HL

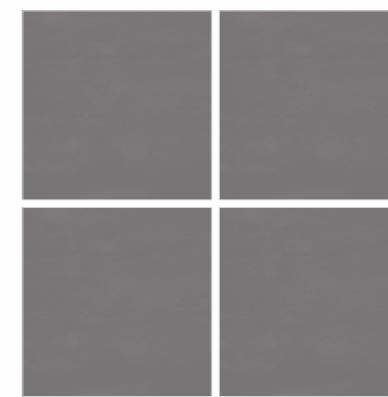


2043-HL





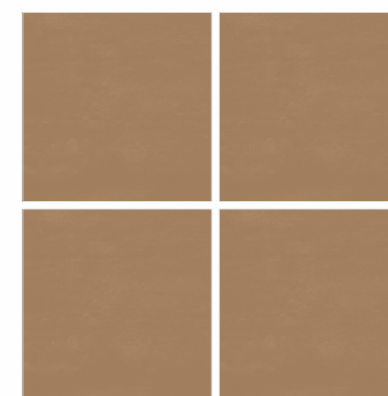
Solide Saline



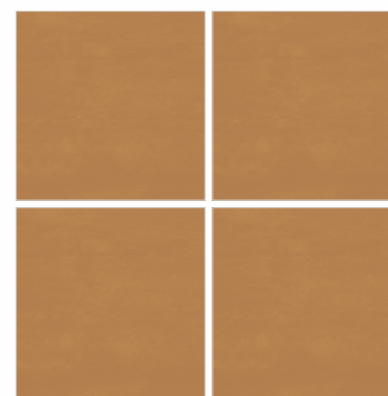
Solide Greek



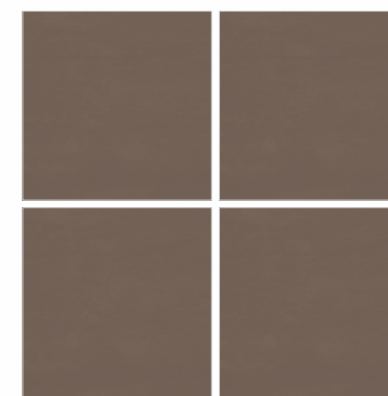
Solide Musk



Solide Cumin



Solide Tango

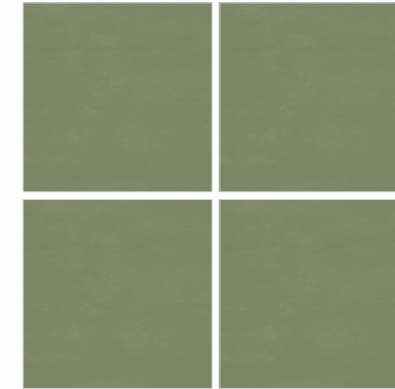


Solide Coco

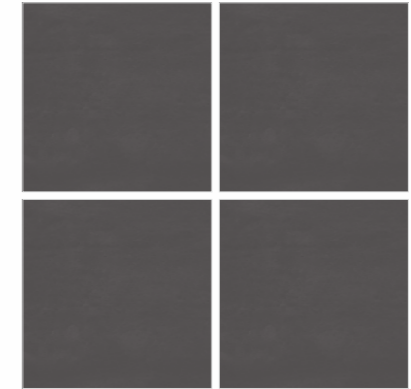




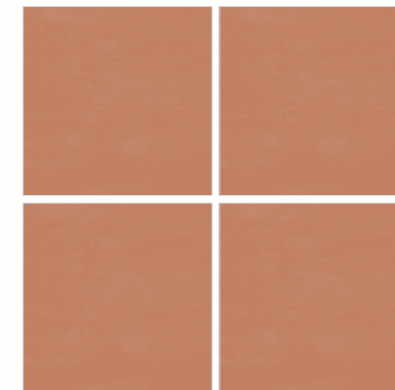
Solide Terra



Solide Leaf



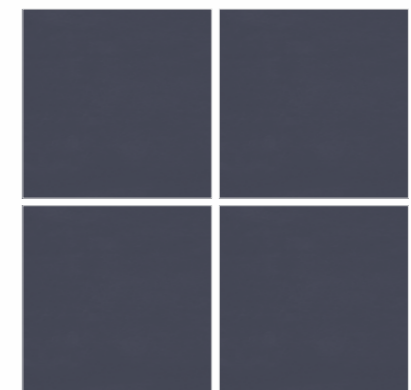
Solide Pepe



Solide Terra



Solide Teal

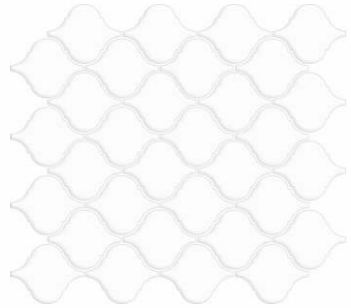


Solide Nevy

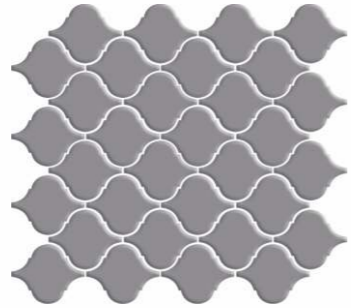


**ARABESQUE**  
*Series*

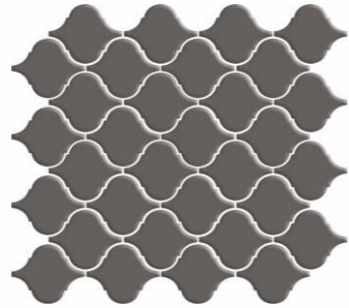
Chips Size: 57x65mm | Sheet Size: 260x265mm | Spacer: 2mm | Surface: Glossy/Matt | Cov. Per Sheet: 0.74 Sq. Feet



FL G3051 (Glossy)  
FL M3051 (Matt)



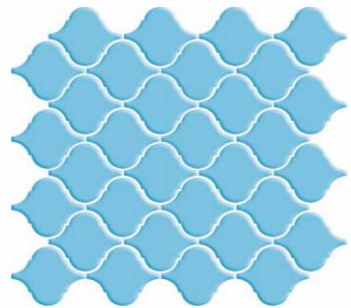
FL G3056 (Glossy)



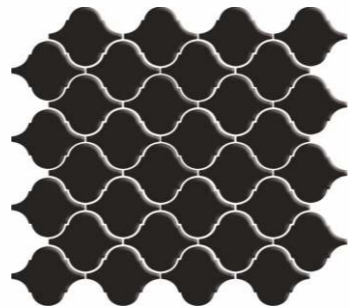
FL M3054 (Matt)



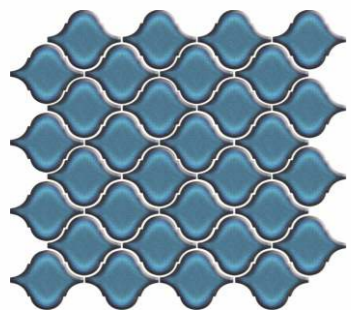
FL M3050 (Matt)



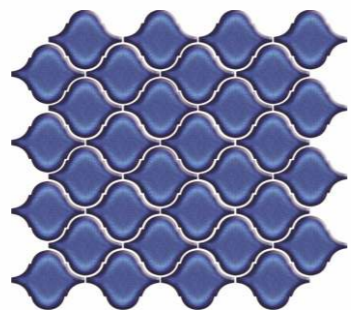
FL G3010 (Glossy)



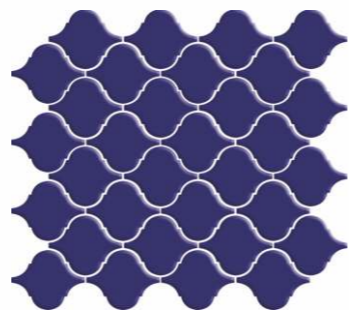
FL G3049 (Glossy)  
FL M3049 (Matt)



FL VR3001 (Glossy)



FL VR3006 (Glossy)

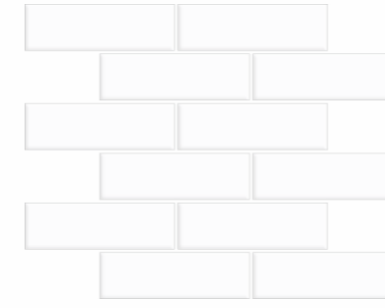


FL G3001 (Glossy)

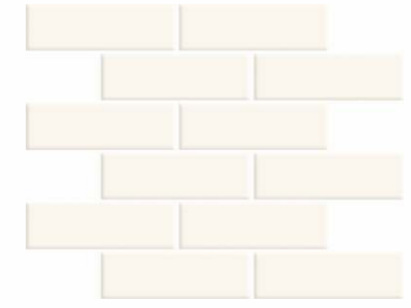


**BRICK BONE**  
*Series*

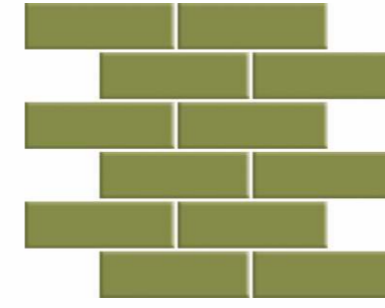
Chips Size: 45x145mm | Sheet Size: 300x290mm | Spacer: 3mm | Surface: Glossy/Matt | Cov. Per Sheet: 0.94 Sq. Feet



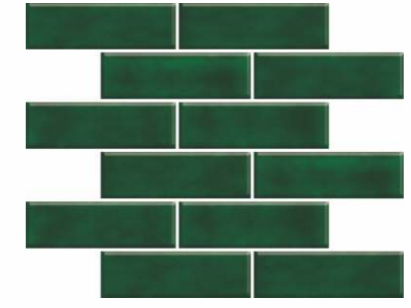
FL G0951 (Glossy)  
FL M0951 (Matt)



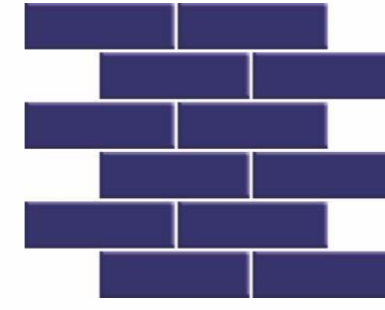
FL G0950 (Glossy)



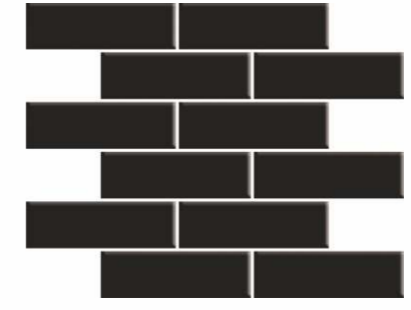
FL G0925 (Glossy)



FL CR0921 (Glossy)



FL G0901 (Glossy)

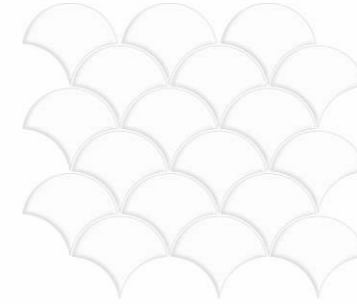


FL G0949 (Glossy)  
FL M0949 (Matt)

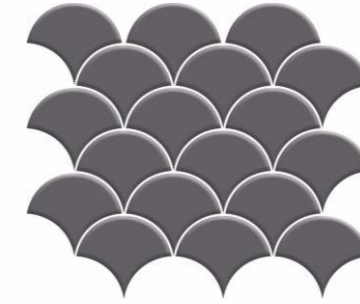




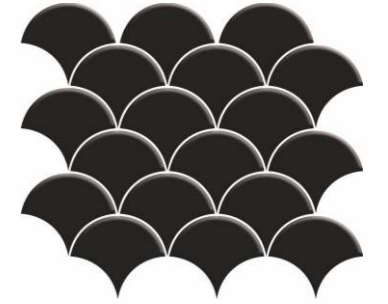
FL G3466



FL G3451 (Glossy)  
 FL M3451 (Matt)



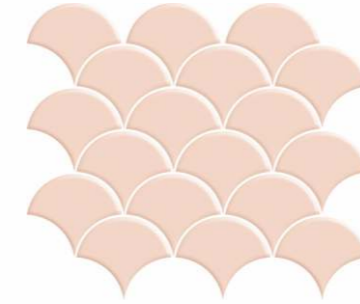
FL G3452 (Glossy)



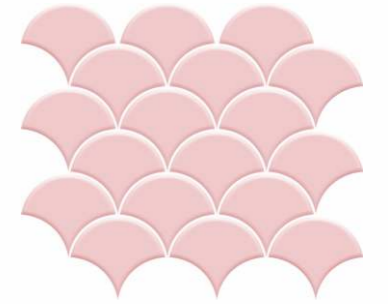
FL G3449 (Glossy)  
 FL M3449 (Matt)



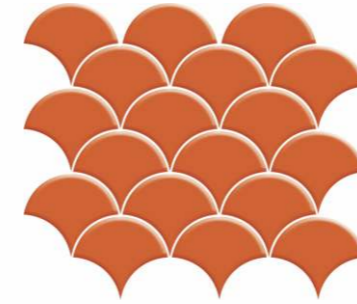
FL G3450 (Glossy)



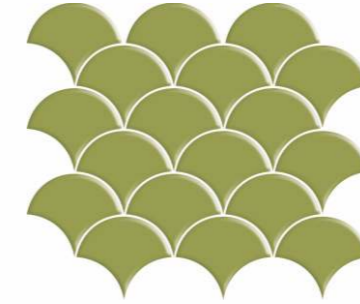
FL M3464 (Matt)



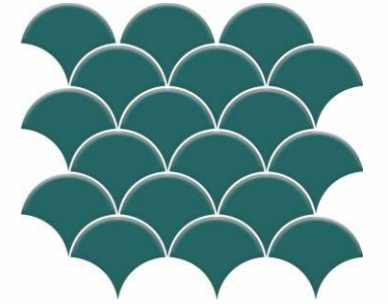
FL G3468 (Glossy)



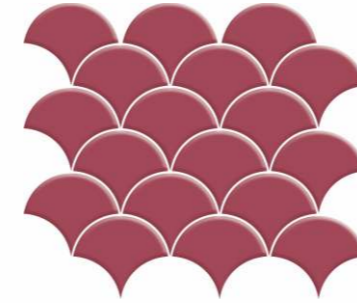
FL M3461 (Matt)



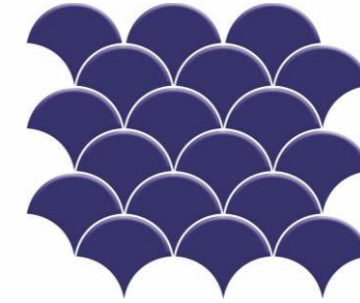
FL G3425 (Glossy)



FL G3413 (Glossy)



FL G3466 (Glossy)

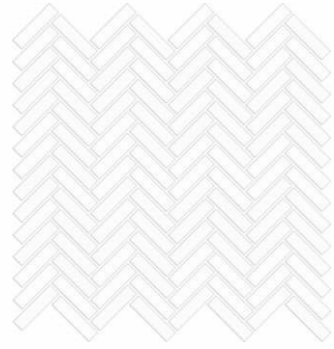


FL G3401 (Glossy)



**HERRING-BONE**  
*Series*

Chips Size: 12x48mm | Sheet Size: 275x282mm | Spacer: 2mm | Surface: Glossy/Matt | Cov. Per Sheet: 0.83 Sq. Feet



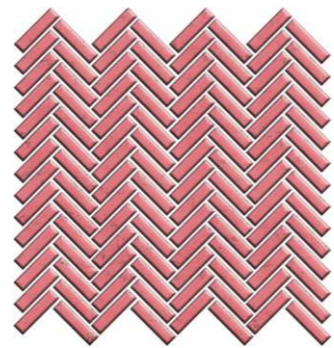
FL G1251 (Glossy)  
FL M1251 (Matt)



FL VRHB1216 (Glossy)



FL VRHB1212 (Glossy)



FL VRHB1211 (Glossy)

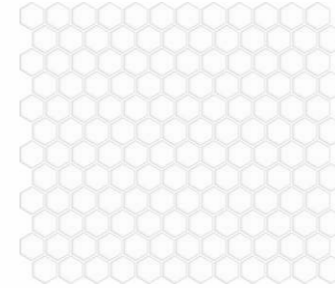


FL G1249 (Glossy)  
FL M1249 (Matt)

**HEXAGON**  
*Series*

Chips Size: 23x25mm | Sheet Size: 255x295mm | Spacer: 1.7mm | Surface: Glossy/Matt | Cov. Per Sheet: 0.81 Sq. Feet

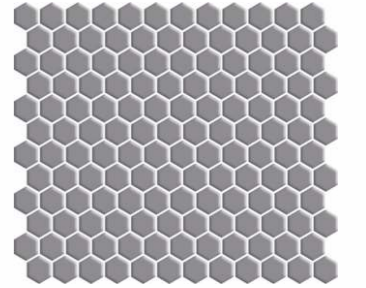
**FRESCO**



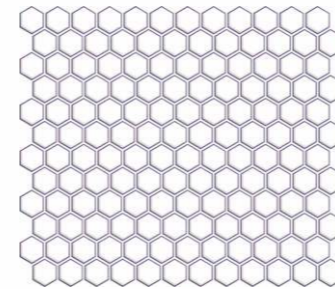
FL G1651 (Glossy)  
FL M1651 (Matt)



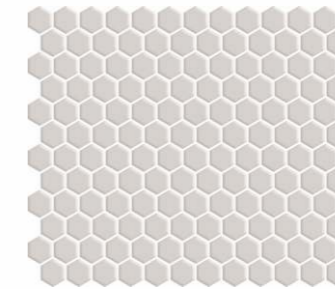
FL M1659 (Matt)



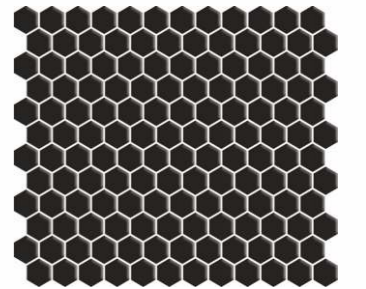
FL M1656 (Matt)



FL RM1610 (Glossy)



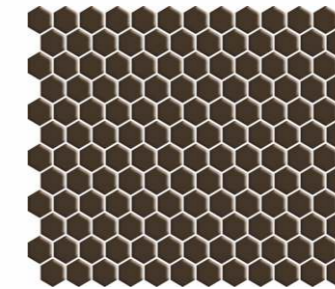
FL M1640 (Matt)



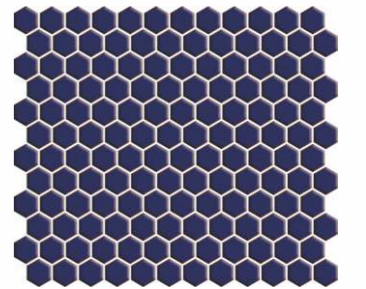
FL G1649 (Glossy)  
FL M1649 (Matt)



FL M1650 (Matt)



FL M1637 (Matt)



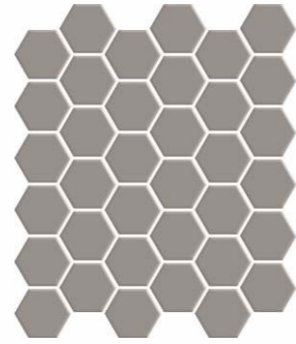
FL RM1603 (Glossy)

**HEXAGON Series**

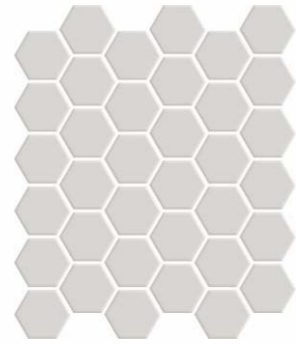
Chips Size: 51x59mm | Sheet Size: 277x322mm | Spacer: 3mm | Surface: Glossy/Matt | Cov. Per Sheet: 0.96 Sq. Feet



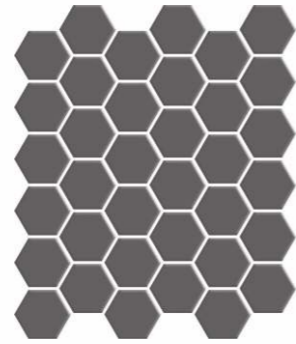
FL G1751 (Glossy)  
FL M1751 (Matt)



FL M17104 (Matt)



FL G17102 (Glossy)  
FL M17102 (Matt)



FL G1794 (Glossy)  
FL M1794 (Matt)



FL M17106 (Matt)

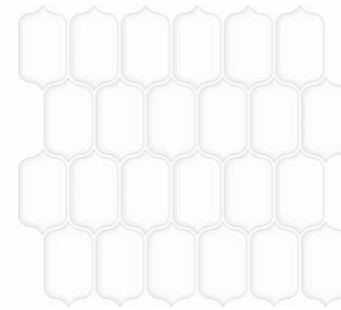


FL G1749 (Glossy)  
FL M1749 (Matt)

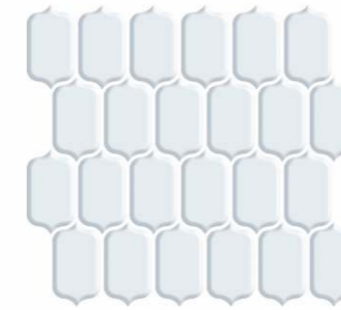


**LANTERN Series**

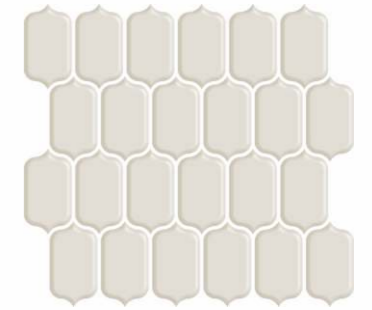
Chips Size: 42x75mm | Sheet Size: 265x260mm | Spacer: 3mm | Surface: Glossy/Matt | Cov. Per Sheet: 0.74 Sq. Feet



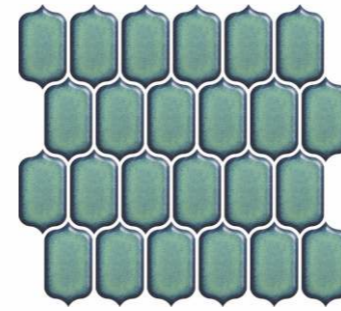
FL G3151 (Glossy)  
FL M3151 (Matt)



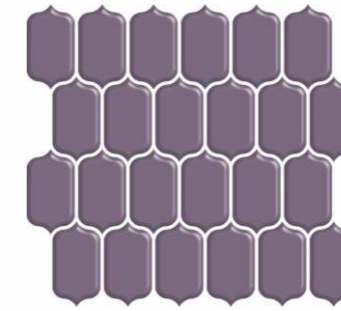
FL G3159 (Glossy)



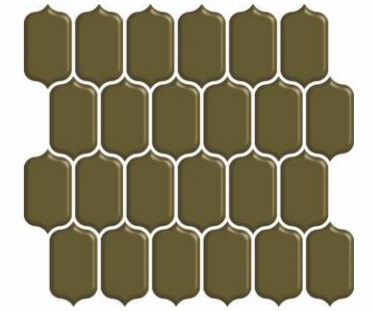
FL G3140 (Glossy)



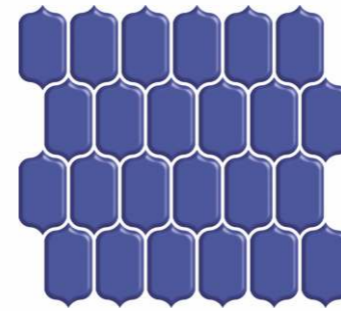
FL VR3101 (Glossy)



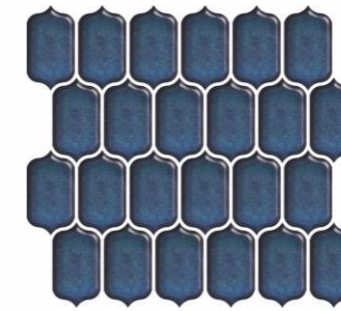
FL M3171 (Matt)



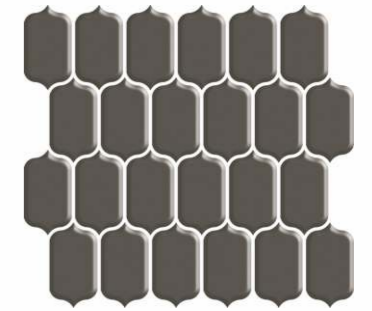
FL G3129 (Glossy)



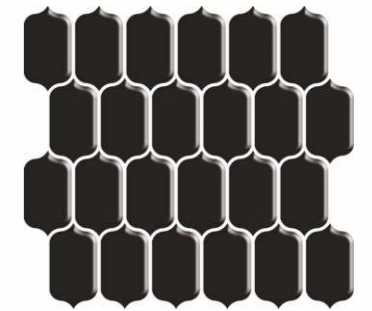
FL G3107 (Glossy)



FL VR3103 (Glossy)



FL G3195 (Glossy)

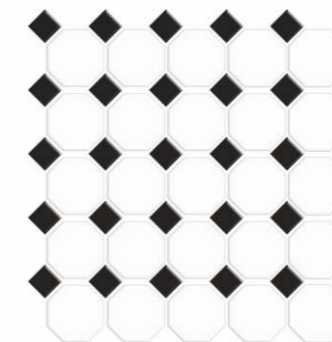


FL G3149 (Glossy)  
FL M3149 (Matt)





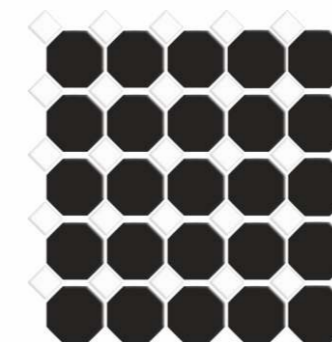
FL MX274951



FL GX274951 (Glossy)  
 FL MX274951 (Matt)

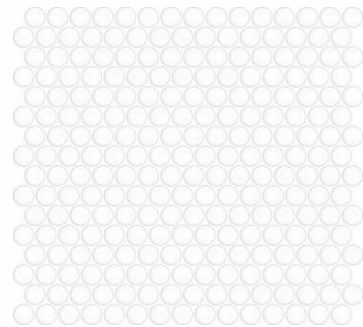


FL MX284951 (Matt)

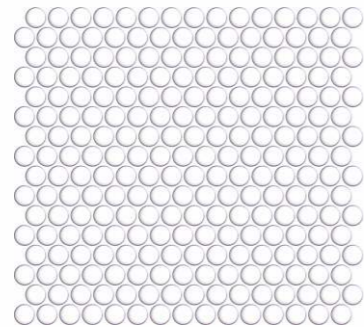


FL GX275149 (Glossy)  
 FL MX275149 (Matt)

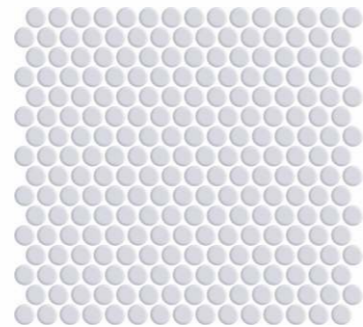




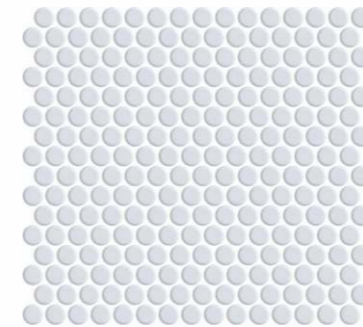
FL G1451 (Glossy)  
 FL M1451 (Matt)



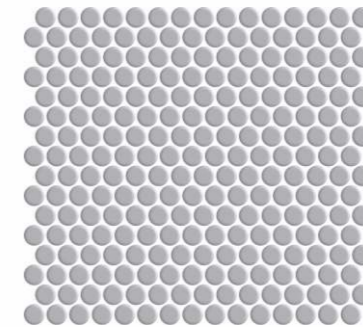
FL RM1410 (Glossy)



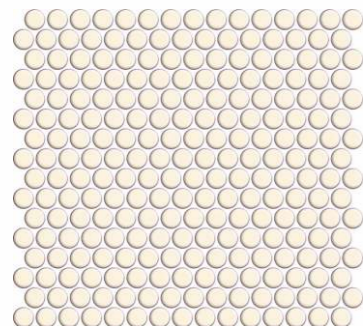
FL M1459 (Matt)



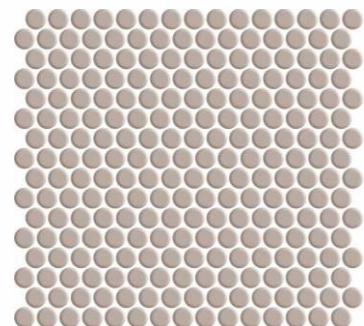
FL RM1408 (Glossy)



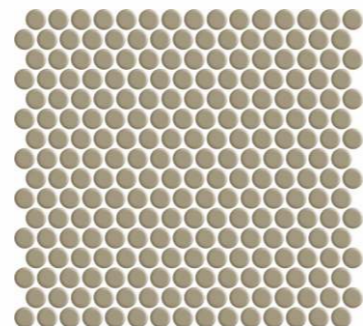
FL M1458 (Matt)



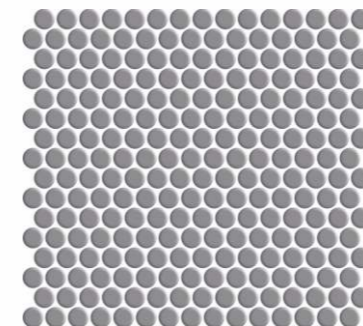
FL RM1406 (Glossy)



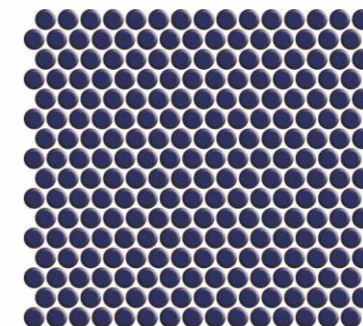
FL M1442 (Matt)



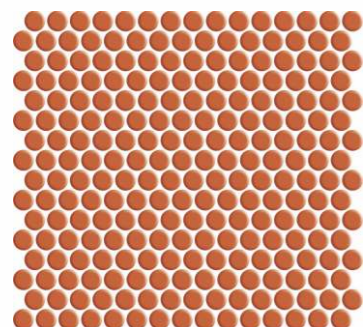
FL M1482 (Matt)



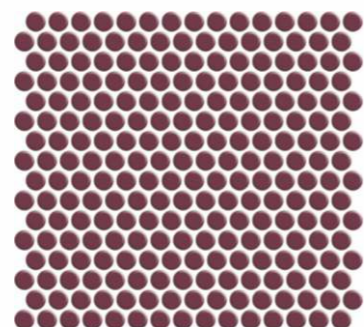
FL M1456 (Matt)



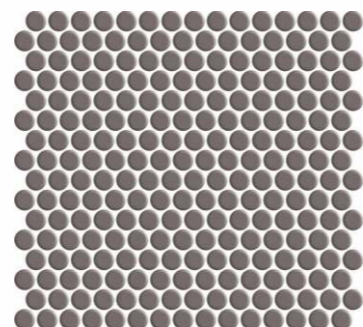
FL RM1403 (Glossy)



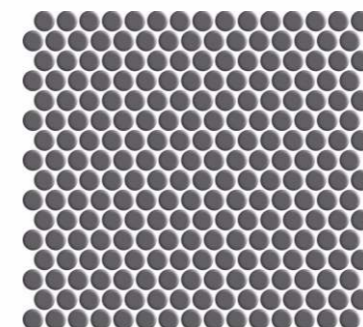
FL G1462 (Glossy)



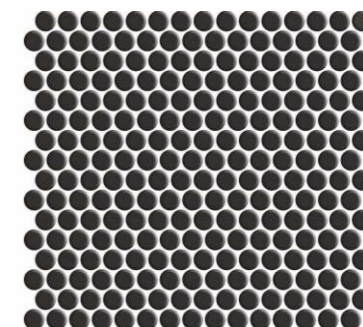
FL RM1401 (Glossy)



FL M1454 (Matt)

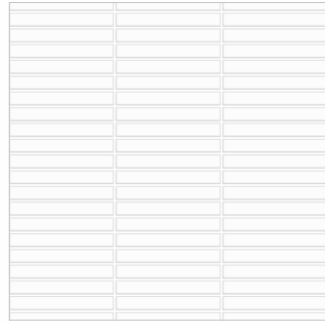


FL G1452 (Glossy)

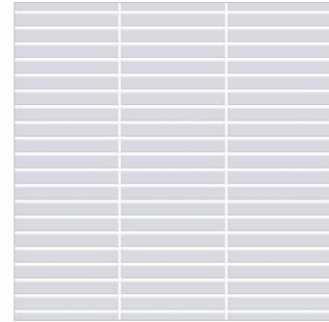


FL G1449 (Glossy)  
 FL M1449 (Matt)

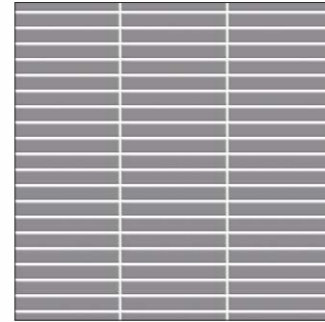




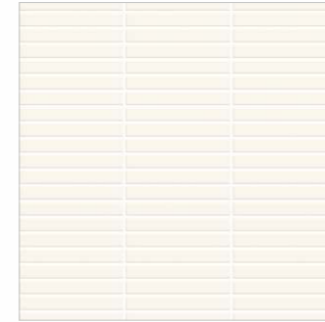
FL G1051 (Glossy)  
FL M1051 (Matt)



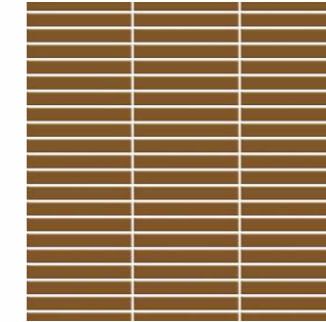
FL G1059 (Glossy)



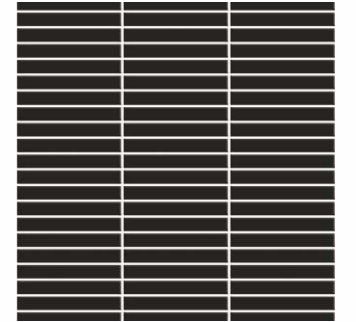
FL G1052 (Glossy)



FL G1050 (Glossy)



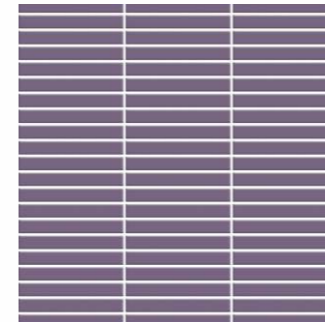
FL G1084 (Glossy)



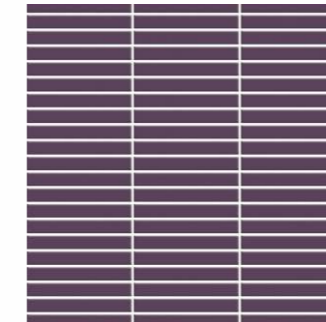
FL G1049 (Glossy)  
FL M1049 (Matt)



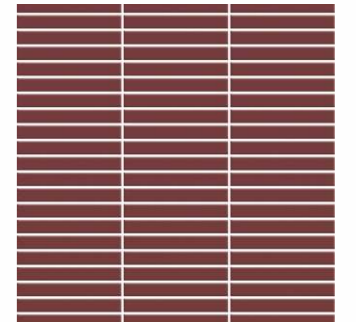
FL MSP1007



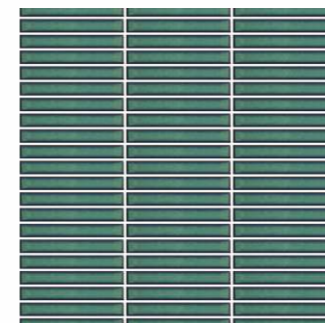
FL M1071 (Matt)



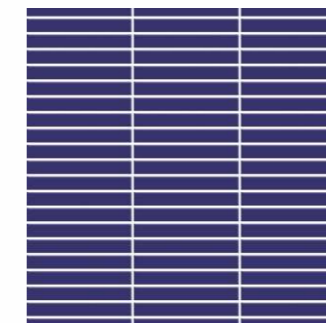
FL M1069 (Matt)



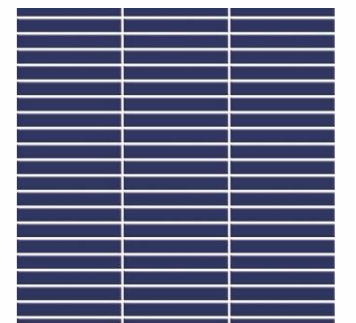
FL G1085 (Glossy)



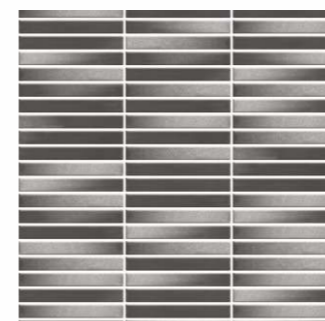
FL VRSB1001 (Glossy)



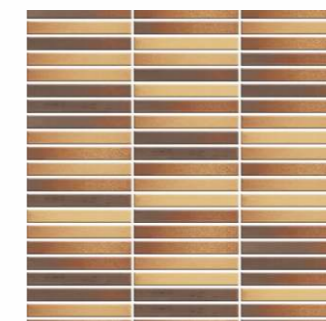
FL G1001 (Glossy)



FL M1004 (Matt)



FL GSP1005 (Glossy)

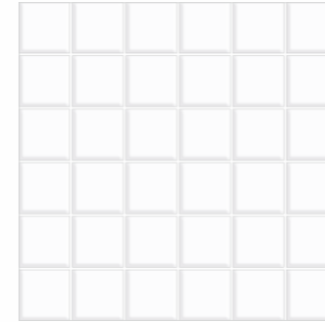


FL MSP1007 (Matt)

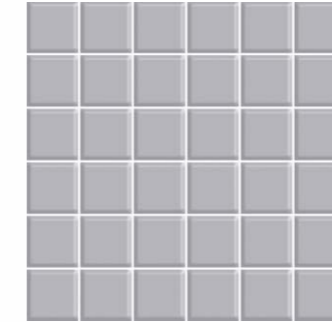




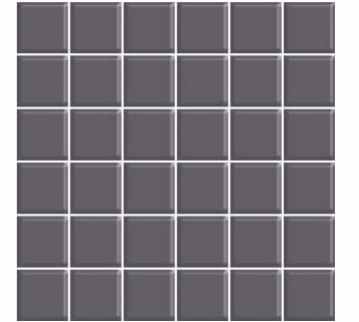
FL G0248



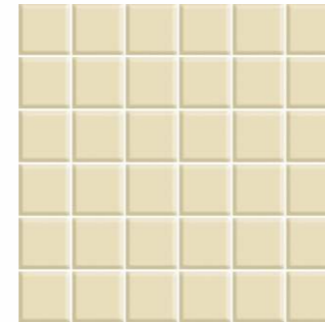
FL G0251 (Glossy)  
FL M0251 (Matt)



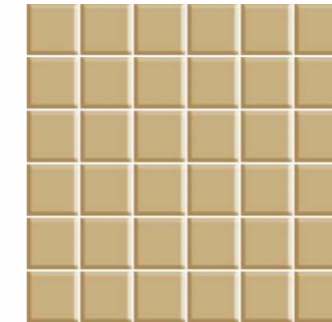
FL G0258 (Glossy)  
FL M0258 (Matt)



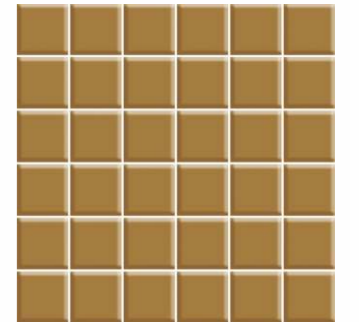
FL G0252 (Glossy)  
FL M0252 (Matt)



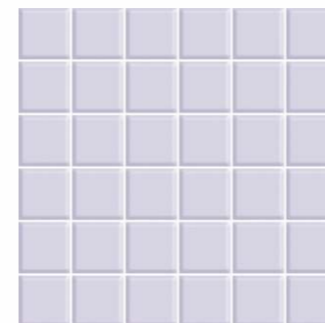
FL G0248 (Glossy)  
FL M0248 (Matt)



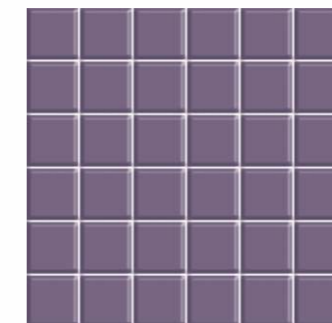
FL G0247 (Glossy)  
FL M0247 (Matt)



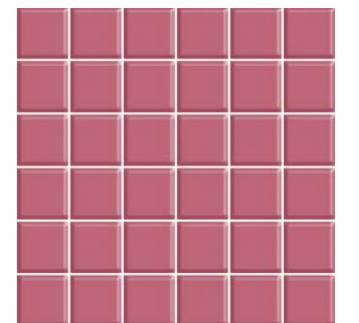
FL G0246 (Glossy)  
FL M0246 (Matt)



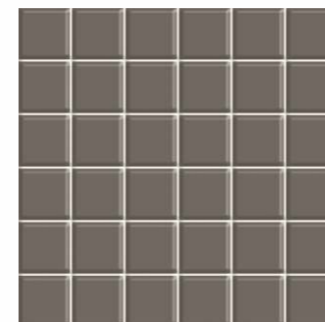
FL G0272 (Glossy)  
FL M0272 (Matt)



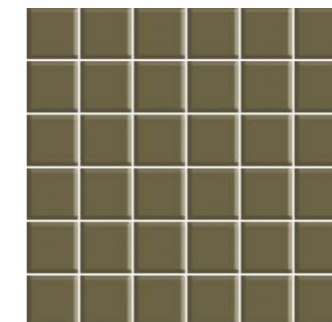
FL G0271 (Glossy)  
FL M0271 (Matt)



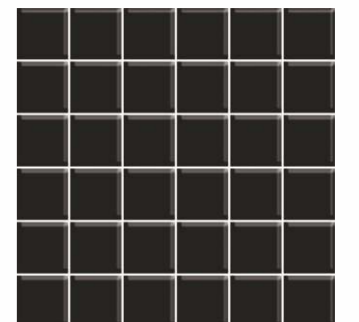
FL G0267 (Glossy)  
FL M0267 (Matt)



FL G0255 (Glossy)  
FL M0255 (Matt)

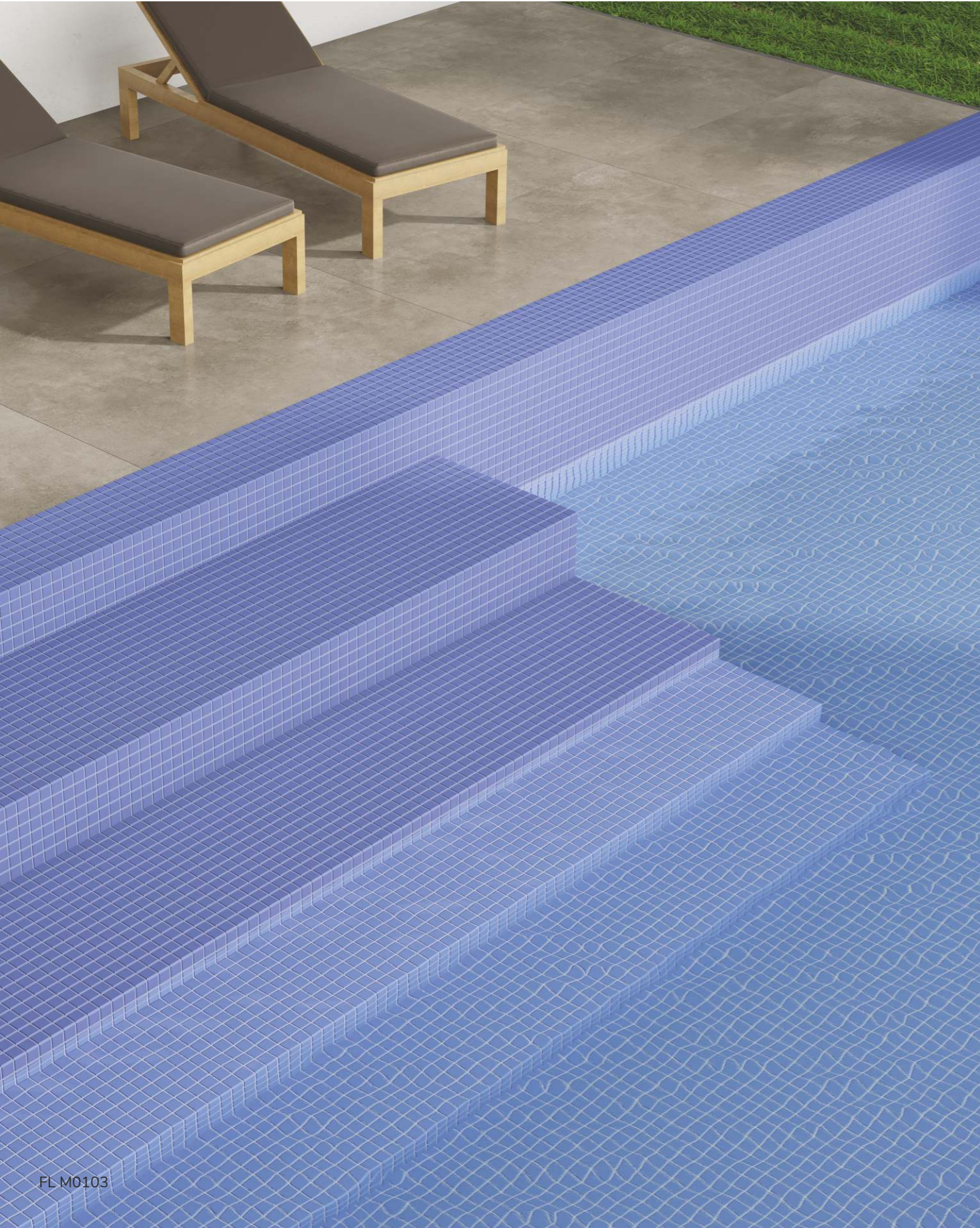


FL G0229 (Glossy)  
FL M0229 (Matt)

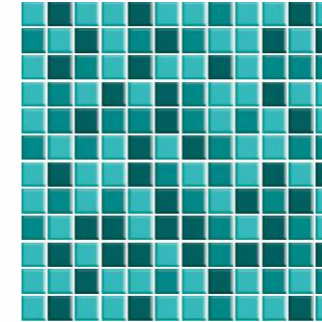


FL G0249 (Glossy)  
FL M0249 (Matt)

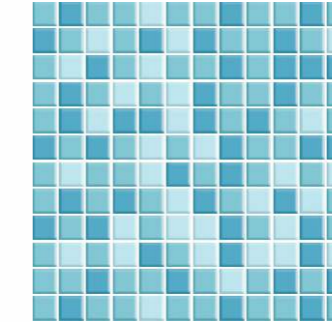




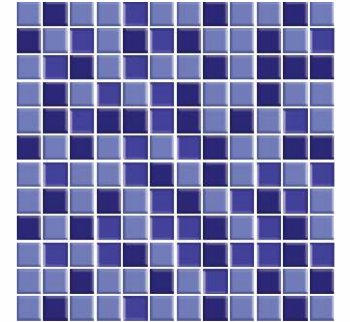
FL M0103



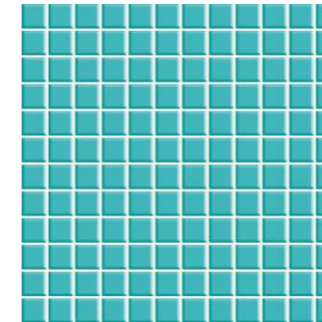
FL G01 131415  
 (Glossy)



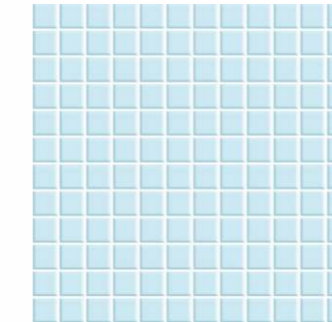
FL G01 101112  
 (Glossy)



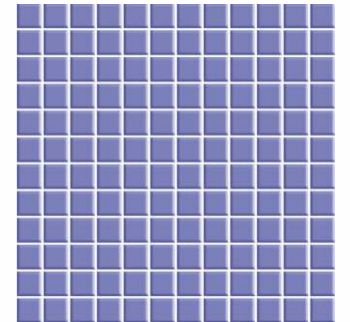
FL G01 010203 (Glossy)  
 FL M01 010203 (Matt)



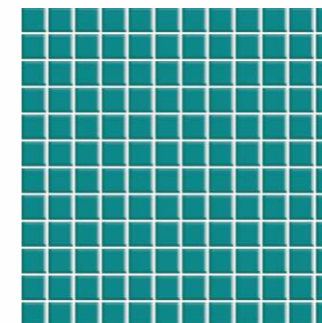
FL G0115 (Glossy)



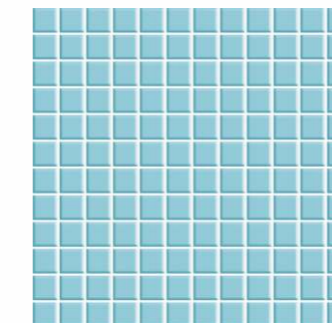
FL G0112 (Glossy)



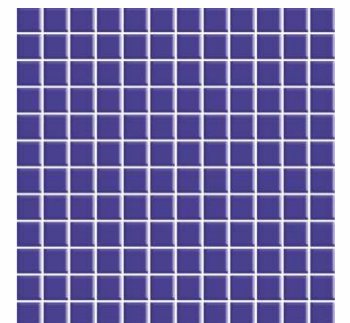
FL G0103 (Glossy)  
 FL M0103 (Matt)



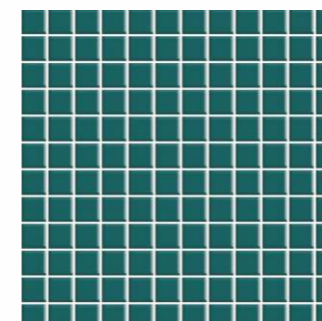
FL G0114 (Glossy)



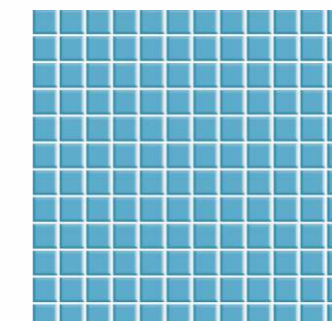
FL G0111 (Glossy)



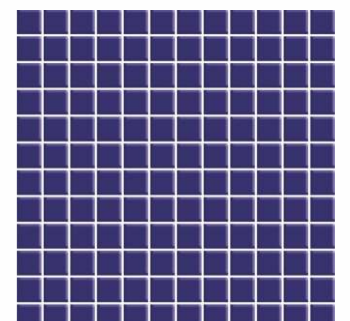
FL G0102 (Glossy)  
 FL M0102 (Matt)



FL G0113 (Glossy)



FL G0110 (Glossy)

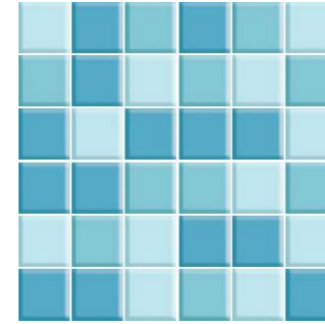


FL G0101 (Glossy)  
 FL M0101 (Matt)

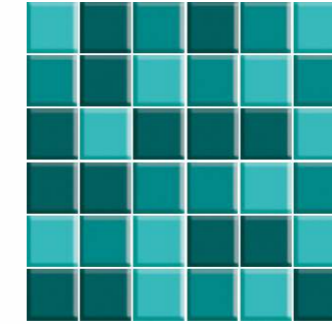





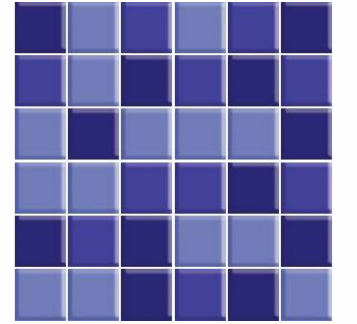
FL G0210




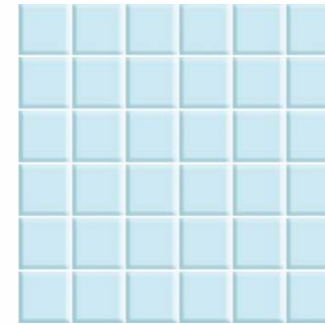
FL G02 101112 (Glossy)   
FL M02 101112 (Matt)



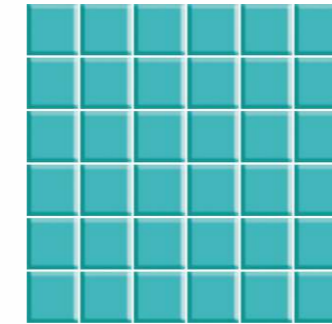
FL G02 131415 (Glossy)   
FL M02 131415 (Matt)



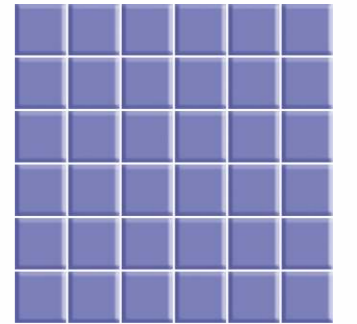
FL G02 010203 (Glossy)   
FL M02 010203 (Matt)



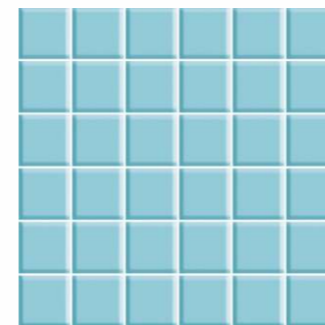
FL G0212 (Glossy)   
FL M0212 (Matt)



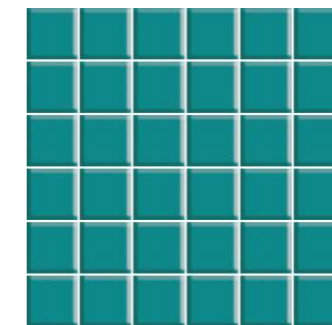
FL G0215 (Glossy)   
FL M0215 (Matt)



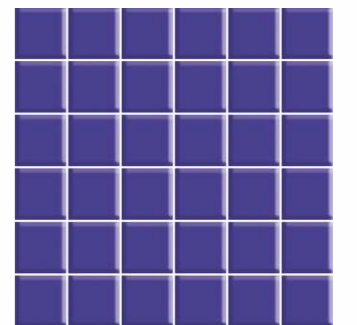
FL G0203 (Glossy)   
FL M0203 (Matt)



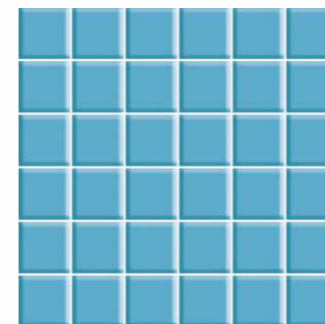
FL G0211 (Glossy)   
FL M0211 (Matt)



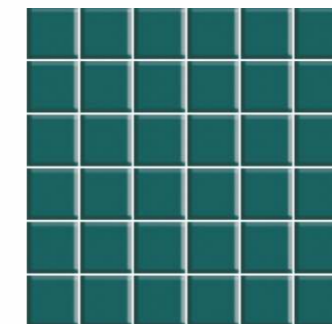
FL G0214 (Glossy)   
FL M0214 (Matt)



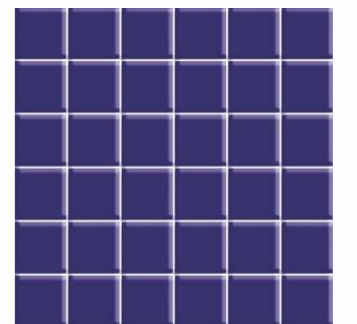
FL G0202 (Glossy)   
FL M0202 (Matt)



FL G0210 (Glossy)   
FL M0210 (Matt)



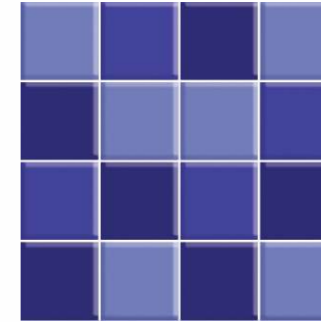
FL G0213 (Glossy)   
FL M0213 (Matt)



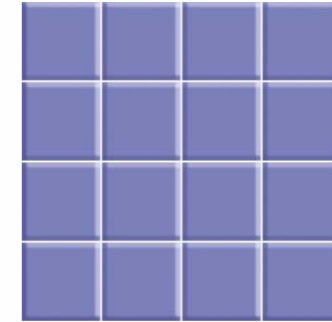
FL G0201 (Glossy)   
FL M0201 (Matt)



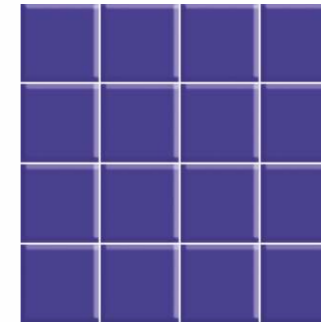
FL G0302



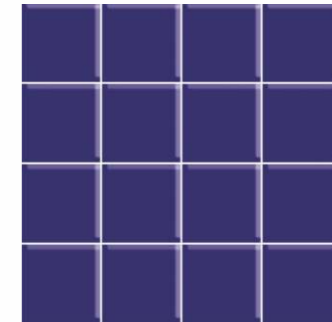
FL G03 010203 (Glossy)  
FL M03 010203 (Matt)



FL G0303 (Glossy)  
FL M0303 (Matt)



FL G0302 (Glossy)  
FL M0302 (Matt)

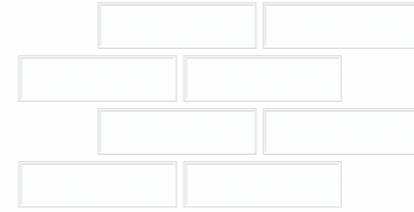


FL G0301 (Glossy)  
FL M0301 (Matt)

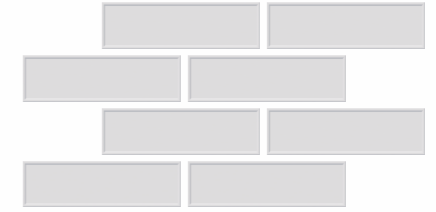




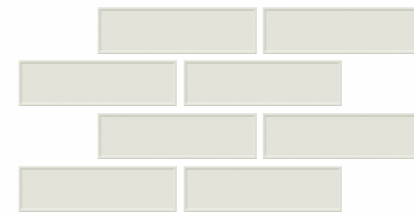
FS-Shl.White



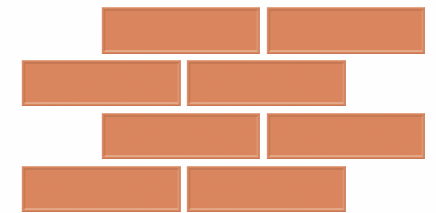
FS Shl White



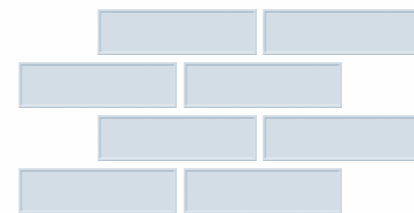
FS Shl Pewter



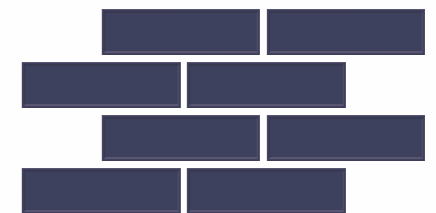
FS Shl Mashroom



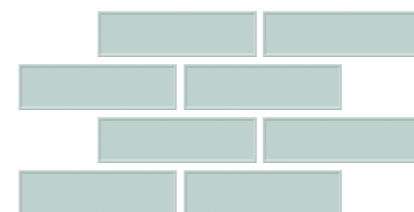
FS Shl Peach



FS Shl Ash Blue



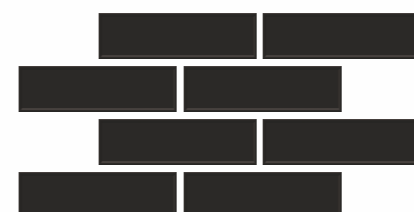
FS Shl Navy Blue



FS Shl Jade



FS Shl Graffity



FS Shl Black





FS Clo Navy Blue



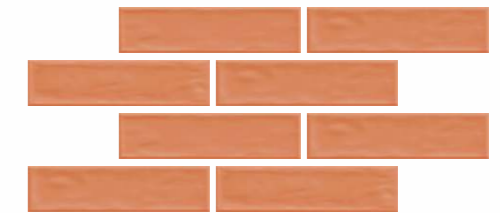
FS Clo White  
 Random 04



FS Clo Pewter  
 Random 04



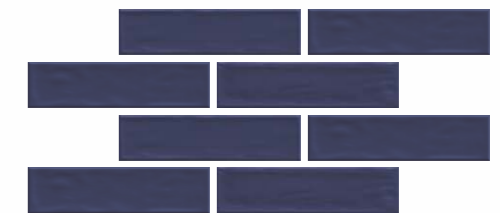
FS Clo Mushroom  
 Random 04



FS Clo Peach  
 Random 04



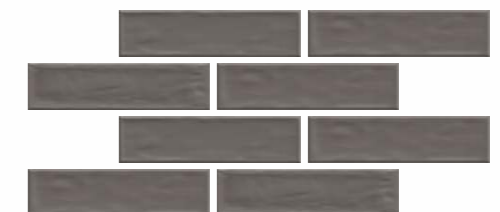
FS Clo Ash Blue  
 Random 04



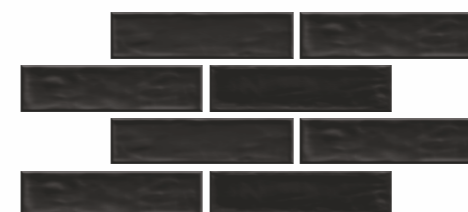
FS Clo Navy Blue  
 Random 04



FS Clo Jade  
 Random 04



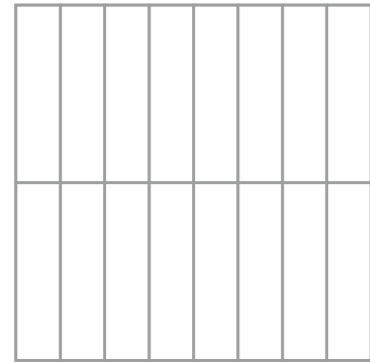
FS Clo Graffiti  
 Random 04



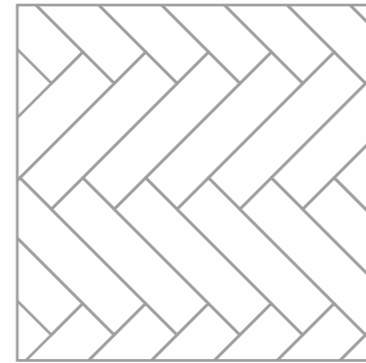
FS Clo Black  
 Random 04



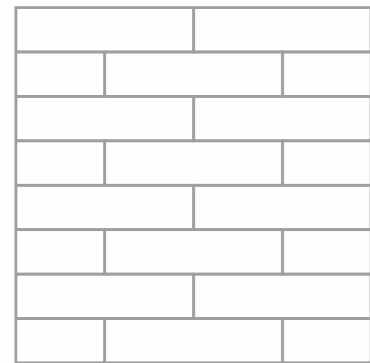
**TILE LAYING PATTERNS**



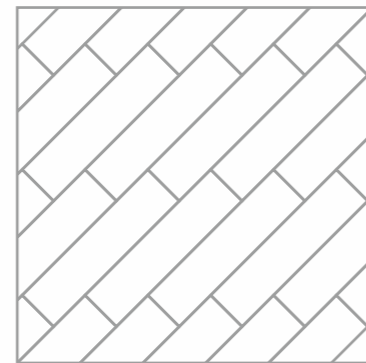
Pattern 01



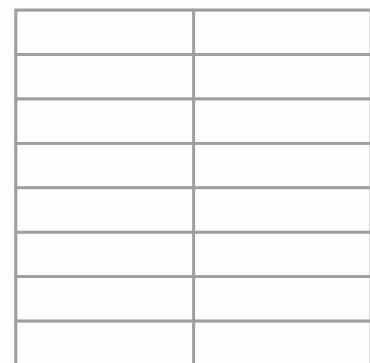
Pattern 02



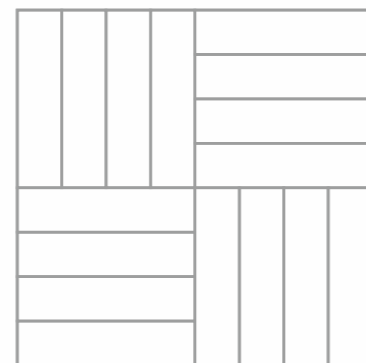
Pattern 03



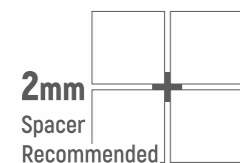
Pattern 04



Pattern 05



Pattern 06



Note :  
2 mm Spacers / Grouting with  
Leveling system Recommended.

**NOTES &  
RECOMMENDATION**

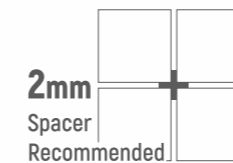
**NOTES**

- All Technical Specifications in This Catalogue are for Premium Grade Material only.
- SHADE/SIZE VARIATION are inherent characteristics to ceramics. Certain products purposely have variations which are part of design & process. The same have been indicated.
- It is recommended to blend tiles by mixing tiles from various boxes & check for natural hue before fixing the tiles.
- It is recommended to check the tiles before laying/fixing. Quality standards cover 1st/Premium Quality only.
- Company's liability is limited on material that has not been laid.
- NO COMPLAINT SHALL BE ENTERTAINED ON TILES ALREADY FIXED/LAID.
- The liability is also limited to the material supplied by the company; no other claim is entertained under any circumstances.
- No complaint is entertained on decoration done on tiles. other than the ones done by Asian Granito India Ltd.

GENERAL NOTE: Any complaint must be brought to the company's notice within 10 days of purchase & before fixing of tiles.

**How to avoid defects & complaints:**

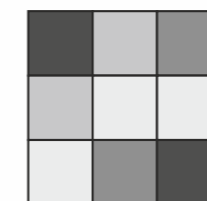
- Use Premium Quality Tiles
- Select tile sizes that are adaptable to the space, prioritizing the area dimensions rather than just the intended use.
- Avoid careless laying of Tiles
- Avoid poor maintenance for instance, by cleaning with strong chemicals or with abrasive equipment e.g. metallic scrubber
- Always keep Tiled area clean & ensure dusting/mopping regularly
- Put Doormats/Foot-mats at all strategic locations to avoid loose debris/dust from entering the Tiled area



**List of detergents for removal of stain.**

STAIN (Created by)	Beer	Blood	Calcar	Cement	Cigarette	Soft Drinks	Coffee	Edible Oil	Glue	Ice Cream	Ink	Juices	Marker Ink	Nicotine	Paints	Resin	Rust	Tar	Tea	Turmeric	Wine
SOLVENTS (Turpentine, Acetone, Trichloroety - Line etc.)								•	•		•		•			•		•			
SODIUM HYPO (Chlorite (NaOCL))												•								•	
ACIDS DILUTED (Hydrochloric acid*)			•	•	•						•			•	•		•			•	
ALKALI (Sodium hydroxide/potassium hydroxide)	•	•				•	•			•											•

\*Commercial grade shall not be used



Kindly note that variations in colour and size are natural characteristics of vitrified tiles, resulting from the random design concept and vitrification process. These should not be regarded as manufacturing defects. It is highly recommended to inspect actual tile samples prior to making a final selection. A 2 mm gap must be maintained during installation, and a dry mock installation is advised to ensure precision. Post-installation claims will not be accepted. Catalogue or Digital visuals, product sizes, and colours are indicative and subject to change without prior notice. We take pride in being part of your space and are dedicated to your lasting satisfaction.

**DEGREE OF COLOUR CHANGE** HIGH SHADE AND TEXTURE VARIATION WITHIN EACH CARTON

DISCLAIMER : Asian Granito India Ltd. reserves the right to delete & amend either totally or partially, any of the colors, shapes, sizes, references and other technical specifications contained in this catalogue at anytime. The colors shown of tiles in this catalogue are purely illustrative and limited to printing process. Please refer actual sample before final selection. The details of sizes, colors, references should be verified for typographical errors. All complaints need to be reported within 10 days of purchase. Always follow instructions to avoid complaint due to bad masonry.

Technical Specification

Fresco Rizon Collection | 200x200mm

CHARACTERISTICS	VERDICT	Requirement as per IS 15622:2017 Gr Bla E ≤ 0.08%	AGL Value	Test Method
<b>(A) DIMENSION &amp; SURFACE QUALITY</b>				
Deviation In Length & Width	PASSED	± 0.1%	± 0.1%	IS 13630 Part-1
Deviation In Thickness	PASSED	± 5.0%	± 3.0%	
Straightness of Edge	PASSED	± 0.1%	± 0.1%	
Rectangularity	PASSED	± 0.1%	± 0.1%	
Surface Flatness	PASSED	± 0.5%	± 0.20%	
Surface Quality	PASSED	Min 95% free from visible defects	> 95% free from visible defects	
<b>(B) PHYSICAL &amp; THERMAL PROPERTIES</b>				
Water Absorption % By Wt.	PASSED	0.08 <E ≤ 3%	< 3.0%	IS 13630 Part-2
Flexural Strength (MOR) In N/mm <sup>2</sup>	PASSED	Avr.30 N/MM <sup>2</sup> Ind 27 N/MM <sup>2</sup>	>27N/MM <sup>2</sup>	IS 13630 Part-6
Breaking Strength in N	PASSED	Min 1100 N	>1200 N	IS 13630 Part-6
Bulk Density (gm/cc)	PASSED	Min. 2.0	>2.0	IS 13630 Part-2
Impact Resistance	PASSED	0.55 Min	0.55	IS 13630 Part-14
Resistance to Surface Abrasion	PASSED	Class II Min.	Class III Min.	IS 13630 Part-7
Thermal Shock Resistance	PASSED	10 Cycles Min.	Passed 10 Cycles	IS 13630 Part-5
Moisture Expansion in mm/M	PASSED	0.02MM/M	Nil	IS 13630 Part-3
Crazing Resistance	PASSED	4 Cycles at 7.5 bar Min.	Passed The Test	IS 13630 Part-9
Frost Resistance	PASSED	Resistance	Resistance	IS 13630 Part-10
Moh'S Scratch Hardness	PASSED	Min. 5	Min. 5	IS 13630 Part-13
<b>(C) CHEMICAL PROPERTIES</b>				
Resistance To House hold Chemicals	PASSED	Min. Class AA	Class AA	IS 13630 Part-8
Resistance To Acids & Alkalis (Except HF Acid)	PASSED	Min. Class AA	Class AA	IS 13630 Part-8
Stain Resistance	PASSED	Min. Class 1	Class - 1	IS 13630 Part-8

Technical Specification

ART Collection | 200x200mm

CHARACTERISTICS	VERDICT	Requirement as per IS 15622:2017 Gr Bla E ≤ 0.08%	AGL Value	Test Method
<b>(A) DIMENSION &amp; SURFACE QUALITY</b>				
Deviation In Length & Width	PASSED	± 0.1%	± 0.1%	IS 13630 Part-1
Deviation In Thickness	PASSED	± 5.0%	± 3.0%	
Straightness of Edge	PASSED	± 0.1%	± 0.1%	
Rectangularity	PASSED	± 0.1%	± 0.1%	
Surface Flatness	PASSED	± 0.5%	± 0.20%	
Surface Quality	PASSED	Min 95% free from visible defects	> 95% free from visible defects	
<b>(B) PHYSICAL &amp; THERMAL PROPERTIES</b>				
Water Absorption % By Wt.	PASSED	0.08 <E ≤ 3%	< 3.0%	IS 13630 Part-2
Flexural Strength (MOR) In N/mm <sup>2</sup>	PASSED	Avr.30 N/MM <sup>2</sup> Ind 27 N/MM <sup>2</sup>	>27N/MM <sup>2</sup>	IS 13630 Part-6
Breaking Strength in N	PASSED	Min 1100 N	>1200 N	IS 13630 Part-6
Bulk Density (gm/cc)	PASSED	Min. 2.0	>2.0	IS 13630 Part-2
Impact Resistance	PASSED	0.55 Min	0.55	IS 13630 Part-14
Resistance to Surface Abrasion	PASSED	Class II Min.	Class III Min.	IS 13630 Part-7
Thermal Shock Resistance	PASSED	10 Cycles Min.	Passed 10 Cycles	IS 13630 Part-5
Moisture Expansion in mm/M	PASSED	0.02MM/M	Nil	IS 13630 Part-3
Crazing Resistance	PASSED	4 Cycles at 7.5 bar Min.	Passed The Test	IS 13630 Part-9
Frost Resistance	PASSED	Resistance	Resistance	IS 13630 Part-10
Moh'S Scratch Hardness	PASSED	Min. 5	Min. 5	IS 13630 Part-13
<b>(C) CHEMICAL PROPERTIES</b>				
Resistance To House hold Chemicals	PASSED	Min. Class AA	Class AA	IS 13630 Part-8
Resistance To Acids & Alkalis (Except HF Acid)	PASSED	Min. Class AA	Class AA	IS 13630 Part-8
Stain Resistance	PASSED	Min. Class 1	Class - 1	IS 13630 Part-8

Technical Specification

SUBWAY Collection

CHARACTERISTICS	VERDICT	Requirement as per IS 15622:2017 Gr Bla E ≤ 0.08%	AGL Value	Test Method
<b>(A) DIMENSION &amp; SURFACE QUALITY</b>				
Deviation In Length & Width	PASSED	± 0.4%	± 0.1%	IS 13630 Part-1
Deviation In Thickness	PASSED	± 5.0%	± 3.0%	
Straightness of Edge	PASSED	± 0.20%	± 0.15%	
Rectangularity	PASSED	± 0.30%	± 0.15%	
Surface Flatness	PASSED	± 0.3%	± 0.4%	
Surface Quality	PASSED	Min 95% free from visible defects	> 95% free from visible defects	
<b>(B) PHYSICAL &amp; THERMAL PROPERTIES</b>				
Water Absorption % By Wt.	PASSED	> 10%	14-20%	IS 13630 Part-2
Flexural Strength (MOR) In N/mm <sup>2</sup>	PASSED	Avr. 15N/mm <sup>2</sup>	> 15N/mm <sup>2</sup>	IS 13630 Part-6
Breaking Strength in N	PASSED	Min 200N	> 250N	IS 13630 Part-6
Impact Resistance	PASSED	0.55 Min	0.58	IS 13630 Part-14
Thermal Shock Resistance	PASSED	10 Cycles Min.	Passed 10 Cycles	IS 13630 Part-5
Moisture Expansion in mm/M	PASSED	0.04MM/M Max	0.02MM/M Max	IS 13630 Part-3
Crazing Resistance	PASSED	4 Cycles at 7.5 bar Min.	Passed The Test	IS 13630 Part-9
Frost Resistance	PASSED	Resistance	Resistance	IS 13630 Part-10
Moh'S Scratch Hardness	PASSED	Min. 3	Min. 3	IS 13630 Part-13
<b>(C) CHEMICAL PROPERTIES</b>				
Resistance To House hold Chemicals	PASSED	Min. Class AA	Class AA	IS 13630 Part-8
Resistance To Acids & Alkalis (Except HF Acid)	PASSED	Min. Class AA	Class AA	IS 13630 Part-8
Stain Resistance	PASSED	Min. Class 1	Resistance	IS 13630 Part-8

Technical Specification

MOSAIC Collection

CHARACTERISTICS	VERDICT	Requirement as per IS 15622:2017 Gr Bla E ≤ 0.08%	AGL Value	Test Method
<b>(A) DIMENSION &amp; SURFACE QUALITY</b>				
Deviation In Length & Width	PASSED	± 0.1%	± 0.1%	IS 13630 Part-1
Deviation In Thickness	PASSED	± 5.0%	± 3.0%	
Straightness of Edge	PASSED	± 0.1%	± 0.1%	
Rectangularity	PASSED	± 0.1%	± 0.1%	
Surface Flatness	PASSED	± 0.3%	± 0.4%	
Surface Quality	PASSED	Min 95% free from visible defects	> 95% free from visible defects	
<b>(B) PHYSICAL &amp; THERMAL PROPERTIES</b>				
Water Absorption % By Wt.	PASSED	0.08 <E ≤ 3%	< 3.0%	IS 13630 Part-2
Flexural Strength (MOR) In N/mm <sup>2</sup>	PASSED	Avr.30.0 N/MM <sup>2</sup> Ind 27 N/MM <sup>2</sup>	>27N/MM <sup>2</sup>	IS 13630 Part-6
Breaking Strength in N	PASSED	Min 1100 N	>1200 N	IS 13630 Part-6
Bulk Density (gm/cc)	PASSED	Min. 2.0	>2.0	IS 13630 Part-2
Impact Resistance	PASSED	0.55 Min	>0.55	IS 13630 Part-14
Resistance to Surface Abrasion	PASSED	Class II Min.	Class III Min.	IS 13630 Part-7
Thermal Shock Resistance	PASSED	10 Cycles Min.	Passed 10 Cycles	IS 13630 Part-5
Moisture Expansion in mm/M	PASSED	0.02MM/M	Nil	IS 13630 Part-3
Crazing Resistance	PASSED	4 Cycles at 7.5 bar Min.	Passed The Test	IS 13630 Part-9
Frost Resistance	PASSED	Resistance	Resistance	IS 13630 Part-10
Moh'S Scratch Hardness	PASSED	Min. 5	Min. 5	IS 13630 Part-13
<b>(C) CHEMICAL PROPERTIES</b>				
Resistance To House hold Chemicals	PASSED	Min. Class AA	Class AA	IS 13630 Part-8
Resistance To Acids & Alkalis (Except HF Acid)	PASSED	Min. Class AA	Class AA	IS 13630 Part-8
Stain Resistance	PASSED	Min. Class 1	Class 1	IS 13630 Part-8

# FRESCO

PATTERN	SIZE (mm)	SQ. FT.	CHIP SIZE	WEIGHT (KG.)	PACKING/BOX
HEXAGON	255x295	16.19	23x25mm	16	20pcs
LANTERN	260x265	14.83	42x75mm	17	20pcs
ARABESQUE	260x265	14.83	57x62mm	17	20pcs
HERRINGBONE	275x282	12.52	12x48mm	20	15pcs
HEXAGON	277x322	19.20	51x59mm	23	20pcs
STACKBONE	285x295	13.57	12x93mm	20	15pcs
FISHSCALE	292x292	18.35	23x94mm	22	20pcs
OCTAGON	295x295	18.73	23x23 / 55x55mm	22	20pcs
BRICKBONE	300x290	18.73	45x145mm	21	20pcs
POOL	298x298	19.11	73x73mm	24	20pcs
POOL	300x300	19.38	23x23mm	21	20pcs
POOL	303x303	19.76	48x48mm	23	20pcs
SQUARE	303x303	19.76	48x48mm	23	20pcs
PENNY ROUNDS	313x292	19.67	19mm	19	20pcs
SHALLOW	65x260	12.00	Subway	14	66pcs
CLODY	75x300	10.65	Subway	14	44pcs
EMBOSS	75x300	10.65	Subway	14	44pcs
FLUTE	75x300	10.65	Subway	14	44pcs
DESIGNER VT	300x300	9.68	Fresco	18	10pcs
DESIGNER VT	600x600	15.50	Fresco	28	4pcs
PLAIN	100x200	10.76	Subway	12.05	50pcs
PLAIN	115x240	9.50	Subway	15.60	32pcs

### Packing Specification

### Art Collection

Size (mm)	Thickness (mm)	No. of Tiles / Set	Area Sq. mtr./ Sq. ft. Per Box
200x200mm	8.5 mm	18 pcs.	0.72 m <sup>2</sup> / 7.75 Sq. ft.

### Packing Specification

### Subway Collection

Size (mm)	Thickness (mm)	No. of Tiles / Set	Area Sq. mtr./ Sq. ft. Per Box
100x200mm	8.5 mm	50 pcs.	1 m <sup>2</sup> / 19.20 Sq. ft.
65x260mm	8.5 mm	66 pcs.	1.12 m <sup>2</sup> / 13.57 Sq. ft.
75x300mm	8.5 mm	44 pcs.	0.99 m <sup>2</sup> / 18.36 Sq. ft.

DISCLAIMER: Asian Granito India Ltd. reserves the right to delete & amend either totally or partially, any of the colors, shapes, sizes, references and other technical specifications contained in this catalogue at anytime. The colors shown of tiles in this catalogue are purely illustrative and limited to printing process. Please refer actual sample before final selection. The details of sizes, colors, references should be verified for typographical errors. All complaints need to be reported within 10 days of purchase. Always follow instructions to avoid complaint due to bad masonry.

## Where Surface MEETS RESPONSIBILITY



Asian Granito India Limited Achieves **GreenPro** Certification from CII, Reinforcing Its Position in Green Building Materials

- GreenPro Certification covers AGL's key product categories including **Wall Tiles, Porcelain Body Tiles, Full Body Vitrified Tiles, Glazed Vitrified Tiles, Dual Sink-double Digital Tiles, Double Charged Vitrified Tiles and Soluble Salt Tiles**
- Recognition underscores AGL's focus on environmentally responsible manufacturing and sustainable standards
- Supports the growing demand for certified green materials in India's construction sector

GreenPro certification, developed by the Confederation of Indian Industry, is one of India's most trusted eco-labels, recognising products that meet stringent environmental and sustainability standards across their life cycle. This certification reinforces AGL's long-standing commitment to responsible growth, supported by ISO 14001-certified manufacturing practices, collaboration with green building councils like IGBC, and continuous investment in energy efficiency, water conservation, and waste reduction. Receiving the GreenPro certification strengthens AGL's role in promoting sustainable construction, aligns with global ESG priorities, and supports the construction industry's growing preference for certified green materials in both commercial and residential projects.



SCAN CODE TO DOWNLOAD CERTIFICATE

# CORPORATE OFFICE & BRANCHES

## DISPLAY CENTRE & OFFICE

### GUJARAT

#### Display Centre - Ahmedabad

##### AGL Luxury Tile Arcade

S.G. Highway, Nr. Gota Cross Road,  
Beside Gota over bridge, Ahmedabad - 382481.

Mobile: 98258 03713 / 99099 29920

E-mail: asianworld.amd@aglasiangranito.com

#### AGL Export House - Morbi

Ch-5, Eden Ceramic City,  
Opp.Honest Hotel, National Highway,  
Lalpar Road, Morbi - 363642.

Mobile: 99799 90591

E-mail: exportmorbi@aglasiangranito.com

#### AGL Showroom

##### Future Ceramic Private Limited

Nr. Adicon Ceramica Tiles Pvt, Survey No. 84P1,  
84P2, 85/1, 85/2P1, 85/2P2, B/h Harikrupa  
Papers LLP, 8-A NH, At Post Gala, Morbi - 363642.

Mobile: 93166 32661

E-mail: display@futureceramic.co.in

#### Factory Display Centre - Morbi

##### (Sanitaryware & Faucets)

##### AGL Sanitaryware Pvt. Ltd.

Survey No. 153 P1, 153 P2, 154 P2, 8A National  
Highway, B/h. Bahadurgadh Bus Stand,  
At. Bahadurgadh, Morbi - 363642.

Mobile: 93166 32908

E-mail: export34@aglasiangranito.com

### MAHARASHTRA

#### AGL Display Centre - Mumbai

A- 402, Citi Point, Nr. kohinoor Hotel,  
Opp. ICICI Bank, J.B. Nagar,  
Chakala Metro Station, Andheri (East),  
Mumbai - 400 059. Mobile: 93214 95229  
E-mail: mumbaishowroom@aglasiangranito.com

#### AGL Display Centre - Mumbai

##### (Marblex & Grestek)

Gala Impecca, Gr. Floor, Mathuradas Vasanji Rd,  
Next to Courtyard Marriott, J. B. Nagar,  
Kurla - Andheri Road, Andheri (East) - 400059.  
Mobile : 76000 98595

#### AGL Display Centre - Pune

Capital Square, 1st & 2nd floor, Plot No. 5,  
Opp. Kataria High School, Industrial Estate,  
Mukund Nagar, Pune - 411037.  
Mobile : 93717 65505

### TELANGANA

#### AGL Display Centre - Hyderabad

202 2<sup>nd</sup> Floor & 302 3<sup>rd</sup> Floor, Kurve Elite,  
Plot No. 58, Phase-1, Kamala Puri Colony Main Rd,  
Opp. Krishe Meadows, Hyderabad - 500073.

Mobile: 99099 90434, 96420 11146

E-mail: hydshowroom1@aglasiangranito.com,  
hydshowroom@aglasiangranito.com

### TAMILNADU

#### AGL Display Centre - Chennai

Bascon Futura SV IT Park, 2nd Floor, 56-L,  
Venkatanarayana Rd, Parthasarathi Puram,  
T. Nagar, Chennai - 600017.

Mobile: 98408 47193

### KARNATAKA

#### AGL Display Centre - Bangalore

##### Asian Granito India Ltd., Region Office

No. 37/17, 31/18, Brahmananda Court, Opp.  
R Kannada News Channel, S.R. Nagar,  
Lalbagh main road, Bangalore - 560027.

Mobile: 81605 21204

E-mail: bangloreshowroom@aglasiangranito.com

### KERALA

#### AGL Display Centre - Kochi

No.51/2910 D2 Adjacent To Bread World,  
Thykoodam Bridge Service Road,  
Vytila, Kochi - 682019.

Mobile: 78618 09641

E-mail: cochinshowroom@aglasiangranito.com

### WEST BENGAL

#### AGL Display Centre - Kolkata

5th Floor, Office No. 5A, PS SOLARIS Building,  
113/H, Opp. Flaming Hospital. Matheswartala Rd.  
Topsia, Kolkata - 700046.

Mobile: 85840 65565

E-mail: kolkattashowroom@aglasiangranito.com

### UTTAR PRADESH

#### AGL Display Centre - Noida

F-15, Ground Floor, Sector 8,  
Gautam Buddha Nagar,  
Noida - 201301.

Mobile: 85111 30500

E-mail: noidashowroom@aglasiangranito.com

## OFFICE

### GUJARAT

#### Corp. Office - Ahmedabad

##### ASIAN GRANITO INDIA LTD.

202, Dev Arc, Opp. Iskcon Temple,  
S. G. Highway, Ahmedabad - 380 015.

Phone: +91 79 66125500/698

Toll Free: 1800 123 3455

E-mail: info@aglasiangranito.com

#### AGL Office - Morbi

B - 26, Parshwanath Complex-1  
Opp. kuber Cinema, 8-A National Highway,  
Lalpar Road, Morbi - 363642.

Mobile: 9825802077

E-mail: aglmorbi@aglasiangranito.com

### RAJASTHAN

#### AGL Office - Jaipur

Lower Ground, D-5, Vaishali Nagar,  
Jaipur - 302021.

Mobile: 70734 84069

### MADHYA PRADESH

#### AGL Office - Indore

3rd Floor, Plot No 101, WB Scheme No. 94,  
Sector - B, Opp. HDFC Bank,  
Nr. Bombay Hospital, Indore - 452010.

Mobile: 99092 62533 / 73140 06670

E-mail: acctsindore@aglasiangranito.com

### TAMIL NADU

#### AGL Office - Trichy

Mark Diamond Residency, No-36,  
V O C Road, Cantonment, Trichy - 620001.

Mobile: 99406 00262

### PUNJAB

#### AGL Office - Chandigarh

CCC Chandigarh City Centre, Block A  
3rd Floor, Soho 325, Vip Road, Near Metro  
Zirakpur, Chandigarh - 140603.

Mobile : 93163 13880, 99882 22471





## Asian Granito India Ltd.

Regd. & Corp. Office  
202, Dev Arc, Opp. Iskcon Temple, S.G. Highway,  
Ahmedabad - 380 015, Gujarat, INDIA

Phone: +91 79 66125500/698 | CIN: L17110GJ1995PLC027025

E-mail : [info@aglasiangranito.com](mailto:info@aglasiangranito.com) | Web : [www.aglasiangranito.com](http://www.aglasiangranito.com)

Follow Us:      **1800 123 3455**  
Toll-free: Mon-Sat 10am-6pm

### ONE SCAN AWAY TO EXPLORE MORE ABOUT US



SCAN CODE TO  
DOWNLOAD  
AGL TILES APP



SCAN CODE TO  
DOWNLOAD  
CATALOGUE



SCAN TO FIND  
EXCLUSIVE  
STORE