



Asian Granito India Ltd.

Regd. & Corp. Office

202, Dev Arc, Opp. Iskcon Temple, S.G. Highway,
Ahmedabad - 380 015, Gujarat, INDIA.

Phone: +91 79 66125500/698 | Fax: +91 79 66125600/66058672

CIN: L17110GJ1995PLC027025

E-mail: infomarble@aglasiangranito.com | Web: www.aglasiangranito.com



1800 123 3455
Toll-free: Mon-Sat 10am-6pm

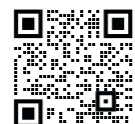
ONE SCAN AWAY TO EXPLORE MORE ABOUT US



SCAN CODE FOR 360° TOUR



SCAN CODE TO DOWNLOAD AGL TILES APP



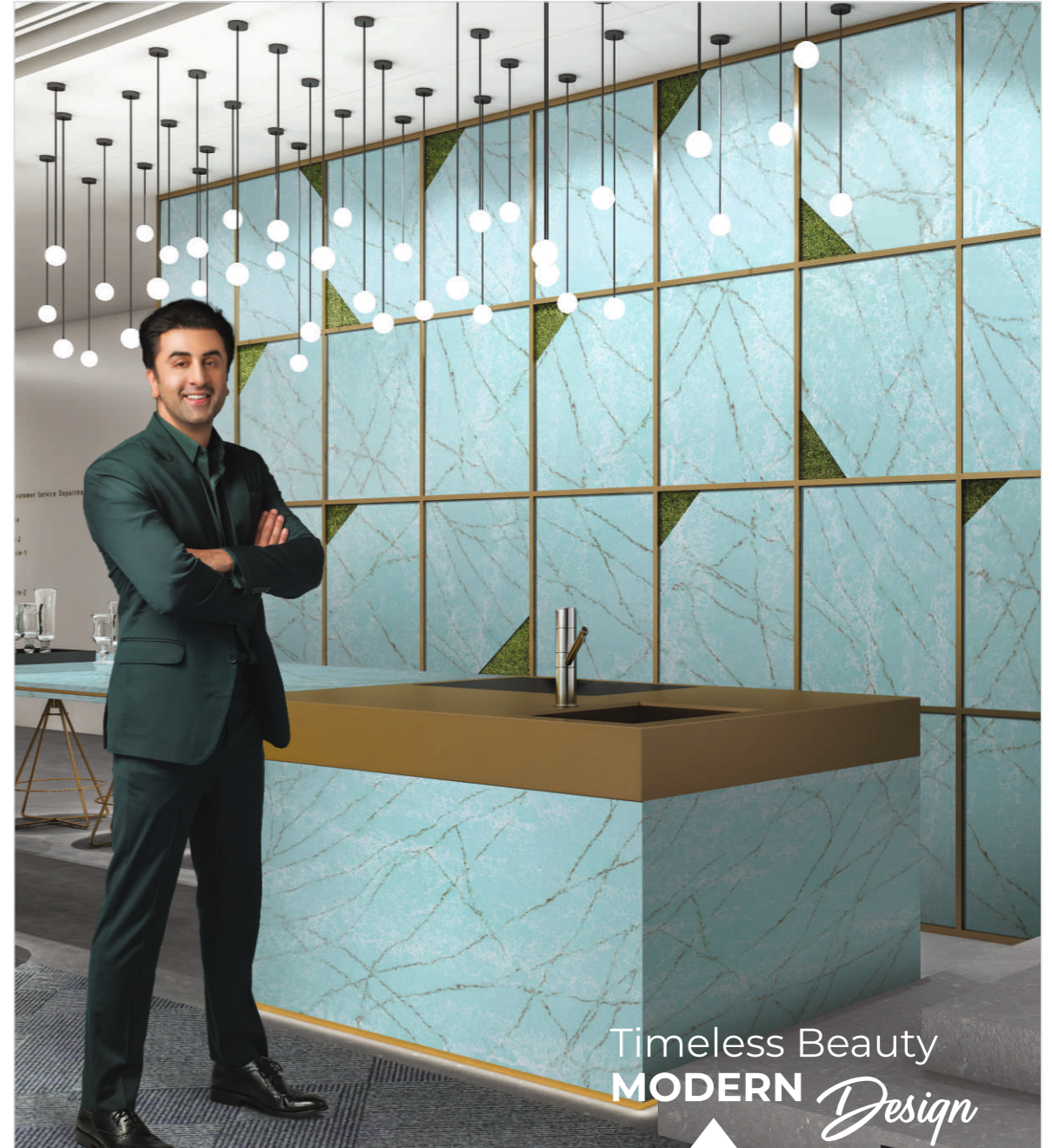
SCAN CODE TO DOWNLOAD CATALOGUE



SCAN TO FIND EXCLUSIVE STORE



Premium ka Pappa



ENGINEERED MARBLE & QUARTZ

Marble: 3025x1225mm | Quartz: 3100x1400mm

ABOUT US

At AGL, we have been leading the change by continuous innovation, setting higher goals, achieving the unthinkable and creating new benchmarks. This has enabled us to clock net consolidated turnover of ₹1663 Crores (US \$200 Million) in FY23-24, making us giant in the space décor industry. In the short span of 24 years, we are one of India's largest groups, with a global footprint across 100 countries.

Today, AGL has enhance its product range from Tile to Marble, Quartz and now in Bathware as well.

The research and development center at every AGL plant is well equipped with all the latest testing methods and the products are thoroughly tested for quality before delivery. It is ensured that every product matches the highest international quality standards.



14 ULTRA-MODERN MANUFACTURING UNITS IN INDIA*

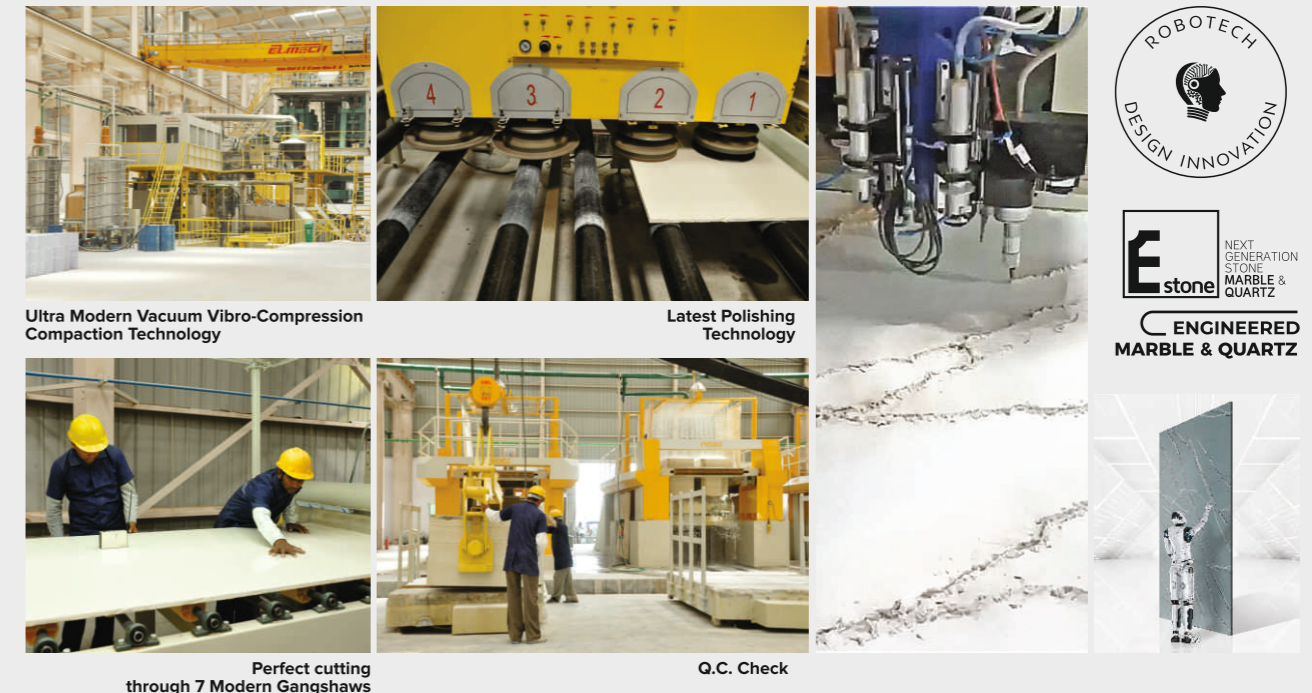
* Including JVs and CMUs
** Includes contract labour

| | | | | |
|--|--|---|--|--------------------------------|
| Global presence in over 100 Countries | NO.1 Exporter among listed ceramic companies of india | One of the TOP 4 Listed Ceramic tiles companies in india | 54.5 Million sq.mtrs Production Capacity per Annum* | 14 Manufacturing Units* |
| 400+ Field Forces | 4000+ Designs | 30+ Different sizes | 277 Exclusive Showrooms Pan India | 13 Display centres |
| 18000+ Touch point | 750+ Efficient Dealers and Distributors | * Including Jvs and CMUs | | |

TECHNOLOGY AND SETUP

Ultra Modern Technology To Produce Engineered Marble & Quartz In India

AGL Marble & Quartz Plant is fully equipped with Avant Garde ultra modern Vibrocompression compaction technology. This plant produce consisten products with great quality that matches international standards and remains durable for long term. AGL Marble & Quartz is polished with 64 head advance polishing technology that enhances natural beauty of engineered marble & quartz surface with full of shine and ready to install.



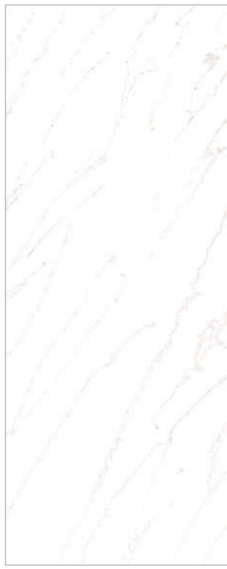
AGL brings to you an exclusive collection of engineered marble and quartz. These next-generation marble and quartz are sustainable and eco-conscious for a better tomorrow. The collection is feature-rich and maintenance free offering a nature stone-like ambiance with less care and maintenance. Robotech - Design Innovation is a revolution in the industry, bringing tech and craftsmanship for products unparalleled in features, technical attributes, application, and efficiency.



ULTRAMODERN R&D AND QC LAB

At, AGL, each plants has well established research and development laboratory fully equipped with latest testing equipments to maintain quality standards. AGL R&D laboratory has well experience team of professionals who regularly check to get best level of quality from material procurement to finish goods, thus since inception, AGL has been continuously performing to give sheer satisfaction to its customer with trendy designs.

HI-TECH COLLECTION



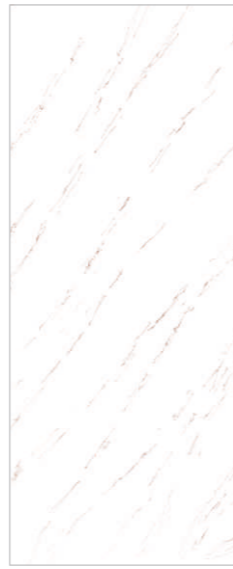
WONDER



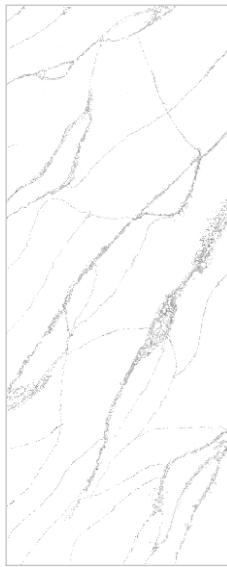
COSMIC WHITE



DIVINE GOLD



PLATO



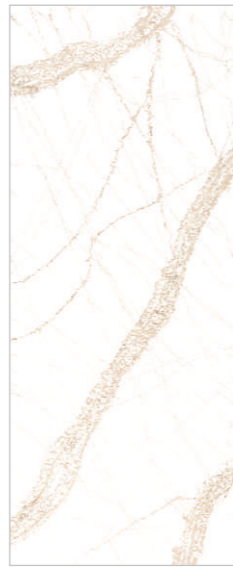
SNOW VALLEY



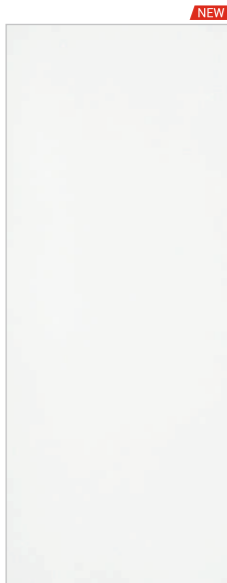
GALACTIC



FOREST GREY



FOREST GOLD



SNOW STORM



OYSTER GREEN



AQUA GREEN



AQUAMARINE

CALACATTA COLLECTION



BRECCIA CARARA



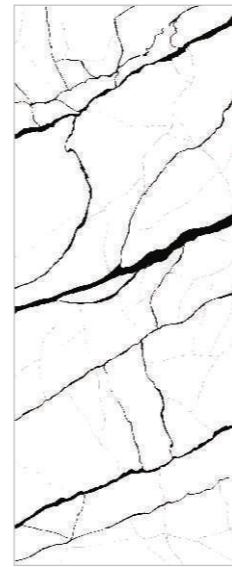
OCEAN WHITE



NOBLE GRIGIO



FLORENCE



LEON



QUARTZ
3100x1400mm

CRYSTAL SERIES



BIANCO MAPLE



GREY MAPLE



GRES



ROYAL GRIGIO



PICASSO



GRAPHITE



COASTA MAPLE



ESSEL BROWN



BURGUNDY MAPLE



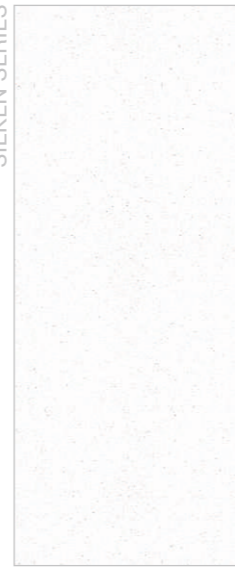
TOSCO FIERO



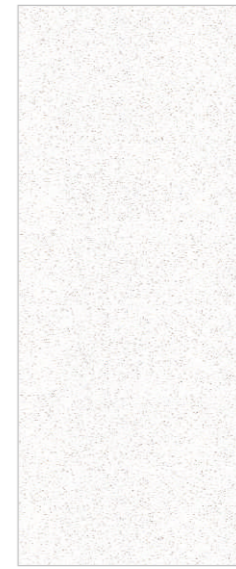
GALAXY

AVAILABLE THICKNESS
15mm | 20mm

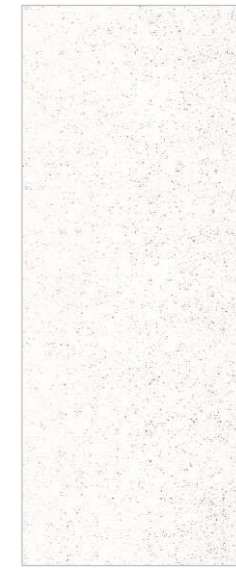
SILKEN SERIES



BIANCO PINTA



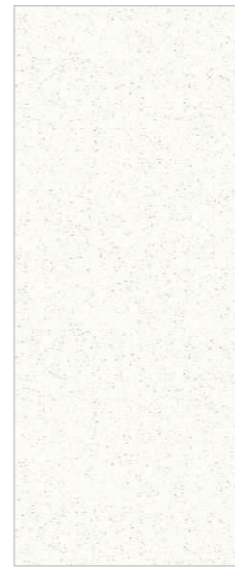
AVALANCHE



VANILLA



WINTER WHITE



BIANCO DESERT



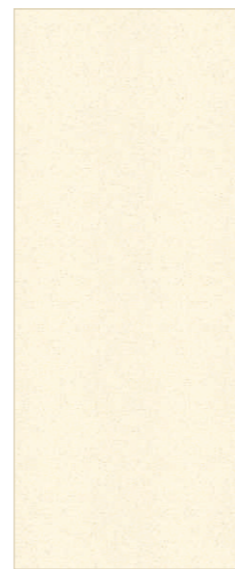
ANTHRACITE



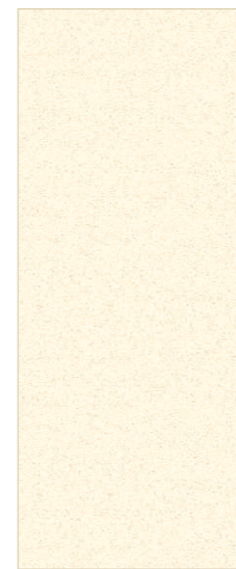
ROYAL STAR



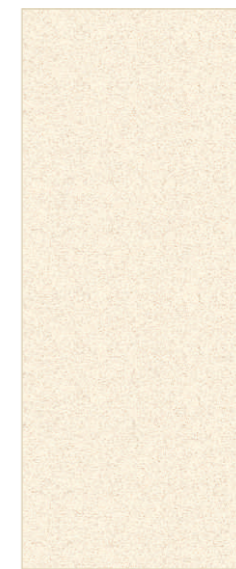
MUDPAI



TITON BEIGE



WICKER



COASTA IVORY



COASTA BEIGE

SILKEN SERIES



TITON BRISTOL



GINGER TAN



TITON BROWN



SUPER WHITE

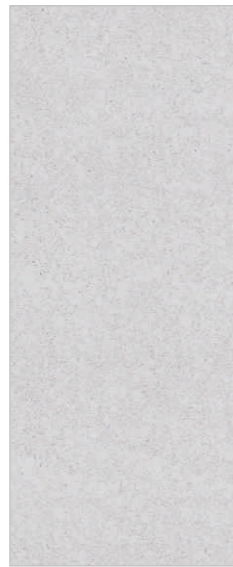
EMERALD SERIES



ARCTIC WHITE



CIEL CARARA



AFYON GREY



SANDAL



ARCTIC BREEZE



ANCIENT BEIGE



ALMOND

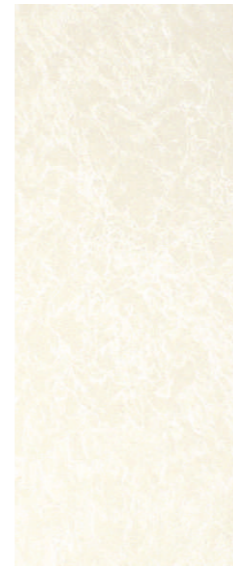


COSMOPOLITAN

SPECTRA SERIES



MARINA GREY



COSMUS



VENUS



ROYAL DREAM



SWISS SERIES



SATUVARIO



BIANCO SICILIA



SHAMPHER WHITE



SHADOW GREY



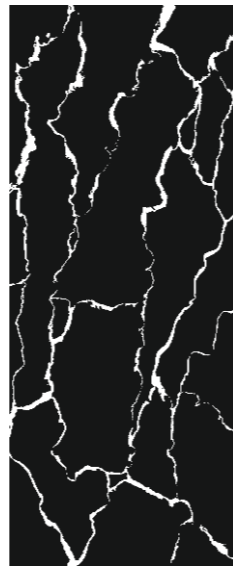
CLOUDY GREY



PLATINUM GREY

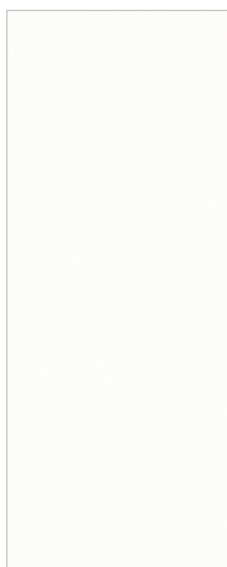


PHANTOM



PLATINUM BLACK

ELEGANT SERIES



OASIS



SHITAKE



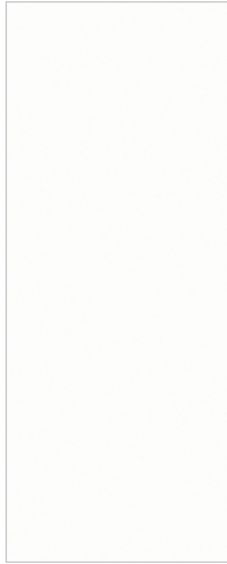
CEMENT



EMPERADORE



MARIDIAN SERIES



ANTIQUE WHITE



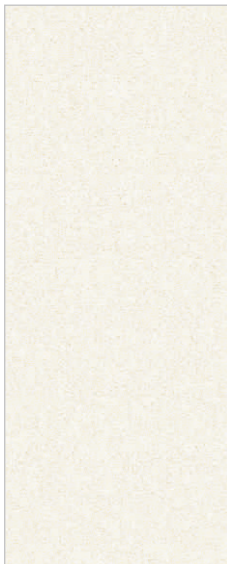
OCEAN GREY



STEEL GREY



MARMO GRES



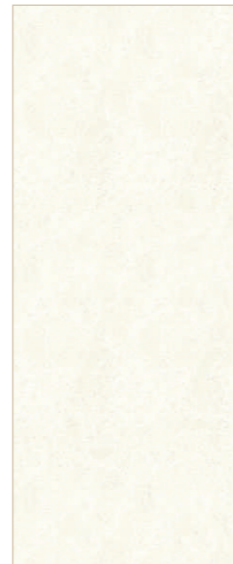
RIGEL BEIGE



TIGRETO BROWN

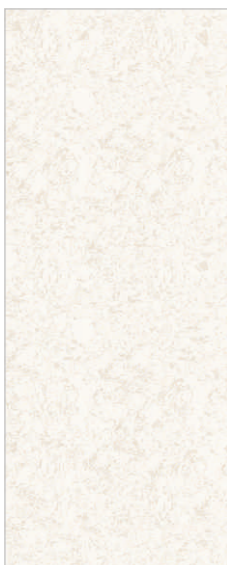


SWISS CARARA

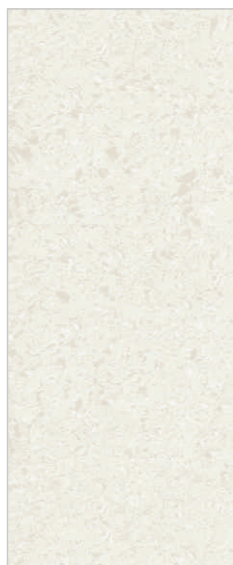


ASTONE BEIGE

MARIDIAN SERIES



ULTIMA BEIGE



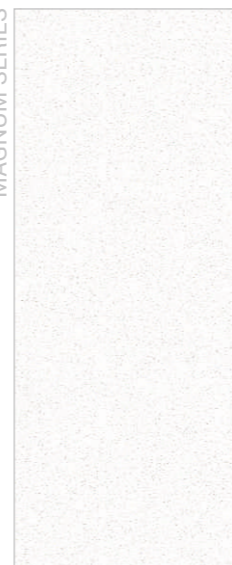
HONEY BRINJAL



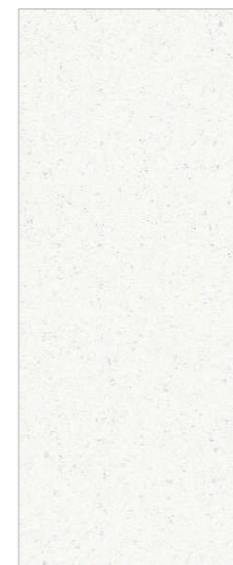
CAPUCHINO



MAGNUM SERIES



GARDENIA



CARARA

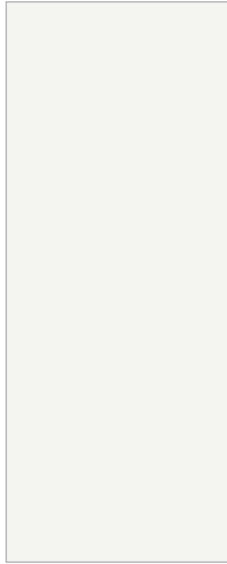


GIOTTO



ATLANTA

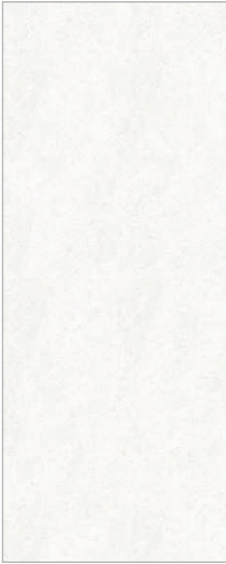
CRYSTAL WHITE SERIES



PEARL WHITE



EMPYREAN SERIES



AMAZONA



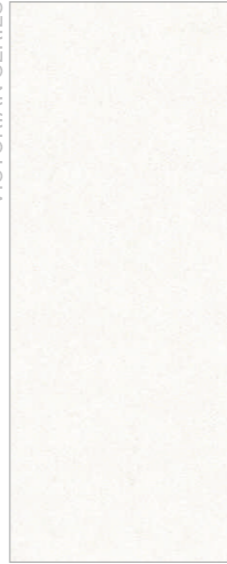
EUROPEAN SERIES



GLACIER EPITOMA



VICTORIAN SERIES



AMELIA



CAMELIA



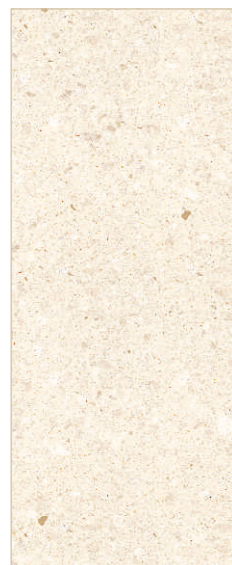
FANTASY GREY



MINTA



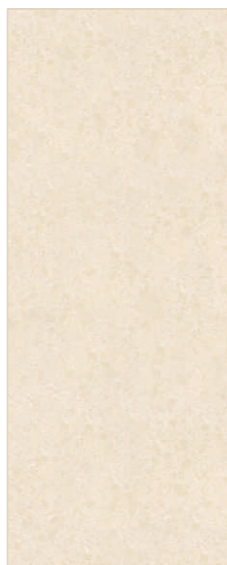
DANTIA



PERLATO



TRAVENTINO



ARIZONA



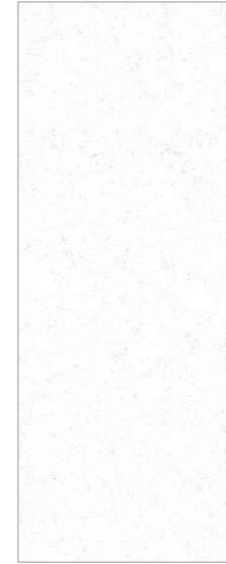
FRENCH BROWN



EMPYREAN WHITE SERIES



ULTRA WHITE



ALPS WHITE



MONTAZA SERIES



BIANCO DINAMITE



TERIA



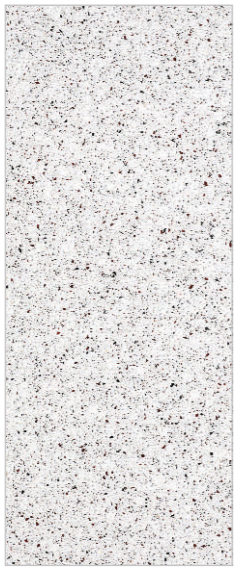
SONATA GREY



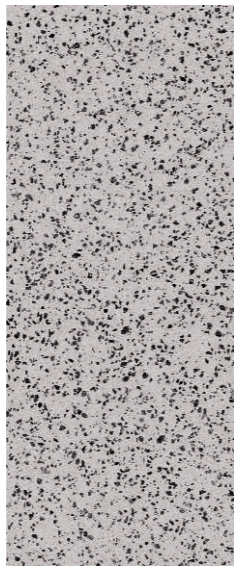
ARNICO



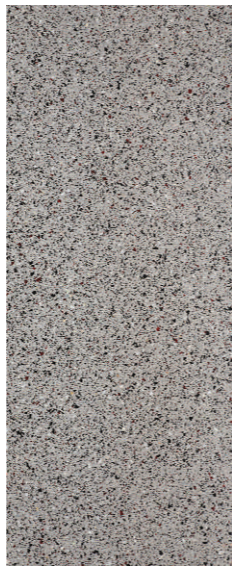
AMEDUS



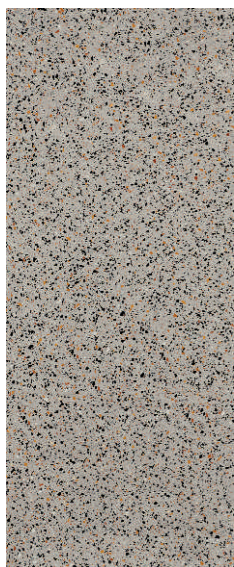
BIANCO LASA



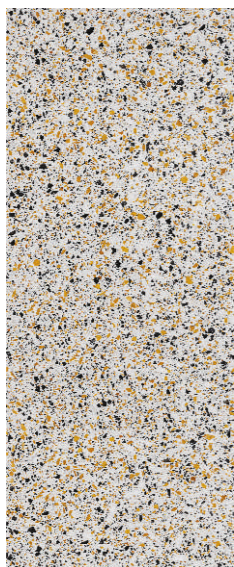
FLURRY



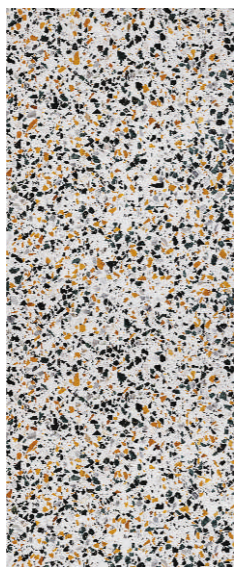
ORBICO



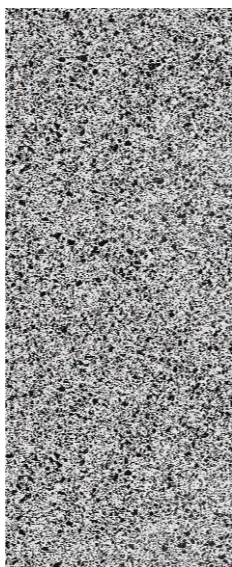
TUNDRA GREY



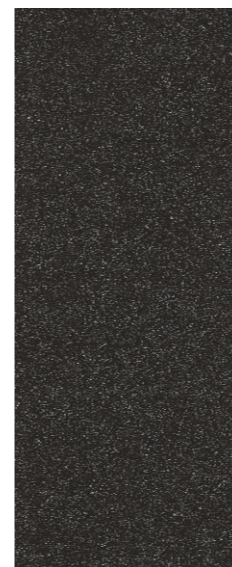
JAGUAR



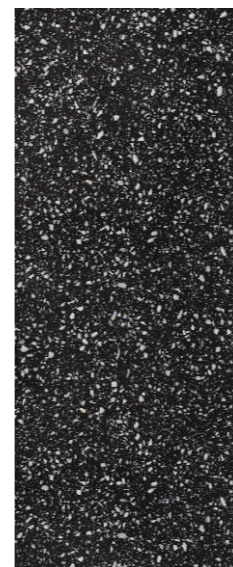
ROYAL STONE



BLACK ROSE



COIN BLACK



ICED FLOWER

TECHNICAL SPECIFICATION



AGL ENGINEERED MARBLE (CALCAREOUS BASE)

| TEST SPECIFICATION | STANDARD OF TEST | STANDARD OF MEASUREMENT | RANGE OF AGL MARBLE STONE | |
|--|------------------|-------------------------|---------------------------|-------------|
| | | | BOULDER SERIES | FINE SERIES |
| Water Absorption | EN 14617 - 1 | % | <0.2 | <0.2 |
| Thermal Expansion linear coefficient of T.E. | EN 14617 - 11 | 10 ⁻⁶ / °c | <15 | <15 |
| Surface Hardness | EN 101 | Moh's Scale | 3 - 4 | 3 - 4 |
| Density | 14617 - 1 | gm / cc | >2.45 | >2.40 |
| Compressive Strength | 14617 - 15 | Mpa | >100 | >100 |
| Flexural Strength / Modulus of rupture | 14617 - 2 | Mpa | 10 - 20 | 20 - 35 |
| Glossiness | Reflection | % | >70 | >70 |
| Chemical Resistance (Resistance to acid) | 14617 - 10 | C1.C4 | C1.C4 | C1.C4 |
| Abrasion Resistance | EN 14617- 4 | mm | 25-40 | 25-40 |

AGL QUARTZ (SILICEOUS BASE)

| TEST SPECIFICATION | STANDARD OF TEST | STANDARD OF MEASUREMENT | RANGE OF AGL QUARTZ STONE | |
|--|---------------------|-------------------------|---------------------------|-------------|
| | | | BOULDER SERIES | FINE SERIES |
| Water Absorption | EN 14617 - 1 | % | <0.1 | |
| Thermal Expansion Linear Coefficient Of T.e. | EN 14617 - 11 | 10 ⁻⁶ / °c | <30 | |
| Surface Hardness | EN 101 | Moh's Scale | 6 - 7 | |
| Density | EN 14617 - 1 | gm / cc | >2.30 | |
| Compressive Strength | EN 14617 - 15 | Mpa | 170 - 250 | |
| Flexural Strength / Module | EN 14617 - 2 | Mpa | 27 - 60 | |
| Glossiness | Reflection | % | >55 | |
| Chemical Resistance (Resistance to acid) | EN 14617 - 10 | C1.C4 | C1.C4 | |
| Resistance To Fire | DIN 4102 | | b1 | |
| Shock Resistance | ASTM C848 | | No Scaling | |
| Slippage Resistance | DIN 51130 | Joule | Levigato 320 = R9 | |
| | | | Honed 320 = R9 | |
| | | | Geschliffen 320 = R9 | |
| Resistance To De-Icing Salts | ASTM C672 | | 120 - 180 | |
| Resistance To Rapid Freezing & Thawing | ASTM C666 DIN 52104 | | Levigato 320 = R9 | |
| | | | Honed 320 = R9 | |
| | | | Geschliffen 320 = R9 | |
| Impact Resistance | ASTM C1709 | | 5, + / -2 | |
| Abrasion Resistance | EN 14617- 4 | mm | 172 - 25 | |

PRODUCT FEATURES / COMPARISON BETWEEN NATURAL STONE AND AGL ENGINEERED MARBLE STONE

| FACTORS | MARBLE / NATURAL STONE | AGL MARBLE STONE |
|---------------------------------|------------------------|-------------------------|
| Colour Consistency | No | Yes |
| Porosity | High | Very Low |
| Hardness | Low | High |
| Polishing | On Site Polishing | Ready to Use |
| Cost Of Onsite Polishing | Extra | No Extra Cost |
| Wastages | High | Low |
| Pinholes & Cracks | Filling Required | No Filling Required |
| Uniformity In Quantity Supplied | Constrains Are There | No Constrains Are there |
| Laying & Completion Time | High | Low |
| Maintenance | High | Low |
| Supply Schedule | Non Controllable | As Per Schedule |
| Size Consistency | No | Yes |
| Thickness / Size Option | Not Always Available | Always Available |

Other Features

Resistance to abrasion, shock & flexural strength
Dimensional stability that reduces wastage during installation
Uniformity in colour that makes it suitable for large application
Repolishable

Packing, Size & Thickness Availability Details In Engineered Marble Stone

| Sizes in mm Availability | In Sq.Ft. (Appx.) |
|--------------------------|-------------------|
| 3025 x 1225 mm | 10 x 4 |
| 1500 x 1200 mm | 5 x 4 |
| 1200 x 600 mm | 4 x 2 |
| 600 x 600 mm | 2 x 2 |
| 600 x 300 mm | 2 x 1 |

Customized sizes on bulk requirements

Packing, Size & Thickness Availability Details In Quartz Stone

| Sizes in mm Availability | In Sq.Ft. (Appx.) |
|--------------------------|-------------------|
| 3100 x 1400 mm | 10.2 x 4.6 |

Customized sizes on bulk requirements

Thickness in mm availability

12mm | 15/16mm | 18mm In Engineered Marble Stone
15mm | 20mm In Quartz Stone

Wooden palleting only based on thickness / size.

Customized packing in corrugated boxes in 12mm can also be provided.

Note: Due to printing process, the colour of the actual products may differ from the picture. For true colour matching purposes refer the sample.



Design and technology innovation for superior engineered marble & quartz surfaces.

Signature Series Only Available In 20mm Thickness

CORPORATE OFFICE & BRANCHES

DISPLAY CENTRE

GUJARAT

Display Centre - Ahmedabad

AGL Luxury Tile Arcade
S.G. Highway, Nr. Gota Cross Road,
Beside Gota over bridge, Ahmedabad - 382481.
Mobile: 98258 03713 / 99099 29920
E-mail: asianworld.amd@aglasiangranito.com

AGL Export House - Morbi

Ch-5, Eden Ceramic City,
Opp.Honest Hotel, National Highway,
Lalpar Road Morbi - 363642.
Mobile: 99799 90591
E-mail: exportmorbi@aglasiangranito.com

AGL Showroom

Future Ceramic Private Limited
Servey No.-84P1, 84P2, 85/1, 85/2P1, 85/2P2
B/h Harikrupa Papers LLP,
8-A NH, At Post Gala - Morbi -363642
Mobile: 93166 32661
E-mail: display@futureceramic.co.in

Factory Display Centre - Morbi

(Sanitaryware & Faucets)
AGL Sanitaryware Pvt. Ltd.
Survey No. 153 P1, 153 P2, 154 P2, 8A National
Highway, B/h. Bahadurgadh Bus Stand,
At. Bahadurgadh, Morbi-363642. Gujarat, India.
Mobile: 93166 32908
E-mail: export34@aglasiangranito.com

MAHARASHTRA

AGL Display Centre - Mumbai

A- 402, Citi Point, Nr. kohinoor Hotel,
Opp. ICICI Bank, J.B. Nagar,
Chakala Metro Station, Andheri (East),
Mumbai - 400 059.
Mobile: 93214 95229
E-mail: mumbaishowroom@aglasiangranito.com

AGL Display Centre - Mumbai

(Marblex & Grestek)
Gala Impecca, Gr. Floor, Mathuradas Vasanji Rd,
Next to Caurtyard Marriott, J. B. Nagar,
Kurla-Andheri Road, Andheri (East) - 400059
Mobile : 7600098595

AGL Display Centre - Pune

Capital Square, 1st & 2nd floor, Plot No.5,
Nr. Laxminarayan Sweets, Industrial Estate,
Mukund Nagar, Pune - 411037 Maharashtra.
Mobile : 93717 65505

TELANGANA

AGL Display Centre - Hyderabad

202 2nd Floor & 302 3rd Floor, Kurve Elite,
Plot No. 58, Phase-1, Kamala Puri Colony Main Rd,
Opp. Krishe Medows, Hyderabad-500073
Mobile: 99099 90434, 96420 11146
E-mail: hydshowroom1@aglasiangranito.com,
hydshowroom@aglasiangranito.com

TAMILNADU

AGL Display Centre - Chennai

Bascon Futura SV IT Park, 2nd Floor, 56-L,
Venkatanarayana Rd, Parthasarathi Puram,
T. Nagar, Chennai - 600017, Tamil Nadu
Mobile: 98408 47193

KARNATAKA

AGL Display Centre - Bangalore

Asian Granito India Ltd., Region Office
No. 37/17, 31/18, Brahmananda Court, Opp.
R Kannada News Channel, S.R. Nagar, Lalbagh
main road, Bangalore - 560027. Karnataka
Mobile: 81605 21204
E-mail: bangloreshowroom@aglasiangranito.com

KERALA

AGL Display Centre - Kochi

No.51/2910 D2 Adjacent To Bread World,
Thykooodam Bridge Service Road,
Vyttila Kochi - 682019
Mobile: 78618 09641
E-mail: cochinshowroom@aglasiangranito.com

WEST BENGAL

AGL Display Centre - Kolkata

5th Floor, Office No. 5A, PS SOLARIS Building,
113/H, Opp. Flaming Hospital. Matheswartala Rd.
Topsia. Kolkata 7000046.
Mobile: 85840 65565
E-mail: kolkattashowroom@aglasiangranito.com

UTTAR PRADESH

AGL Display Centre - Noida

F-15, Ground Floor, Sector 8,
Gautam Buddha Nagar,
Noida - 201301 Uttar Pradesh
Mobile: 85111 30500, 98258 03736
E-mail: noidashowroom@aglasiangranito.com

OFFICE

GUJARAT

Corp. Office - Ahmedabad

ASIAN GRANITO INDIA LTD.
202, Dev Arc, Opp. Iskon Temple,
S. G. Highway, Ahmedabad - 380 015
Gujarat (INDIA)
Phone: +91 79 66125500/698
Toll Free: 1800 123 3455
E-mail: info@aglasiangranito.com

AGL Office - Morbi

B - 26, Parshwanath Complex-1
Opp. kuber Cinema, 8-A National Highway,
Lalpar Road, Morbi - 363642.
Mobile: 9825802077
E-mail: aglmorbi@aglasiangranito.com

RAJASTHAN

AGL Office - Jaipur

Lower Ground, D-5, Vaishali Nagar,
Jaipur, Rajasthan - 302021
Mobile: 80085 03660 / 93144 39930

MADHYA PRADESH

AGL Office - Indore

3rd Floor, Plot No 101, WB Scheme No. 94,
Sector - B, Opp. HDFC Bank, Nr. Bombay Hospital,
Indore - MP - 452010
Mobile: 99092 62533 / 73140 06670
E-mail: acctindsore@aglasiangranito.com

TAMIL NADU

AGL Office - Trichy

Mark Diamond Residency, No-36,
V O C Road, cantonment. Trichy - 620001
Mobile: 99406 00262

AGL Office - Coimbatore

No .70, Dr. Alagappa Road, Tatabad.
Coimbatore - 641 012
Mobile: 90161 13976

PUNJAB

AGL Office - Chandigarh

CCC Chandighar City Centre, Block A 3rd Floor,
Soho 325, Vip Road, Near Metro Zirakpur,
Chandigarh Punjab-140603
Mobile : 93163 13880, 99882 22471

